



Highfield Grove, Rock Ferry, Birkenhead, CH42 2DQ

welcome to

Highfield Grove, Rock Ferry Birkenhead

Calling all Investors!

Three Bedroom Mid terrace house with tenant in situ - Great opportunity to add to portfolio or as a first buy to let.

Call us for more details or to arrange a viewing.



Property Description

People don't spend their lives trying to look at what's behind the curtain. They like the curtain. It provides them stability, comfort, and definition - and this three bed mid terraced house does just that!!

The property is situated within close proximity to all local amenities, and comprises of entrance hall, lounge, dining room, kitchen, family bathroom and three bedrooms. Externally there is a yard to the rear. Sold with tenant in Situ.

Entrance Porch

Double glazed door to the front and wooden laminate flooring.

Entrance Hall

Single glazed door to the front, radiator and wooden laminate flooring.

Lounge

11' x 13' 4" (3.35m x 4.06m)

Double glazed bay window to the front, feature gas fireplace and television connection point.

Dining Room

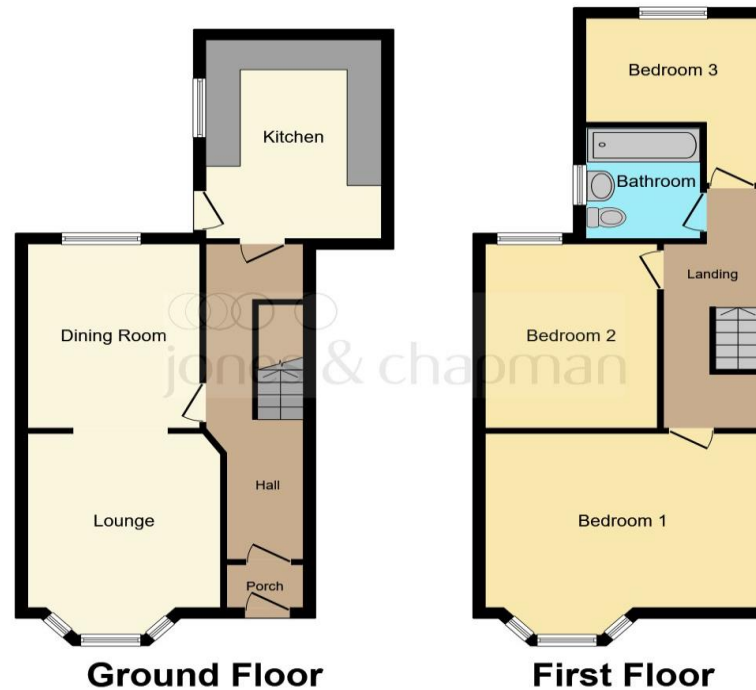
10' x 12' 1" (3.05m x 3.68m)

Double glazed window to the rear, radiator and television connection point.

Kitchen

11' 8" x 13' 2" (3.56m x 4.01m)

Fitted kitchen comprising wall and base cupboards, stainless steel sink and drainer unit with mixer taps and complementary work surfaces. Free standing gas cooker with cooker-hood above and plumbing for a washing machine. Double glazed window to the side and door to the side giving access to the rear.



This floor plan is for illustrative purposes only. It is not drawn to scale. Any measurements, floor areas (including any total floor area), openings and orientation are approximate. No details are guaranteed, they cannot be relied upon for any purpose and they do not form part of any agreement. No liability is taken for any error, omission or misstatement. A party must rely upon its own inspection(s). Powered by www.focalagent.com

First Floor Landing

Bedroom One

15' 7" x 13' 3" (4.75m x 4.04m)

Double glazed bay window to the front.

Bedroom Two

10' 2" x 12' 1" (3.10m x 3.68m)

Double glazed window to the rear and television connection point.

Bedroom Three

10' 2" x 10' 8" (3.10m x 3.25m)

Double glazed window to the rear and built-in cupboard.

Bathroom

Three piece bathroom suite comprising bath with shower over, pedestal wash hand basin and WC. Radiator and double glazed window to the side.

Outside

With front and rear gardens.

Front Garden

With enclosed front yard.

Rear Garden

Concrete yard with rear access to entry.



view this property online jonesandchapman.co.uk/Property/PTN114725



welcome to

Highfield Grove, Rock Ferry Birkenhead

- Three Bedroom Mid Terrace House
- Tenant in Situ
- Lounge
- Kitchen
- Council Tax Band: A

Tenure: Freehold EPC Rating: D

£120,000



Please note the marker reflects the postcode not the actual property

view this property online jonesandchapman.co.uk/Property/PTN114725



Property Ref:
PTN114725 - 0002

1. MONEY LAUNDERING REGULATIONS Intending purchasers will be asked to produce identification documentation at a later stage and we would ask for your co-operation in order that there is no delay in agreeing the sale. 2. These particulars do not constitute part or all of an offer or contract. 3. The measurements indicated are supplied for guidance only and as such must be considered incorrect. Potential buyers are advised to recheck measurements before committing to any expense. 4. We have not tested any apparatus, equipment, fixtures or services and it is in the buyers interest to check the working condition of any appliances. 5. Where an EPC, or a Home Report (Scotland only) is held for this property, it is available for inspection at the branch by appointment. If you require a printed version of a Home Report, you will need to pay a reasonable production charge reflecting printing and other costs. 6. We are not able to offer an opinion either written or verbal on the content of these reports and this must be obtained from your legal representative. 7. Whilst we take care in preparing these reports, a buyer should ensure that his/her legal representative confirms as soon as possible all matters relating to title including the extent and boundaries of the property and other important matters before exchange of contracts.

 jones & chapman



0151 608 2287



Prenton@jonesandchapman.co.uk



349 Woodchurch Road, Prenton, PRENTON,
Merseyside, CH42 8PE



jonesandchapman.co.uk