



Rock Lane East, Birkenhead, CH42 1PG

welcome to

Rock Lane East, Birkenhead

Simply stunning! Tucked away on Rock Lane East in the Rock Park Conservation Area, is this beautifully presented, four double bedroom, family home. Ticking every box for a growing family from the spacious living accommodation to the central location, this is definitely not one to be missed!



Property Description

A driveway leads you up to the front door where a light and airy entrance hall welcomes you in to the property. The two reception rooms lead off the hallway with the front lounge, which is currently being used as an office, offers plenty of space and character. The second reception room doubles up with a dining space and offers access out to the rear courtyard and through to the modern kitchen with a utility corner.

The first floor boasts two excellent size double bedrooms and a stunning family bathroom with a four piece suite. There is also a separate second WC. The second floor also homes two double bedrooms and a handy storage cupboard which offers great potential of a second bathroom/shower room.

The rear courtyard is a beautifully presented, private haven. With a raised seating area to enjoy those warm summer months with friends and family.

Lounge

14' x 14' (4.27m x 4.27m)

Double glazed window, radiator and feature fireplace.

Sitting Room

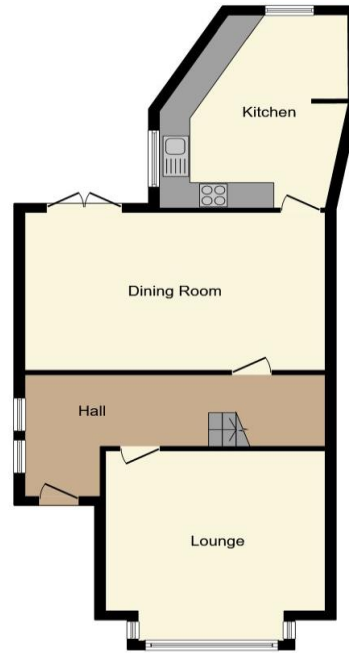
19' x 12' (5.79m x 3.66m)

Double glazed window, radiator and feature fireplace.

Kitchen

17' x 10' (5.18m x 3.05m)

Fitted kitchen comprising wall, base and drawer cupboards; sink and drainer unit with mixer tap and complementary work surfaces with tiled splash backs. Wall mounted electric double oven and gas hob. Space and plumbing for a washing machine and dishwasher. Tiled floor, double glazed window and radiator.



Ground Floor



First Floor



Second Floor

This floorplan is for illustrative purposes only and is not drawn to scale. Measurements, floor-areas, openings and orientations are approximate. They should not be relied upon for any purpose and do not form any part of an agreement. No liability is taken for any error or mis-statement. All parties must rely on their own inspections.

First Floor Landing Bedroom Three

16' x 11' 10" (4.88m x 3.61m)

Double glazed window and radiator.

Bedroom Four

14' 10" x 14' (4.52m x 4.27m)

Double glazed window and radiator.

Bathroom

Four piece bathroom suite comprising free standing bath with mixer tap and hand held shower head, shower cubicle, WC and wash hand basin with mixer tap set within vanity unit. Two double glazed windows.

Separate W.C

Comprising Wash hand basin with mixer tap and WC. Tiling to half height and double glazed window.

Second Floor Landing Bedroom One

20' x 12' (6.10m x 3.66m)

Double glazed window and radiator.

Bedroom Two

15' x 12' (4.57m x 3.66m)

Double glazed window and radiator.

Outside

With off road parking and rear garden.

To The Front

Driveway to the front allowing for off street parking.

Rear Garden

Rear garden with gravel, decking and block paved areas.



view this property online jonesandchapman.co.uk/Property/PTN114929



welcome to

Rock Lane East, Birkenhead

- End-terrace home
- Four double bedrooms
- Beautifully presented throughout
- Off-road parking
- Private rear courtyard

Tenure: Freehold EPC Rating: D

offers over

£280,000



view this property online [jonesandchapman.co.uk/Property/PTN114929](https://www.jonesandchapman.co.uk/Property/PTN114929)

Please note the marker reflects the postcode not the actual property



Property Ref:
PTN114929 - 0005

1. MONEY LAUNDERING REGULATIONS Intending purchasers will be asked to produce identification documentation at a later stage and we would ask for your co-operation in order that there is no delay in agreeing the sale. 2. These particulars do not constitute part or all of an offer or contract. 3. The measurements indicated are supplied for guidance only and as such must be considered incorrect. Potential buyers are advised to recheck measurements before committing to any expense. 4. We have not tested any apparatus, equipment, fixtures or services and it is in the buyers interest to check the working condition of any appliances. 5. Where an EPC, or a Home Report (Scotland only) is held for this property, it is available for inspection at the branch by appointment. If you require a printed version of a Home Report, you will need to pay a reasonable production charge reflecting printing and other costs. 6. We are not able to offer an opinion either written or verbal on the content of these reports and this must be obtained from your legal representative. 7. Whilst we take care in preparing these reports, a buyer should ensure that his/her legal representative confirms as soon as possible all matters relating to title including the extent and boundaries of the property and other important matters before exchange of contracts.

Jones & Chapman is a trading name of Sequence (UK) Limited which is registered in England and Wales under company number 4268443, Registered Office is Cumbria House, 16-20 Hockliffe Street, Leighton Buzzard, Bedfordshire, LU7 1GN. VAT Registration Number is 500 2481 05.


jones & chapman



0151 608 2287



Prenton@jonesandchapman.co.uk



349 Woodchurch Road, Prenton, PRENTON,
Merseyside, CH42 8PE



[jonesandchapman.co.uk](https://www.jonesandchapman.co.uk)