

Welcome to

OLD CHESTER ROAD

Specification Brochure



Three bedrooms



Two Bath/ WC



Prenton@jonesandchapman.co.uk



0151 608 2287



Welcome to

OLD CHESTER ROAD

We are absolutely thrilled to bring to market four exquisite semi detached family homes.

Designed and constructed to offer a versatile and practical layout to suit a wide demographic. These stunning homes will be a firm family favourite. Boasting a separate lounge and open plan kitchen diner, two double bedrooms and a family bathroom and a Master Bedroom with en suite.

Each home offers off road parking and is set in a thriving residential area. Just down the road from these homes is the largest regeneration scheme in the UK and with this, there is a whole new infrastructure coming to the area. Including a tram system, cinemas, stores and ambitions of becoming an internationally recognised new neighbourhood.

Already in situ are a wide selection of amenities including the Rock Retail Park, fantastic schools and transport links to Liverpool, Manchester and Chester

Please note that some of the images used have been computer generated, and therefore final finish may differ from the images provided

THE SPECIFICATIONS

General Information.

- Building Warranty - 10 Year Structural Warranty
- 870 sqft approx
- Anticipated Site Completion - December 2023

External Information

- Windows and Doors - UPVC WHITE FRAME and Composite Door in Slate Grey
- Building Materials- Standard Brick Construction.
- Roof Details- Slate Roof

Gardens

- stone paving patio area with established lawn. Enclosed via timber fence panels

Parking

- Tarmac Parking for several Vehicles



Old Chester Road

Electric Information

- White switches and sockets
- Pendant lighting throughout
- Spotlight in Kitchen

Heating Information

- Gas central heating

Plumbing Information

- Combi Boiler

Internal Doors

- Six Panelled Doors in White

Hallway

- Flooring- Vynl in a light parquet style
- Walls - White Painted Finish
- Pendant Lighting

WC/ Cloakroom

- low flush wc
- Vanity unit with inset sink
- Mirror



jones & chapman

CELEBRATING 100 YEARS IN ESTATE AGENCY

Est. 1923

Old Chester Road



Lounge

- Switches and sockets. TV Aerial cat 6 cabled
- Decorated White

Kitchen Dining Room

- Howdens Kitchen
- White Gloss
- Integrated Oven
- Four Ring Electric Hob
- Fridge freezer
- Chrome Extractor Fan
- Stainless Steel Sink with Mixer Tap
- Plumbing and space for Washing machine
- French Door to Rear Garden

Stairs and Landing

- Pendant Light
- Carpeted

Bedrooms

- White Walls
- Carpeted
- TV Point

Master Bedrooms

- White Painted Finish
- Door to En suite
- TV Points and Power points



jones & chapman

CELEBRATING 100 YEARS IN ESTATE AGENCY

Est. 1923



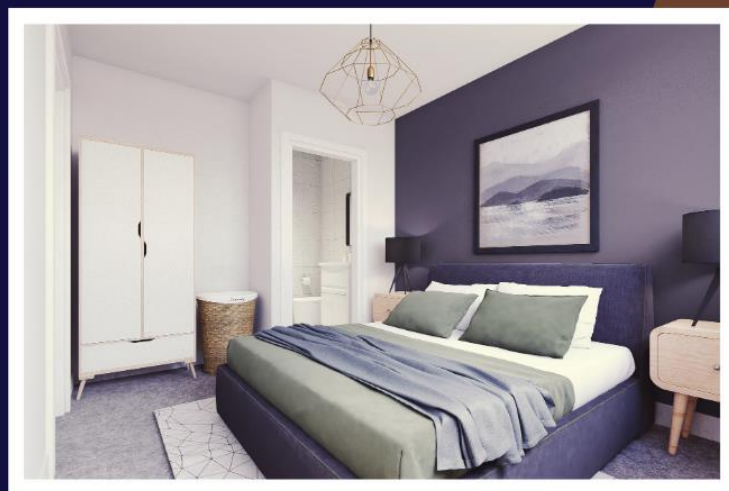
Bathroom and En suites

- Low flush wc
- Pedestal Sink
- Panel bath with Shower over
- Shower screen
- Flooring
- Walls



En suite

- Low flush wc
- Vanity unit sunken sink
- Free standing Shower
- Flooring
- Walls



Old Chester Road

OLD CHESTER ROAD

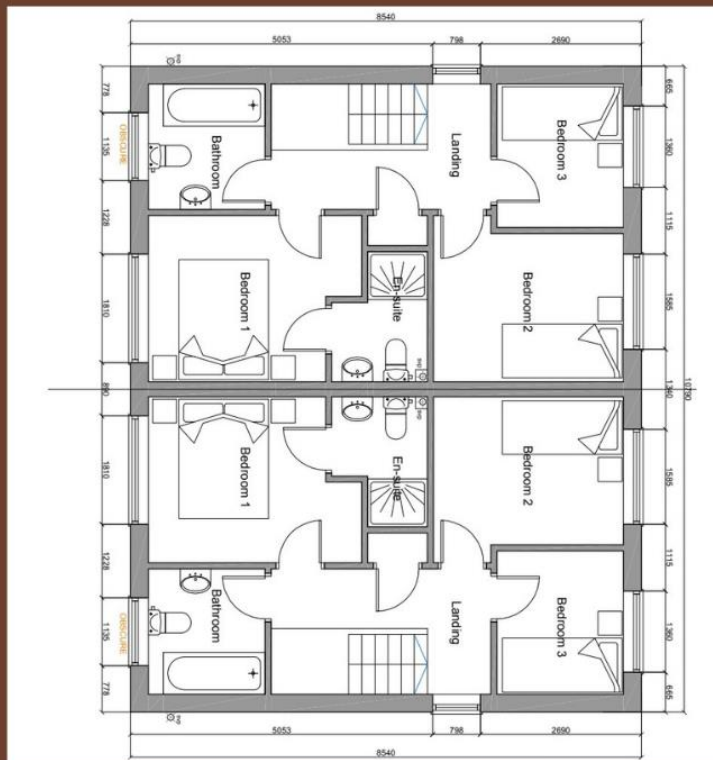
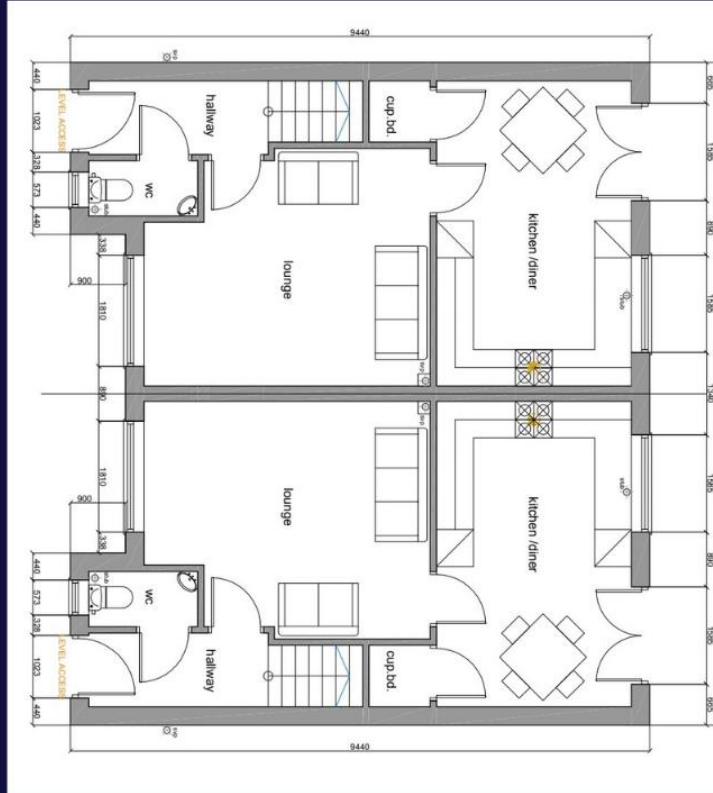
3



870 sq ft



2



THE FLOOR PLANS



The future

Be part of the future as plans are unfolding and further development graded which is destined to change the Wirral for years to come.



Millions of pounds is being invested into the area to create a fantastic thriving neighbourhood.

"At the heart of the proposals is the creation of family-friendly neighbourhoods with beautiful, green public spaces and parks. The plan will re-connect the revitalised town centre with the amazing opportunities along the Mersey waterfront, and will make the most of the town's iconic heritage and buildings."



Wirral
Council

Old Chester Road



jones & chapman

CELEBRATING 100 YEARS IN ESTATE AGENCY

Est. 1923







INTERESTED, BUT
NEED TO SELL...

PART
EXCHANGE
FACILITY
AVAILABLE



CALL TO BOOK
YOUR
VIEWING!

LET'S WORK TOGETHER!

Buying or selling a home can be a stressful process but it doesn't have to be! Contact Jonathan to find out more.



JONATHAN HOWELL
BRANCH MANAGER

CONTACT:

✉ JONATHAN.HOWELL@JONESANDCHAPMAN.CO.UK
☎ 0151 608 2287
❤ @LNHNORTHWEST





sequence
land & new homes

