

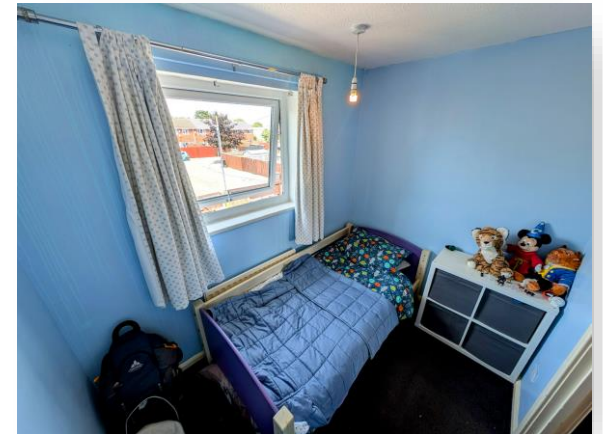


Tees Court, Ellesmere Port CH65 3DJ

welcome to

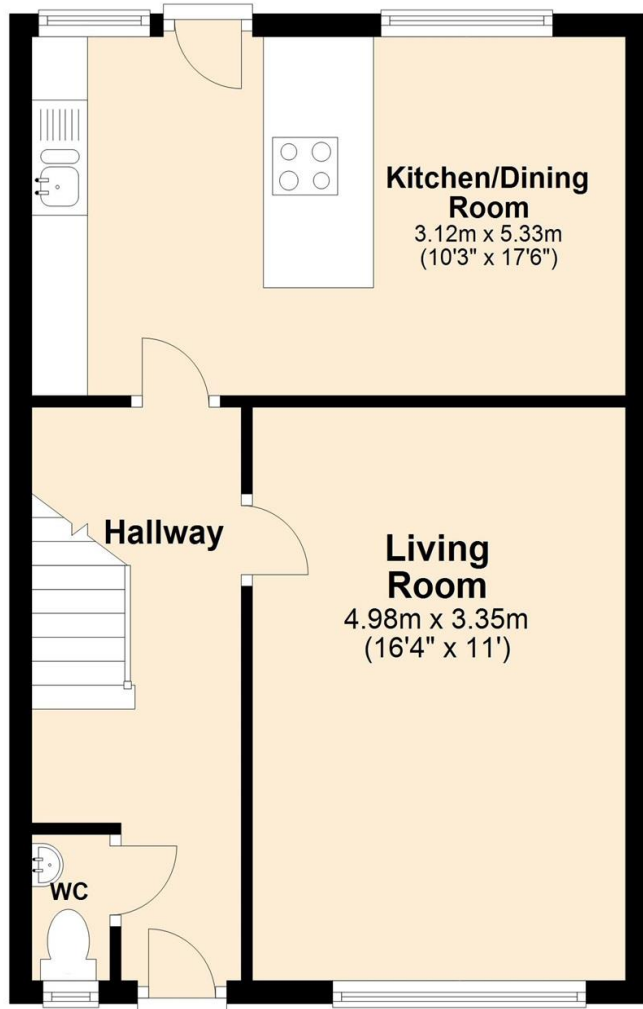
Tees Court, Ellesmere Port

This three bedroom mid terrace would be perfect for first time buyers, or those looking to down size. Please call our office today to arrange your viewing.



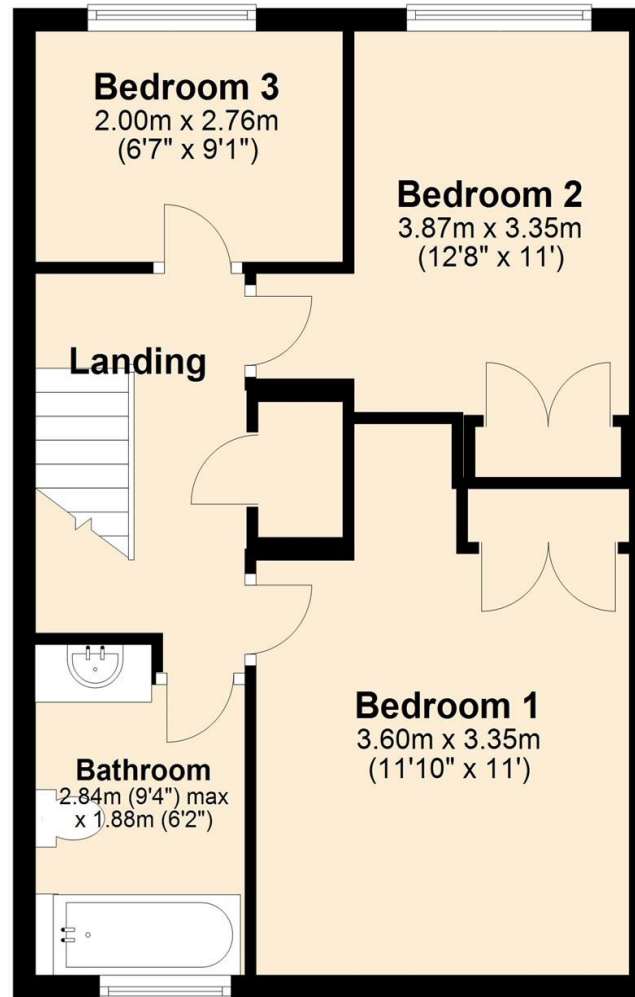
Ground Floor

Approx. 43.7 sq. metres (470.2 sq. feet)



First Floor

Approx. 43.6 sq. metres (469.6 sq. feet)



Entrance Hall

W.C

Living Room

16' 4" x 11' (4.98m x 3.35m)

Kitchen Diner

10' 3" x 17' 6" (3.12m x 5.33m)

Landing

Bedroom One

11' 10" x 11' (3.61m x 3.35m)

Bedroom Two

12' 8" x 11' (3.86m x 3.35m)

Bedroom Three

6' 7" x 9' 1" (2.01m x 2.77m)

Bathroom

Front Garden

Rear Garden

Total area: approx. 87.3 sq. metres (939.9 sq. feet)

welcome to

Tees Court, Ellesmere Port

- Council Tax Band A
- Three Bedrooms
- Mid Terrace
- Kitchen Diner
- Off Road Parking To Rear

Tenure: Freehold EPC Rating: Awaited

£130,000



Please note the marker reflects the postcode not the actual property

view this property online [jonesandchapman.co.uk/Property/LSU106072](https://www.jonesandchapman.co.uk/Property/LSU106072)



Property Ref:
LSU106072 - 0004

1. MONEY LAUNDERING REGULATIONS Intending purchasers will be asked to produce identification documentation at a later stage and we would ask for your co-operation in order that there is no delay in agreeing the sale. 2. These particulars do not constitute part or all of an offer or contract. 3. The measurements indicated are supplied for guidance only and as such must be considered incorrect. Potential buyers are advised to recheck measurements before committing to any expense. 4. We have not tested any apparatus, equipment, fixtures or services and it is in the buyers interest to check the working condition of any appliances. 5. Where an EPC, or a Home Report (Scotland only) is held for this property, it is available for inspection at the branch by appointment. If you require a printed version of a Home Report, you will need to pay a reasonable production charge reflecting printing and other costs. 6. We are not able to offer an opinion either written or verbal on the content of these reports and this must be obtained from your legal representative. 7. Whilst we take care in preparing these reports, a buyer should ensure that his/her legal representative confirms as soon as possible all matters relating to title including the extent and boundaries of the property and other important matters before exchange of contracts.


jones & chapman



0151 339 4878



LittleSutton@jonesandchapman.co.uk



349 Chester Road, Little Sutton, LITTLE SUTTON, Cheshire, CH66 3RG



[jonesandchapman.co.uk](https://www.jonesandchapman.co.uk)