



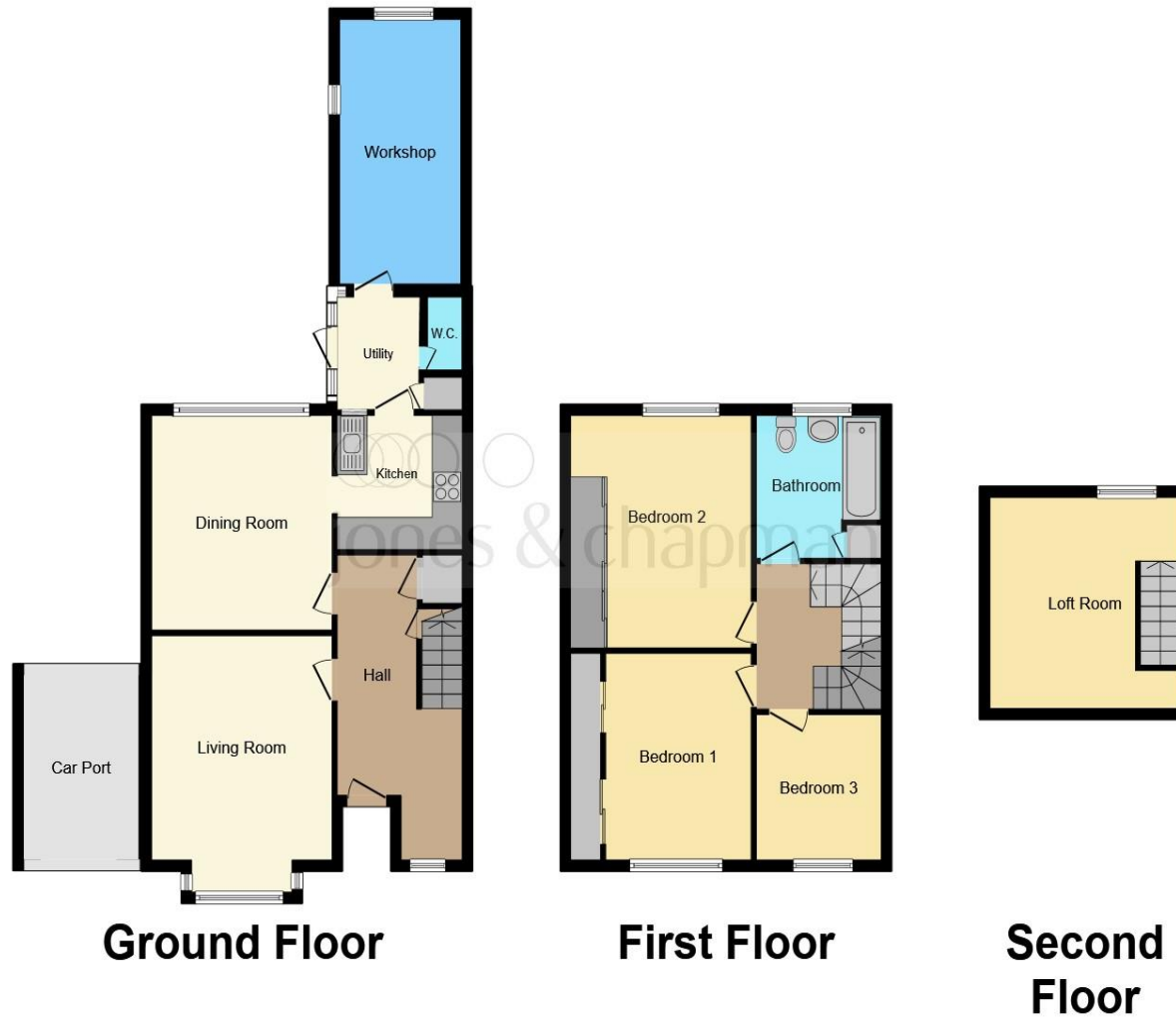
Seaview Lane, Wirral CH61 3UL

welcome to

Seaview Lane, Wirral

Jones and Chapman are proud to present this spacious traditional, three bedroom semi-detached family home, situated in the highly sought after area of Irby, close by to many local amenities and falls within the catchment area for highly regarded local schools.





Hallway

Living Room

11' 8" x 13' 7" (3.56m x 4.14m)

Dining Room

11' 8" x 13' 2" (3.56m x 4.01m)

Kitchen

8' 2" x 8' 2" (2.49m x 2.49m)

Bedroom One

8' 8" x 12' 7" (2.64m x 3.84m)

Bedroom Two

11' 4" x 13' (3.45m x 3.96m)

Bedroom Three

7' 8" x 8' 9" (2.34m x 2.67m)

Loft Room

12' 5" x 12' 9" (3.78m x 3.89m)

Bathroom

Externally

This floor plan is for illustrative purposes only. It is not drawn to scale. Any measurements, floor areas (including any total floor area), openings and orientation are approximate. No details are guaranteed, they cannot be relied upon for any purpose and they do not form part of any agreement. No liability is taken for any error, omission or misstatement. A party must rely upon its own inspection(s). Powered by www.focalagent.com

welcome to

Seaview Lane, Wirral

- Traditional & Charming Semi-Detached
- Views To The Countryside & Sea
- Situated in the Popular Area of Irby Close to Local Amenities
- Ample Parking For Five Cars With Car-Port
- Potential To Extend

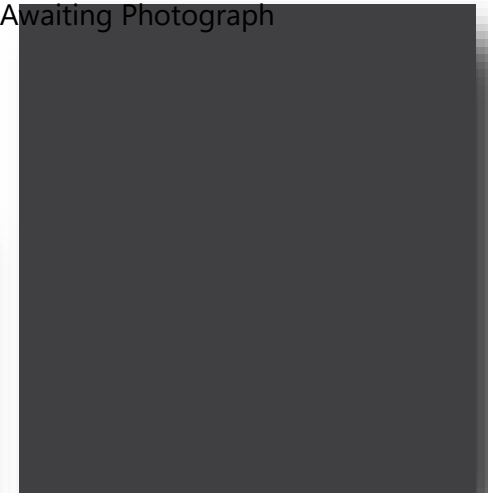
Tenure: Freehold EPC Rating: D

offers in the region of

£375,000



Awaiting Photograph



Please note the marker reflects the postcode not the actual property

view this property online jonesandchapman.co.uk/Property/GRE105560



Property Ref:
GRE105560 - 0012

1. MONEY LAUNDERING REGULATIONS Intending purchasers will be asked to produce identification documentation at a later stage and we would ask for your co-operation in order that there is no delay in agreeing the sale. 2. These particulars do not constitute part or all of an offer or contract. 3. The measurements indicated are supplied for guidance only and as such must be considered incorrect. Potential buyers are advised to recheck measurements before committing to any expense. 4. We have not tested any apparatus, equipment, fixtures or services and it is in the buyers interest to check the working condition of any appliances. 5. Where an EPC, or a Home Report (Scotland only) is held for this property, it is available for inspection at the branch by appointment. If you require a printed version of a Home Report, you will need to pay a reasonable production charge reflecting printing and other costs. 6. We are not able to offer an opinion either written or verbal on the content of these reports and this must be obtained from your legal representative. 7. Whilst we take care in preparing these reports, a buyer should ensure that his/her legal representative confirms as soon as possible all matters relating to title including the extent and boundaries of the property and other important matters before exchange of contracts.

 jones & chapman



0151 677 9473



Greasby@jonesandchapman.co.uk



142 Greasby Road, Greasby, Merseyside, CH49 3NQ



jonesandchapman.co.uk