



**Belmont Street, Southport, PR8 1NE**

**welcome to**

**Belmont Street, Southport**

Someday, I wish upon a star. Wake up where the clouds are far behind me. Where trouble melts like lemon drops, High above the chimney top, That's where you'll find me.....On Belmont Street! Somewhere over the rainbow is your dream home, View today as this could well be that home sweet home!



## Description

Semi-detached Dream!

A wonderful, spacious family home is on offer today. Close to local schools, both Birkdale village and Southport town centre, amenities and transport links, these are just a few of many reasons why this house should be at the top of your viewing list.

Downstairs you have a bright and airy hallway, downstairs storage, a living room through to dining room. The kitchen is a superb size and offers plenty of space for a growing family, with access on to the rear garden, making this part of the house perfect for entertaining friends and family all year round.

To the first floor you have two double bedrooms and a single bedroom and a family bathroom suite with a separate W.C. Completing this home perfectly is the large front garden mainly laid with gravel, further benefiting from an extensive driveway providing ample off road parking with the added bonus of a garage.

Ready to view!!

## Entrance Hall

Front facing double glazed door and under the stairs storage cupboard

## WC

WC and wash hand basin, side facing double glazed window

## Lounge

12' 7" x 11' 11" (3.84m x 3.63m)

Front facing double glazed window

## Dining Room

7' 11" x 9' 2" (2.41m x 2.79m)

Rear facing double glazed window

## Kitchen

9' 11" x 8' 10" (3.02m x 2.69m)

Fully fitted kitchen with wall and base units, work surfaces and sink with drainer, electric oven and gas hob with cooker hood, plumbing for washing machine, rear facing double glazed window and side facing door

## Landing

Side facing double glazed window

## Bedroom One

13' 10" x 11' 10" (4.22m x 3.61m)

Front facing double glazed bay window

## Bedroom Two

9' 10" x 10' 11" (3.00m x 3.33m)

Rear facing double glazed window

## Bedroom Three

6' 2" x 6' 4" (1.88m x 1.93m)

Front facing double glazed window

## Bathroom

5' 10" x 7' 5" (1.78m x 2.26m)

Part tiled bathroom with a fitted bath with shower, wash hand basin, cupboard for boiler and rear facing double glazed window

## Separate WC

WC

## Front Garden

Gated paved driveway

## Rear Garden

Courtyard bordered by raised flower beds

## Garage

Up and over doors



***view this property online*** [jonesandchapman.co.uk/Property/GRE105335](http://jonesandchapman.co.uk/Property/GRE105335)



welcome to

## Belmont Street, Southport

- Three Bedroom Semi Detached House
- Lounge
- Dining Room
- Downstairs W.C
- Bathroom with Separate W.C

Tenure: Freehold EPC Rating: D

**£230,000**

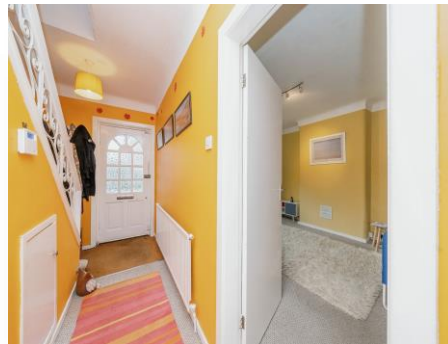


Ground Floor



First Floor

This floorplan is for illustrative purposes only and is not drawn to scale. Measurements, floor-areas, openings and orientations are approximate. They should not be relied upon for any purpose and do not form any part of an agreement. No liability is taken for any error or mis-statement. All parties must rely on their own inspections.



Please note the marker reflects the postcode not the actual property

**view this property online** [jonesandchapman.co.uk/Property/GRE105335](https://www.jonesandchapman.co.uk/Property/GRE105335)



Property Ref:  
GRE105335 - 0003

1. MONEY LAUNDERING REGULATIONS Intending purchasers will be asked to produce identification documentation at a later stage and we would ask for your co-operation in order that there is no delay in agreeing the sale. 2. These particulars do not constitute part or all of an offer or contract. 3. The measurements indicated are supplied for guidance only and as such must be considered incorrect. Potential buyers are advised to recheck measurements before committing to any expense. 4. We have not tested any apparatus, equipment, fixtures or services and it is in the buyers interest to check the working condition of any appliances. 5. Where an EPC, or a Home Report (Scotland only) is held for this property, it is available for inspection at the branch by appointment. If you require a printed version of a Home Report, you will need to pay a reasonable production charge reflecting printing and other costs. 6. We are not able to offer an opinion either written or verbal on the content of these reports and this must be obtained from your legal representative. 7. Whilst we take care in preparing these reports, a buyer should ensure that his/her legal representative confirms as soon as possible all matters relating to title including the extent and boundaries of the property and other important matters before exchange of contracts.

Jones & Chapman is a trading name of Sequence (UK) Limited which is registered in England and Wales under company number 4268443, Registered Office is Cumbria House, 16-20 Hockliffe Street, Leighton Buzzard, Bedfordshire, LU7 1GN. VAT Registration Number is 500 2481 05.

 jones & chapman



**0151 677 9473**



[greasby@jonesandchapman.co.uk](mailto:greasby@jonesandchapman.co.uk)



142 Greasby Road, Greasby, Merseyside, CH49 3NQ



[jonesandchapman.co.uk](https://www.jonesandchapman.co.uk)