



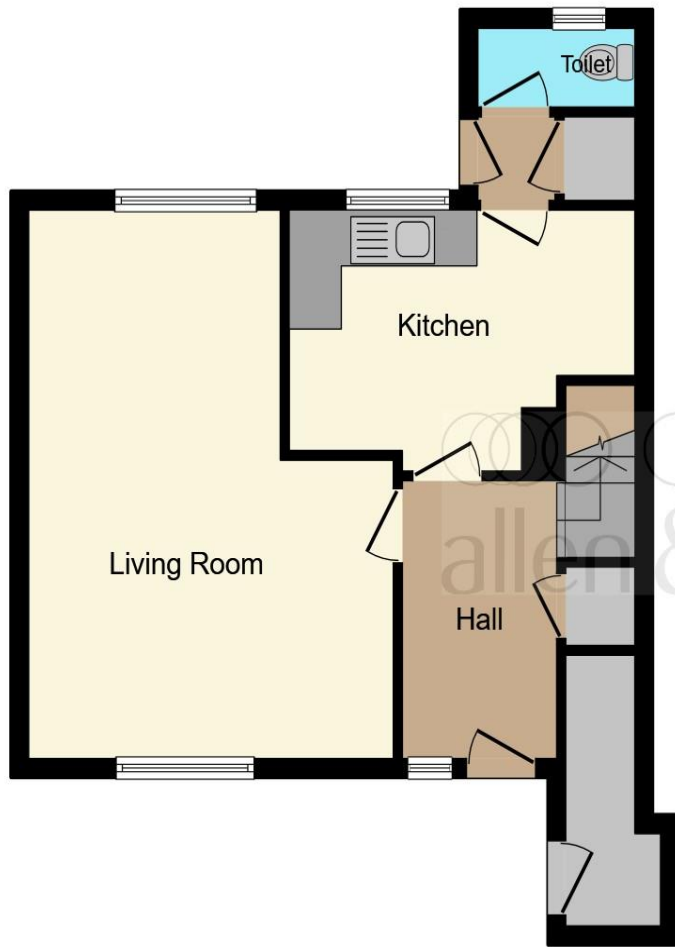
Upper East Hayes, Bath, BA1 6LN

welcome to

Upper East Hayes, Bath

An end-of-terrace three bedroom home situated in the Walcot area of the Bath, just 1.4 miles from Bath Spa and sitting on an enormous plot size to the front, side and rear.





Ground Floor



First Floor

Living Room

19' 2" x 13' 7" (5.84m x 4.14m)

Kitchen

9' x 13' (2.74m x 3.96m)

Utility Room

11' 7" Max x 4' (3.53m Max x 1.22m)

Bedroom One

9' 8" x 13' 8" Max (2.95m x 4.17m Max)

Bedroom Two

9' 2" x 10' 3" (2.79m x 3.12m)

Bedroom Three

9' 8" x 8' 8" Max (2.95m x 2.64m Max)

Bathroom

6' x 5' 11" (1.83m x 1.80m)

This floor plan is for illustrative purposes only. It is not drawn to scale. Any measurements, floor areas (including any total floor area), openings and orientation are approximate. No details are guaranteed, they cannot be relied upon for any purpose and they do not form part of any agreement. No liability is taken for any error, omission or misstatement. A party must rely upon its own inspection(s). Powered by www.focalagent.com

welcome to

Awaiting Photograph

Upper East Hayes, Bath

- Situated on an enormous plot size to the front, side and rear with garage
- Excellent scope for alteration, refurbishment and extension subject to the usual consents being obtained
- End-of-terrace home
- Three bedrooms
- Well regarded local schools nearby

Tenure: Freehold EPC Rating: D

offers in excess of

£450,000



Please note the marker reflects the postcode not the actual property

view this property online [allenandharris.co.uk/Property/LAR105115](https://www.allenandharris.co.uk/Property/LAR105115)



Property Ref:
LAR105115 - 0005

1. MONEY LAUNDERING REGULATIONS Intending purchasers will be asked to produce identification documentation at a later stage and we would ask for your co-operation in order that there is no delay in agreeing the sale. 2. These particulars do not constitute part or all of an offer or contract. 3. The measurements indicated are supplied for guidance only and as such must be considered incorrect. Potential buyers are advised to recheck measurements before committing to any expense. 4. We have not tested any apparatus, equipment, fixtures or services and it is in the buyers interest to check the working condition of any appliances. 5. Where an EPC, or a Home Report (Scotland only) is held for this property, it is available for inspection at the branch by appointment. If you require a printed version of a Home Report, you will need to pay a reasonable production charge reflecting printing and other costs. 6. We are not able to offer an opinion either written or verbal on the content of these reports and this must be obtained from your legal representative. 7. Whilst we take care in preparing these reports, a buyer should ensure that his/her legal representative confirms as soon as possible all matters relating to title including the extent and boundaries of the property and other important matters before exchange of contracts.


allen & harris



01225 482244



BathLarkhall@allenandharris.co.uk



1 Balustrade, Larkhall, Bath, Somerset, BA1 6QA



allenandharris.co.uk