



Kilburn Avenue, Wirral CH62 8BG

welcome to

Kilburn Avenue, Wirral

A superb opportunity to purchase a spacious three bedroom detached property offering a well planned interior, a good sized rear garden, ample off road parking, and a garage. A must view!



Auctioneer's Comments

This property is offered through Modern Method of Auction. Should you view, offer or bid your data will be shared with the Auctioneer, iamsold Limited. This method requires both parties to complete the transaction within 56 days, allowing buyers to proceed with mortgage finance (subject to lending criteria, affordability and survey). The buyer is required to sign a reservation agreement and make payment of a non-refundable Reservation Fee of 4.5% of the purchase price including VAT, subject to a minimum of £6600.00 including VAT. This fee is paid in addition to purchase price and will be considered as part of the chargeable consideration for the property in the calculation for stamp duty liability. Buyers will be required to complete an identification process with iamsold and provide proof of how the purchase would be funded. The property has a Buyer Information Pack containing documents about the property. The documents may not tell you everything you need to know, so you must complete your own due diligence before bidding. A sample of the Reservation Agreement and terms and conditions are contained within this pack. The buyer will also make payment of no more than £349 inc. VAT towards the preparation cost of the pack. Please confirm exact costs with the auctioneer. The estate agent and auctioneer may recommend the services of other providers to you, in which they will be paid for the referral. These services are optional, and you will be advised of any payment, in writing before any services are accepted. Listing is subject to a start price and undisclosed reserve price that can change.

Property Description

Jones and Chapman are pleased to bring to the market this well planned three-bedroom detached family home set in a sought after area close to a wide range of local services and amenities.

The bright and airy interior is in need of a little updating but boasts well-proportioned rooms and a layout that really suits modern living. The dining kitchen sits at the front of the house and a large window ensures the room is filled with natural light. The kitchen has ample storage, a walk in pantry and a UPVC double glazed external door giving access to

the drive.

Front Garden

Blocked paved driveway leading to the garage and block paving also to the front of the property allowing for additional off road parking as and when required.

Living Room

15' x 15' 2" (4.57m x 4.62m)
UPVC double glazed double opening doors to the rear, gas central heating radiator and marble feature fireplace with coal effect living flame gas fire and coved ceiling.

Kitchen Diner

10' 6" x 15' 2" (3.20m x 4.62m)
Large UPVC double glazed window to the front aspect, gas central heating radiator and a matching range of wall and base units fitted with complimentary work surfaces. Single bowl sink and drainer with mixer tap over. Electric and gas combination hob with double oven to the side. Integrated fridge, space and plumbing for washing machine. Part tiled walls, walk in pantry and double glazed composite external door giving access to the driveway.

Landing

Stairs leading to the first floor landing with UPVC double glazed window to the side, walk in airing cupboard housing the gas central heating boiler. Doors leading to all rooms.

Bedroom One

10' x 15' 3" (3.05m x 4.65m)
Primary bedroom with a range of fitted bedroom furniture and large UPVC double glazed window to the rear over-looking the rear garden. Gas central heating radiator.

Bedroom Two

11' 2" x 9' (3.40m x 2.74m)
Large UPVC double glazed windows to the front aspect, gas central heating radiator and built in

wardrobe.

Bedroom Three

6' 8" x 12' 2" (2.03m x 3.71m)
UPVC double glazed window to the side and gas central heating radiator.

Family Bathroom

8' 1" x 6' 1" (2.46m x 1.85m)
UPVC double glazed window to the front aspect, fully tiled walls and coloured suite comprising panel bath with shower over, wash hand basin and close coupled WC. Gas central heating radiator.

Outside Rear Garden

Rear garden mainly laid to lawn with patio areas sitting immediately at the rear of the property and also the far end of the garden. Hard standing for summer house, side access gate and door to the garage.

Garage

Up and Over Door.



view this property online jonesandchapman.co.uk/Property/BEB110502

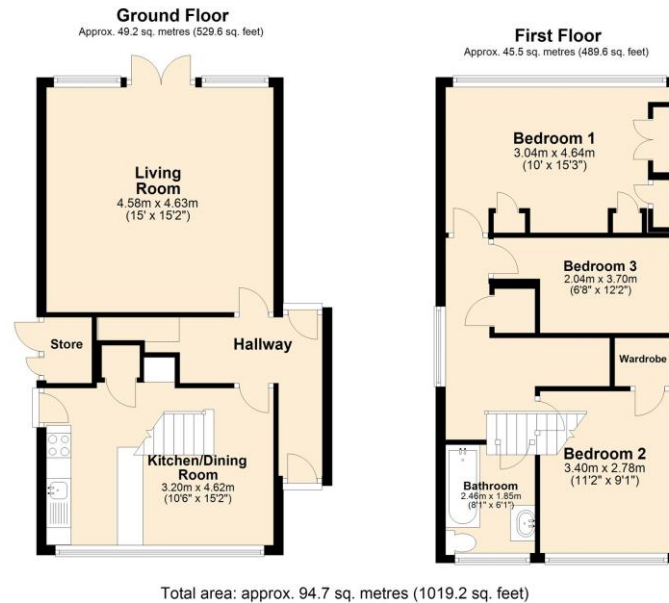


welcome to Kilburn Avenue, Wirral

- Sale by Modern Auction (T&Cs apply)
- Subject to an undisclosed Reserve Price
- Buyers fees apply
- A spacious three bedroom detached property
- Sought after area

Tenure: Freehold EPC Rating: D
Council Tax Band: D

guide price
£180,000



Please note the marker reflects the
postcode not the actual property

view this property online jonesandchapman.co.uk/Property/BEB110502



Property Ref:
BEB110502 - 0003

1. MONEY LAUNDERING REGULATIONS Intending purchasers will be asked to produce identification documentation at a later stage and we would ask for your co-operation in order that there is no delay in agreeing the sale. 2. These particulars do not constitute part or all of an offer or contract. 3. The measurements indicated are supplied for guidance only and as such must be considered incorrect. Potential buyers are advised to recheck measurements before committing to any expense. 4. We have not tested any apparatus, equipment, fixtures and services and it is in the buyers interest to check the working condition of any appliances. 5. Where an EPC, or a Home Report (Scotland only) is held for this property, it is available for inspection at the branch by appointment. If you require a printed version of a Home Report, you will need to pay a reasonable production charge reflecting printing and other costs. 6. We are not able to offer an opinion either written or verbal on the content of these reports and this must be obtained from your legal representative. 7. Whilst we take care in preparing these reports, a buyer should ensure that his/her legal representative confirms as soon as possible all matters relating to title including the extent and boundaries of the property and other important matters before exchange of contracts.


jones & chapman



0151 644 8666



Bebington@jonesandchapman.co.uk



4 Church Road, BEBINGTON, WIRRAL,
Merseyside, CH63 7PH



jonesandchapman.co.uk