



Entry Hill, Bath, BA2 5NA

welcome to

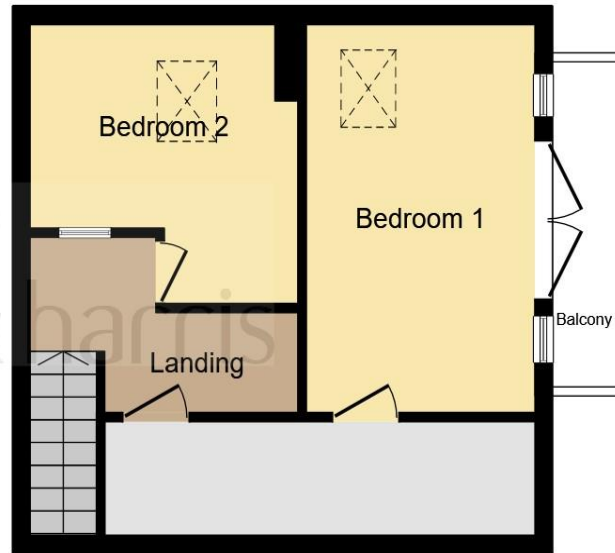
Entry Hill, Bath

The rare opportunity to buy a wonderful 2/3 bed lodge set within a large plot with the benefit of a detailed planning consent to extend into a large 3 bed house with separate 1 bed annex. Set within Entry Hill in the historic City of Bath.





Ground Floor



First Floor

Entrance Hall

Study/Bedroom Three

11' 2" x 7' 4" (3.40m x 2.24m)

Main Reception Room

18' 4" Max x 15' 8" Max (5.59m Max x 4.78m Max)

Kitchen

12' 2" x 8' (3.71m x 2.44m)

Bathroom

First Floor

Bedroom One

14' 3" x 9' 4" (4.34m x 2.84m)

Bedroom Two

10' 5" Max x 10' 5" Max (3.17m Max x 3.17m Max)

External

Parking

Garage

Rear Garden

This floor plan is for illustrative purposes only. It is not drawn to scale. Any measurements, floor areas (including any total floor area), openings and orientation are approximate. No details are guaranteed, they cannot be relied upon for any purpose and they do not form part of any agreement. No liability is taken for any error, omission or misstatement. A party must rely upon its own inspection(s). Powered by www.focalagent.com

welcome to

Entry Hill, Bath

- 2/3 Bedrooms
- Planning Consent to extend.
- Close to Bath City Centre
- Parking for up to 6 cars
- Large Plot

Tenure: Freehold EPC Rating: D

£400,000



Please note the marker reflects the postcode not the actual property

view this property online [allenandharris.co.uk/Property/BAT109809](https://www.allenandharris.co.uk/Property/BAT109809)



Property Ref:
BAT109809 - 0008

1. MONEY LAUNDERING REGULATIONS Intending purchasers will be asked to produce identification documentation at a later stage and we would ask for your co-operation in order that there is no delay in agreeing the sale. 2. These particulars do not constitute part or all of an offer or contract. 3. The measurements indicated are supplied for guidance only and as such must be considered incorrect. Potential buyers are advised to recheck measurements before committing to any expense. 4. We have not tested any apparatus, equipment, fixtures or services and it is in the buyers interest to check the working condition of any appliances. 5. Where an EPC, or a Home Report (Scotland only) is held for this property, it is available for inspection at the branch by appointment. If you require a printed version of a Home Report, you will need to pay a reasonable production charge reflecting printing and other costs. 6. We are not able to offer an opinion either written or verbal on the content of these reports and this must be obtained from your legal representative. 7. Whilst we take care in preparing these reports, a buyer should ensure that his/her legal representative confirms as soon as possible all matters relating to title including the extent and boundaries of the property and other important matters before exchange of contracts.

allen & harris



01225 425111



Bath@allenandharris.co.uk



7 Princes Buildings, BATH, Avon, BA1 2ED



allenandharris.co.uk