



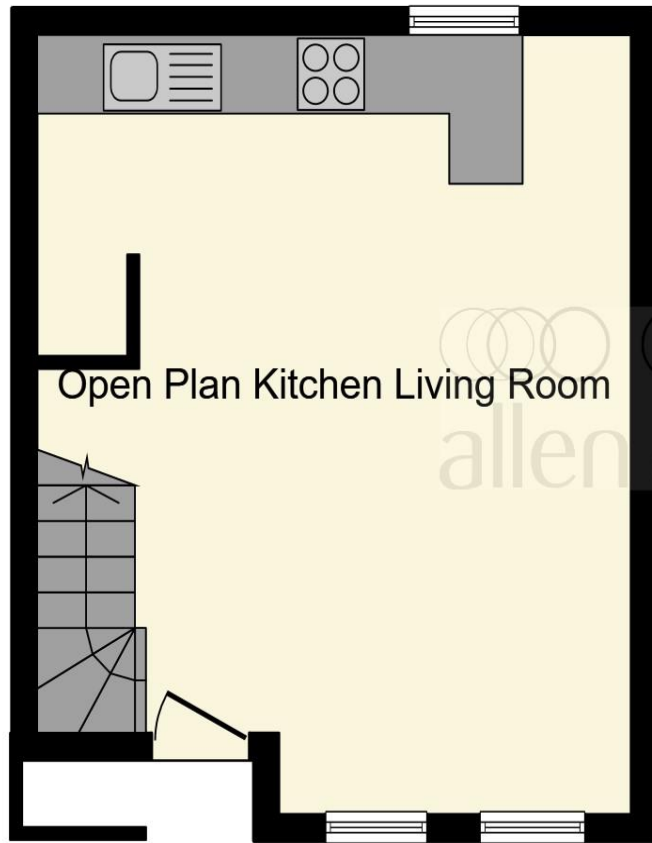
**Monmouth Place, Bath, BA1 2AU**

**welcome to**

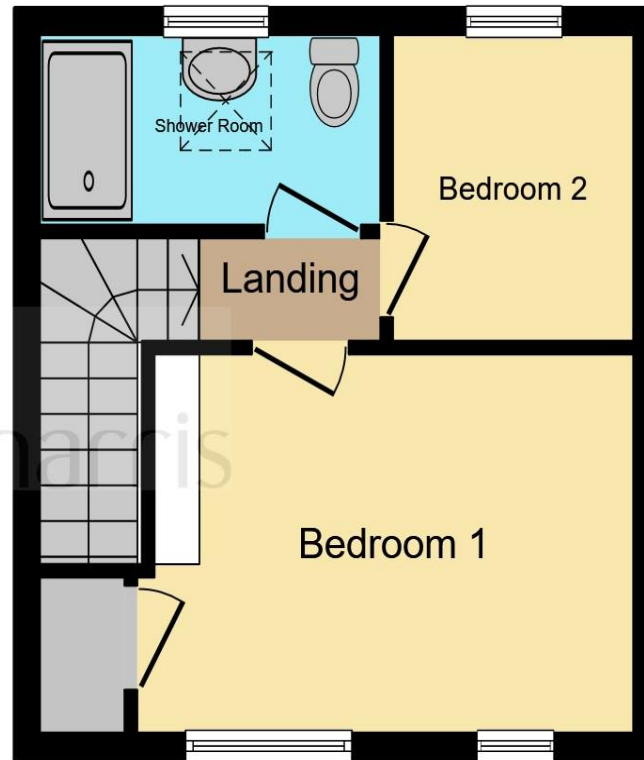
**Monmouth Place, Bath**

Set just off Queen Square, with all the city has to offer on the door step and with the beautiful Victoria Park opposite, this newly completed mews cottage has bespoke high quality fixtures and fittings throughout.





**Ground Floor**



**First Floor**

**Open Plan Living Space**

19' 10" Max x 13' 9" to stairwell ( 6.05m  
Max x 4.19m to stairwell )

**Landing**

**Bedroom 1**

11' 8" x 9' 10" ( 3.56m x 3.00m )

**Bedroom 2**

9' 7" x 6' 10" ( 2.92m x 2.08m )

**Shower Room**

9' x 4' 6" Max ( 2.74m x 1.37m Max )

This floorplan is for illustrative purposes only and is not drawn to scale. Measurements, floor-areas, openings and orientations are approximate. They should not be relied upon for any purpose and do not form any part of an agreement. No liability is taken for any error or mis-statement. All parties must rely on their own inspections.

welcome to

## Monmouth Place, Bath

- Attractive open plan living space
- High quality bespoke fixtures and fittings
- Central location
- Easy Access to local parks
- Bike Store space

Tenure: Freehold EPC Rating: C

**£400,000**



Please note the marker reflects the postcode not the actual property

**view this property online** [allenandharris.co.uk/Property/BAT109174](https://allenandharris.co.uk/Property/BAT109174)



Property Ref:  
BAT109174 - 0008

1. MONEY LAUNDERING REGULATIONS Intending purchasers will be asked to produce identification documentation at a later stage and we would ask for your co-operation in order that there is no delay in agreeing the sale. 2. These particulars do not constitute part or all of an offer or contract. 3. The measurements indicated are supplied for guidance only and as such must be considered incorrect. Potential buyers are advised to recheck measurements before committing to any expense. 4. We have not tested any apparatus, equipment, fixtures or services and it is in the buyers interest to check the working condition of any appliances. 5. Where an EPC, or a Home Report (Scotland only) is held for this property, it is available for inspection at the branch by appointment. If you require a printed version of a Home Report, you will need to pay a reasonable production charge reflecting printing and other costs. 6. We are not able to offer an opinion either written or verbal on the content of these reports and this must be obtained from your legal representative. 7. Whilst we take care in preparing these reports, a buyer should ensure that his/her legal representative confirms as soon as possible all matters relating to title including the extent and boundaries of the property and other important matters before exchange of contracts.

 allen & harris



**01225 425111**



Bath@allenandharris.co.uk



7 Princes Buildings, BATH, Avon, BA1 2ED



**allenandharris.co.uk**