



2 Floors



3 Bedrooms



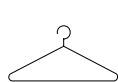
Utility



3 En suites



Garage



Dressing Area

WORSLEY THREE BEDROOM HOME

A three bedroom detached home featuring a spacious lounge, open plan kitchen / dining / family area with French doors to the rear garden.

A utility cupboard and cloakroom complete this floor. Upstairs is home to three double bedrooms. All three bedrooms come with an en suite.

The master bedroom also comes with a dressing area.

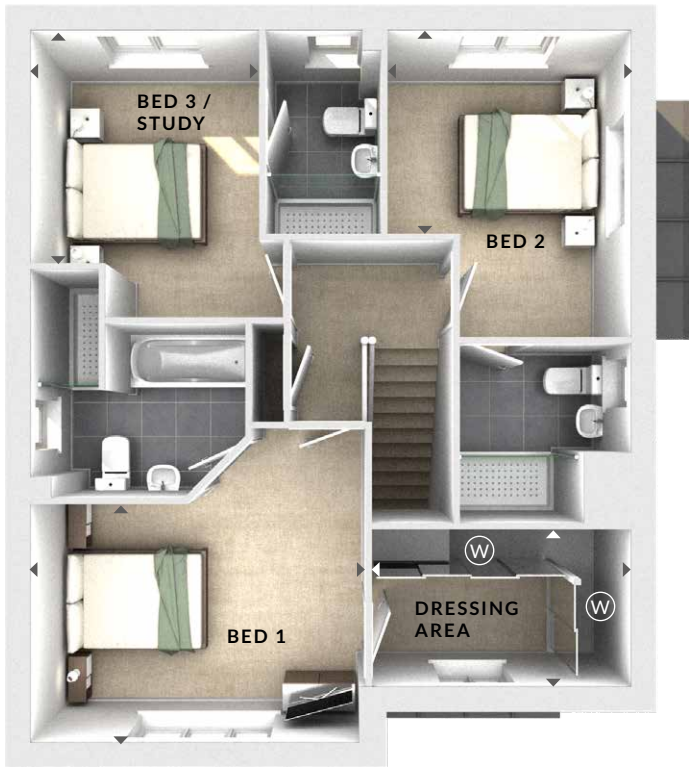
WORSLEY

THREE BEDROOM HOME

⬢ DIMENSIONS

First Floor:

- Bedroom 1**
 4.05m x 2.85m
 13'3" x 9'4"
- En Suite**
Dressing Area
 3.10m x 1.87m
 10'2" x 6'2"
- Bedroom 2**
 2.92m x 2.43m
 9'7" x 8'0"
- En Suite**
- Bedroom 3**
 2.74m x 2.79m
 9'0" x 9'2"
- En Suite**



First Floor

Ground Floor:

- Lounge**
 3.95m x 4.15m
 12'11" x 13'7"
- Kitchen / Dining / Family**
 7.20m x 4.25m
 23'8" x 13'11"
- (W) Wardrobes
 (U) Utility
 (C) Cloaks
 (S) Storage
- ◀ ▶ Measurement Points
 ▲ External Access



Ground Floor