



# ABBNEY FIELDS



A DEVELOPMENT OF 2, 3 AND 4 BEDROOM HOMES

Please see working drawing for plot-specific details and elevation treatments



**BARRATT**  
HOMES



# ABBNEY FIELDS



- Cavendish  
2 Bedroom Home
- Brentford  
3 Bedroom Home
- Maidstone  
3 Bedroom Home
- Moresby  
3 Bedroom Home
- Collaton  
3 Bedroom Home
- Chester  
4 Bedroom Home
- Kingsville  
4 Bedroom Home
- Hesketh  
4 Bedroom Home
- Radleigh  
4 Bedroom Home

- Affordable Housing
- BCP Bin Collection Point
- S/S Substation

-  Bat box
-  Swift box
-  Play area
-  Hedgehog highway applies to all gardens
-  Parkland area
-  Tarmac path
-  New tree line
-  Existing trees
-  Wild flowers meadow

Positioning of our sustainability features are subject to change. Speak to a Sales Adviser for more information.

[barrathomes.co.uk](http://barrathomes.co.uk)  
**0333 3558 481**





ABBNEY FIELDS



## CAVENDISH

### 2 BEDROOM HOME

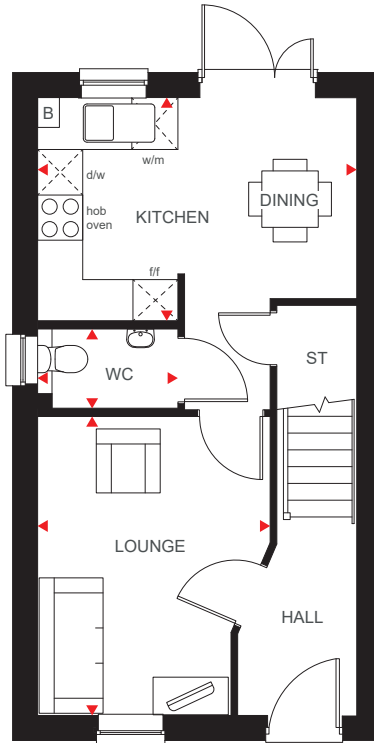
- Open-plan kitchen/dining area with French doors to the garden.
- Upstairs are two double bedrooms and the family bathroom.

**Dunmore Road, Abingdon, Oxfordshire OX14 1XD**

Please see working drawing for plot-specific details and elevation treatments



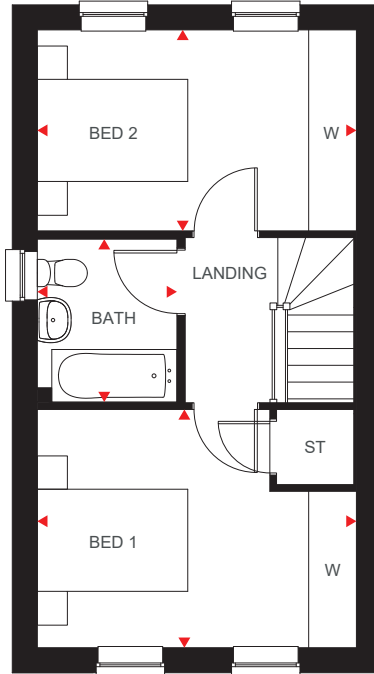
**BARRATT**  
HOMES



### Ground Floor

Lounge	3975 x 3092mm	13'0" x 10'2"
Kitchen/Dining	2967 x 4243mm	9'9" x 13'11"
WC	1053 x 1865mm	3'5" x 6'1"

(Approximate dimensions)



### First Floor

Bedroom 1	3167 x 4242mm	10'5" x 13'11"
Bedroom 2	2672 x 4242mm	8'9" x 13'11"
Bathroom	2167 x 1857mm	7'1" x 6'1"

(Approximate dimensions)

<b>KEY</b>	b	Boiler	f/f	Fridge/freezer space
	st	Store	dw	Dishwasher space
	wm	Washing machine space	◄►	Dimension location



# ABBNEY FIELDS



## MAIDSTONE

### 3 BEDROOM HOME

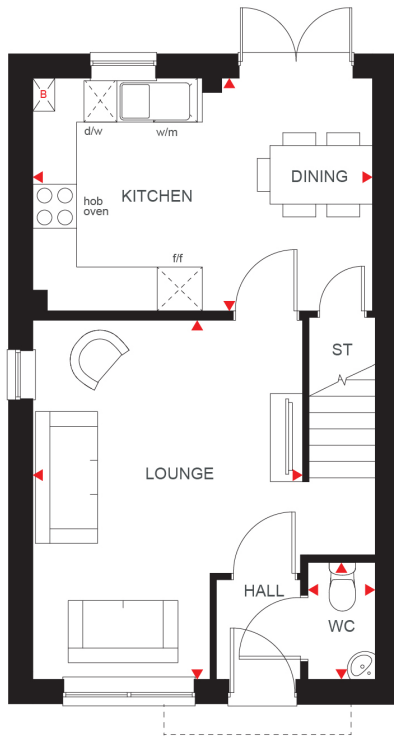
- An ideal family home designed with plenty of space for modern living.
- The ground floor comprises a good-sized lounge and an open-plan kitchen with dining area and French doors leading to the garden.
- The first floor has two double bedrooms, the generous main with en suite, a single bedroom and a family bathroom.

**Dunmore Road, Abingdon, Oxfordshire OX14 1XD**

Please see working drawing for plot-specific details and elevation treatments



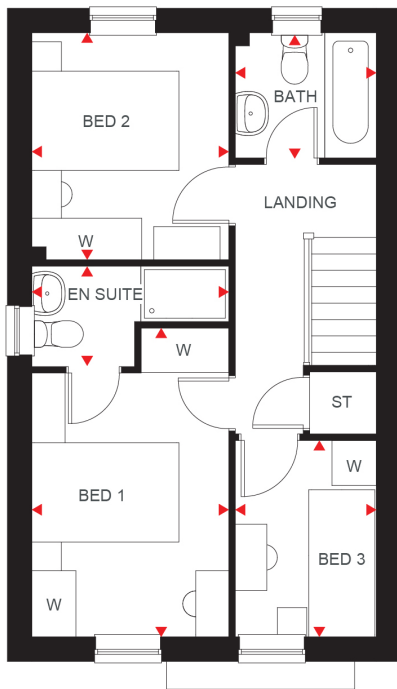
**BARRATT**  
HOMES



### Ground Floor

Lounge	4880 x 3680mm	16'0" x 12'0"
Kitchen/Dining	3180 x 4645mm	10'5" x 15'2"
WC	910 x 1590mm	2'11" x 5'2"

(Approximate dimensions)



### First Floor

Bedroom 1	4200 x 2667mm	13'9" x 8'9"
En suite	1365 x 2657mm	4'5" x 8'8"
Bedroom 2	3080 x 2067mm	10'1" x 8'9"
Bedroom 3	2670 x 1915mm	8'9" x 6'3"
Bathroom	1700 x 1915mm	5'6" x 6'3"

(Approximate dimensions)

<b>KEY</b>	b	Boiler	f/f	Fridge/freezer space
	st	Store	dw	Dishwasher space
	wm	Washing machine space	◄►	Dimension location

[barratthomes.co.uk](http://barratthomes.co.uk)





ABBNEY FIELDS



## MORESBY

### 3 BEDROOM HOME

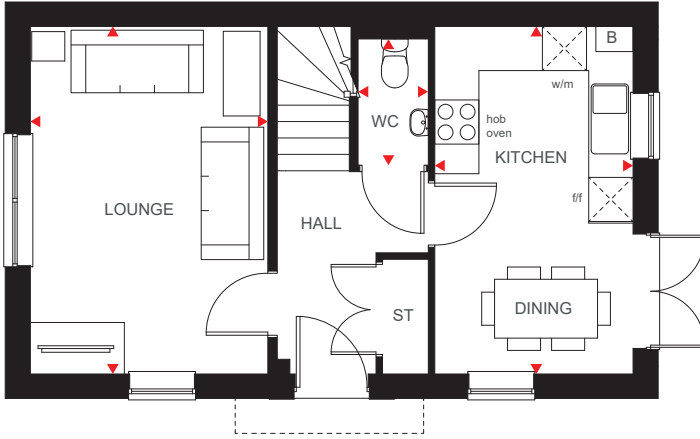
- A bright family home full of light and plenty of space.
- The ground floor comprises a dual-aspect lounge and open-plan kitchen with dining area opening onto the garden.
- The first floor accommodates two double bedrooms, the main with en suite, a single bedroom and family bathroom.

**Dunmore Road, Abingdon, Oxfordshire OX14 1XD**

Please see working drawing for plot-specific details and elevation treatments



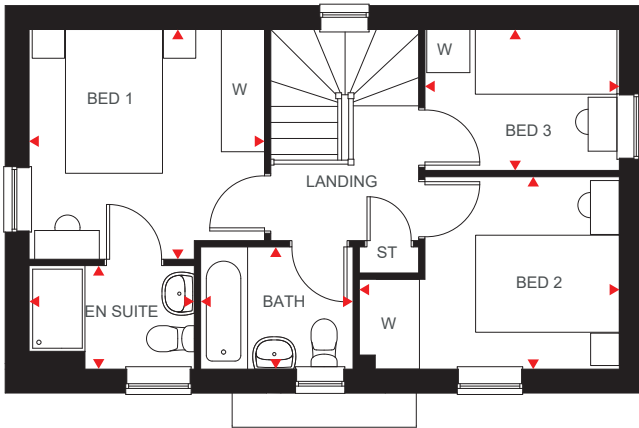
**BARRATT**  
HOMES



### Ground Floor

Lounge	4737 x 3250mm	15'6" x 10'8"
Kitchen/Dining	4737 x 2696mm	15'6" x 8'10"
WC	1894 x 945mm	6'2" x 3'1"

(Approximate dimensions)



### First Floor

Bedroom 1	3229 x 3312mm	10'7" x 10'10"
En suite	2322 x 1421mm	7'7" x 4'7"
Bedroom 2	2682 x 3628mm	8'9" x 11'10"
Bedroom 3	2696 x 1968mm	8'10" x 6'5"
Bathroom	2120 x 1688mm	6'11" x 5'6"

(Approximate dimensions)

<b>KEY</b>	b	Boiler	f/f	Fridge/freezer space
	st	Store	◄►	Dimension location
	wm	Washing machine space		





ABBNEY FIELDS



## COLLATON

### 3 BEDROOM HOME

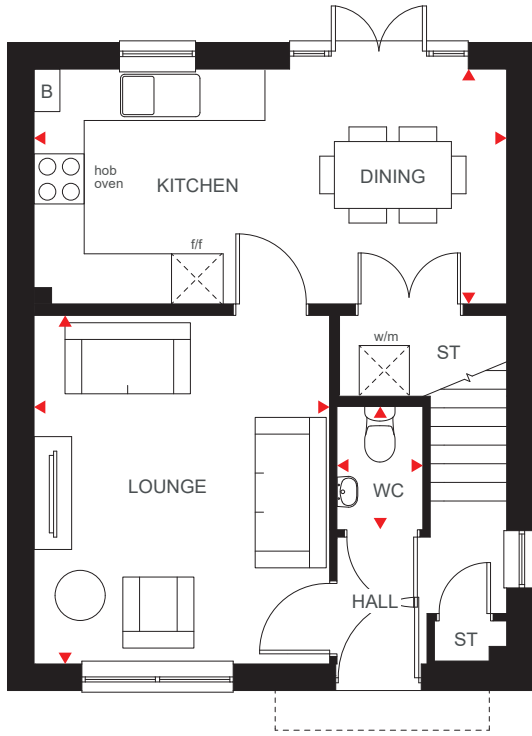
- Spacious detached home designed for modern living.
- Large open-plan kitchen, with discreet utility space, which benefits from plenty of natural light via French doors in the dining area that open onto the rear garden.
- A front-aspect lounge provides comfortable space to relax in.
- Upstairs are two double bedrooms, the main bedroom with en suite, a single bedroom, family bathroom and plenty of storage space.

**Dunmore Road, Abingdon, Oxfordshire OX14 1XD**

Please see working drawing for plot-specific details and elevation treatments



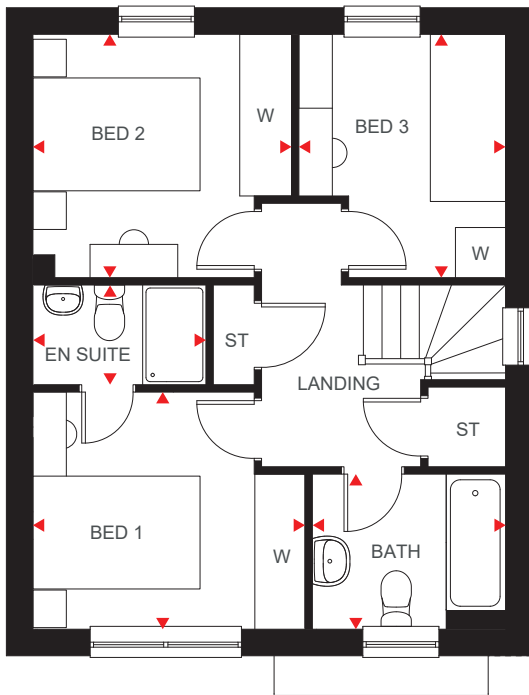
**BARRATT**  
HOMES



### Ground Floor

Kitchen/Dining	5600 x 2795mm	18'4" x 9'2"
Lounge	3496 x 4100mm	11'5" x 13'5"
WC	1028 x 1475mm	3'4" x 4'10"

(Approximate dimensions)



### First Floor

Bedroom 1	3216 x 2820mm	10'6" x 9'3"
En suite	1193 x 2020mm	3'10" x 6'7"
Bedroom 2	2857 x 3050mm	9'4" x 10'0"
Bedroom 3	2463 x 2857mm	8'0" x 9'4"
Bathroom	1901 x 2297mm	6'2" x 7'6"

(Approximate dimensions)

\*Windows may be omitted on certain plots. Speak to a Sales Advisor for details on individual plans.

- KEY**
- b Boiler
  - st Store
  - f/f Fridge/freezer space
  - ◄► Dimension location



# ABBNEY FIELDS



## BRENTFORD 3 BEDROOM HOME

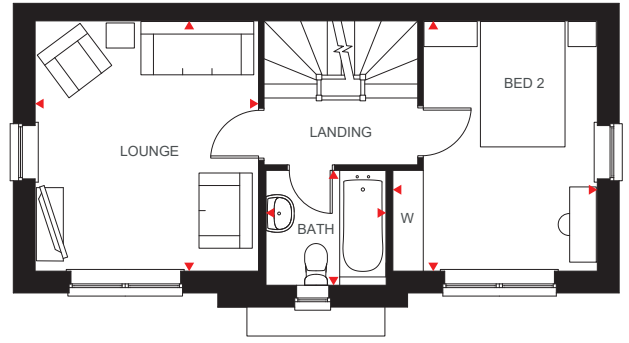
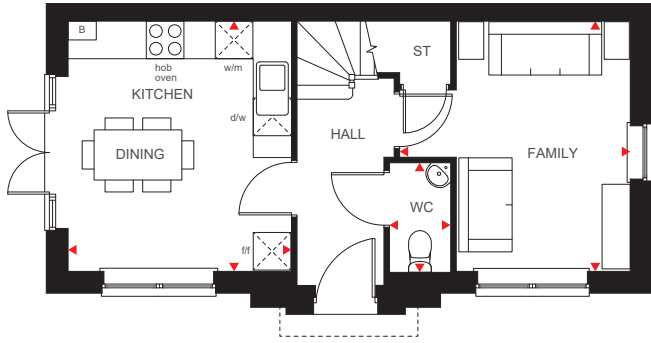
- A bright family home designed over three storeys.
- Open-plan kitchen with dining area and French doors to the garden, and a separate family room are on the ground floor.
- The first floor has a dual-aspect lounge, one double bedroom and the family bathroom.
- Two double bedrooms, the main bedroom with dual-access shower room are on the top floor.

**Dunmore Road, Abingdon, Oxfordshire OX14 1XD**

Please see working drawing for plot-specific details and elevation treatments



**BARRATT**  
HOMES



### Ground Floor

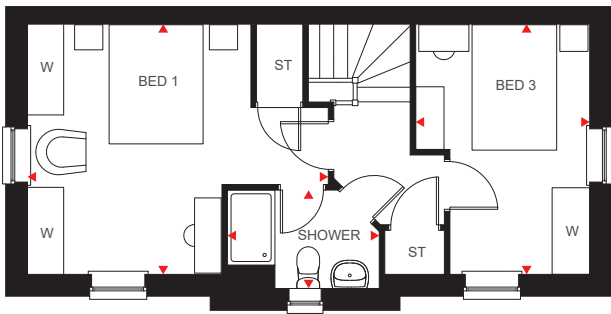
Kitchen/Dining	3860 x 3597mm	12'8" x 11'10"
Family room	3860 x 3702mm	12'8" x 12'2"
WC	1601 x 874mm	5'3" x 2'10"

[Approximate dimensions]

### First Floor

Lounge	3860 x 3597mm	12'8" x 11'10"
Bedroom 2	3860 x 3313mm	12'8" x 10'10"
Bathroom	1867 x 1701mm	6'2" x 5'7"

[Approximate dimensions]



### Second Floor

Bedroom 1	4832 x 3860mm	15'10" x 12'7"
Bedroom 3	3860 x 2800mm	12'7" x 9'2"
Shower room	2315 x 1576mm	7'7" x 5'2"

[Approximate dimensions]

#### KEY

- b Boiler
- st Store
- cyl Cylinder
- wm Washing machine space
- f/f Fridge/freezer space
- dw Dishwasher space
- ◀▶ Dimension location



ABBNEY FIELDS



## CHESTER

### 4 BEDROOM DETACHED HOME

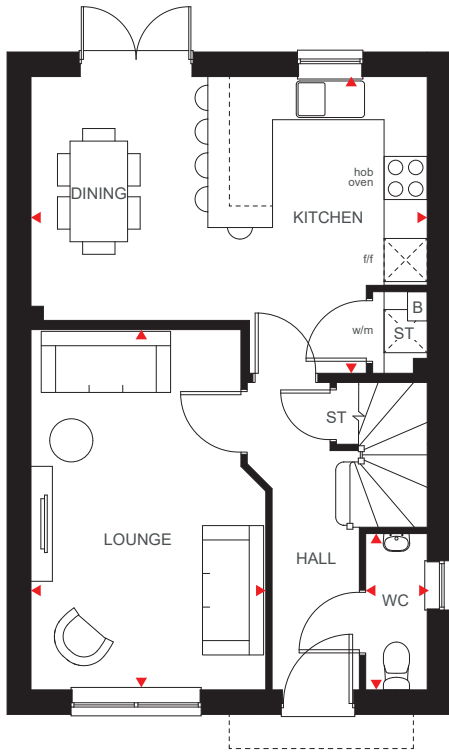
- An ideal family home filled with light through oversized windows.
- The large kitchen with dining area and French doors onto the rear garden is a great hub for both the family and to entertain.
- The spacious lounge is the perfect place for relaxation.
- Upstairs are two double bedrooms, the main bedroom with en suite, two single bedrooms and the family bathroom.

Dunmore Road, Abingdon, Oxfordshire OX14 1XD

Please see working drawing for plot-specific details and elevation treatments



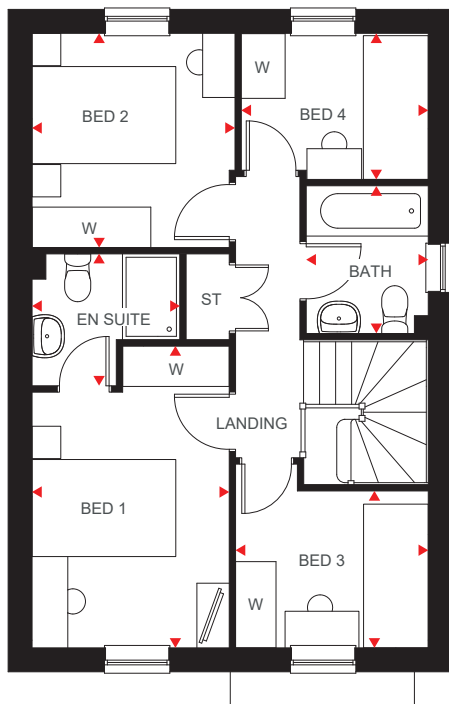
**BARRATT**  
HOMES



### Ground Floor

Kitchen/Dining	4135 x 5520mm	13'6" x 18'1"
Lounge	3269 x 5026mm	10'8" x 16'5"
WC	886 x 2164mm	2'10" x 7'1"

(Approximate dimensions)



### First Floor

Bedroom 1	2756 x 4205mm	9'0" x 13'9"
En suite	1835 x 1983mm	6'0" x 6'6"
Bedroom 2	2826 x 2986mm	9'3" x 9'9"
Bedroom 3	2686 x 2537mm	8'9" x 8'3"
Bedroom 4	2606 x 2060mm	8'6" x 6'9"
Bathroom	1698 x 2048mm	5'6" x 6'8"

(Approximate dimensions)

<b>KEY</b>	b	Boiler	f/f	Fridge/freezer space	◀▶	Dimension location
	st	Store	dw	Dishwasher space		
	wm	Washing machine space	w	Wardrobe space		



ABBNEY FIELDS



## KINGSVILLE

### 4 BEDROOM HOME

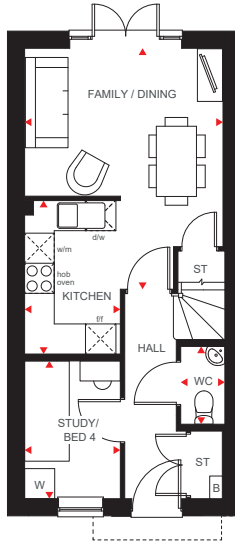
- An ideal family home designed over three floors.
- A generous open-plan kitchen with dining and family areas, and a fourth bedroom/study are on the ground floor.
- On the first floor oversized windows fill the lounge and main bedroom with light, giving them a bright and airy feeling, and the bedroom has an en suite.
- The second floor offers a further double bedroom, a single bedroom and a family bathroom.

**Dunmore Road, Abingdon, Oxfordshire OX14 1XD**

Please see working drawing for plot-specific details and elevation treatments



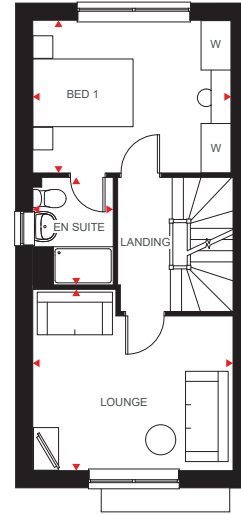
**BARRATT**  
HOMES



### Ground Floor

Family/Dining	3936 x 4820mm	12'11" x 15'10"
Kitchen	1866 x 3060mm	6'1" x 10'0"
Bedroom 4/ Study	1866 x 2749mm	6'1" x 9'0"
WC	861 x 1649mm	2'10" x 5'5"

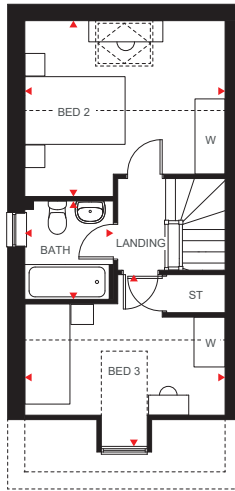
[Approximate dimensions]



### First Floor

Lounge	3936 x 3630mm	12'11" x 11'11"
Bedroom 1	3936 x 3042mm	12'11" x 10'0"
En suite	1551 x 2163mm	5'1" x 7'1"

[Approximate dimensions]



### Second Floor

Bedroom 2	3936 x 3508mm†	12'11" x 11'6"†
Bedroom 3	3936 x 3325mm†	12'11" x 10'11"†
Bathroom	1761 x 1963mm	5'9" x 6'5"

[Approximate dimensions]

†Overall floor dimension includes lower ceiling areas.

**KEY**

- b Boiler
- st Store
- bh st Bulkhead store

- wm Washing machine space
- f/f Fridge/freezer space
- dw Dishwasher space

◀▶ Dimension location





ABBEY FIELDS



## HESKETH

### 4 BEDROOM HOME

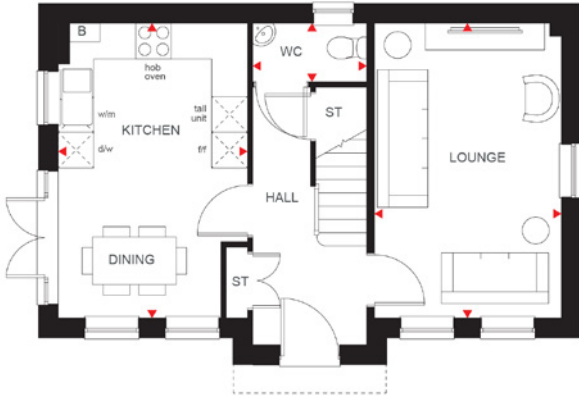
- A spacious family home designed over three floors.
- Bright, open-plan fitted kitchen with dining area leads to the garden, while a spacious lounge provides room to relax.
- Upstairs are two double bedrooms, the main bedroom with en suite and the family bathroom.
- Two further double bedrooms, and a shower room are on the second floor.

**Dunmore Road, Abingdon, Oxfordshire OX14 1XD**

Please see working drawing for plot-specific details and elevation treatments



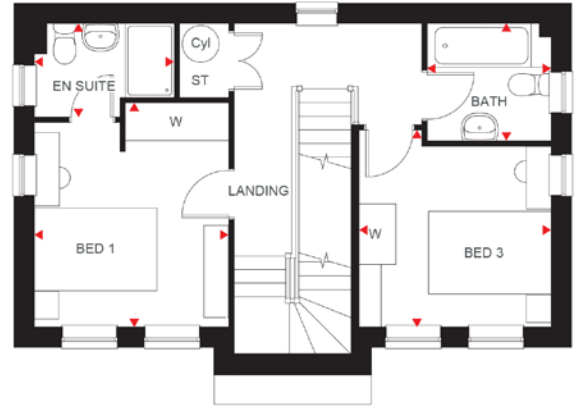
**BARRATT**  
HOMES



### Ground Floor

Kitchen/Dining	3175 x 4963mm	10'5" x 16'3"
Lounge	3113 x 4963mm	10'2" x 16'3"
WC	925 x 1923mm	3'0" x 6'3"

[Approximate dimensions]

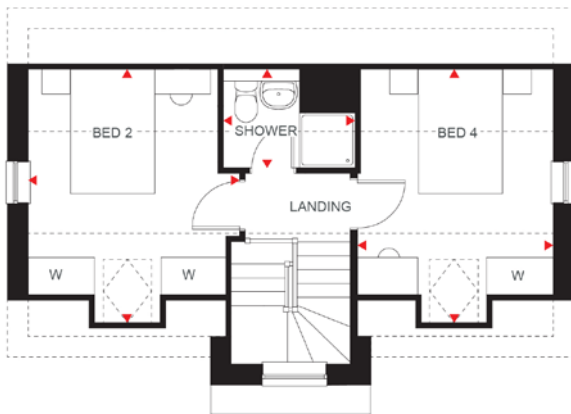


### First Floor

Bedroom 1	3175 x 3684mm	10'5" x 12'1"
En suite	1511 x 2287mm	4'11" x 7'6"
Bedroom 3	3175 x 3220mm	10'5" x 10'6"
Bathroom	1903 x 2038mm	6'2" x 6'8"

[Approximate dimensions]

Windows may be omitted on certain plots. Speak to a Sales Advisor for details on individual plots.



### Second Floor

Bedroom 2	3552 x 4076mm	11'7" x 13'4"
Bedroom 4	3175 x 4076mm	10'5" x 13'4"
Shower room	1323 x 2168mm	4'4" x 7'1"

[Approximate dimensions]

#### KEY

b	Boiler	wm	Washing machine space	◀▶	Dimension location
st	Store	f/f	Fridge/freezer space		
cyl	Cylinder	dw	Dishwasher space		



ABBNEY FIELDS



## RADLEIGH

### 4 BEDROOM DETACHED HOME

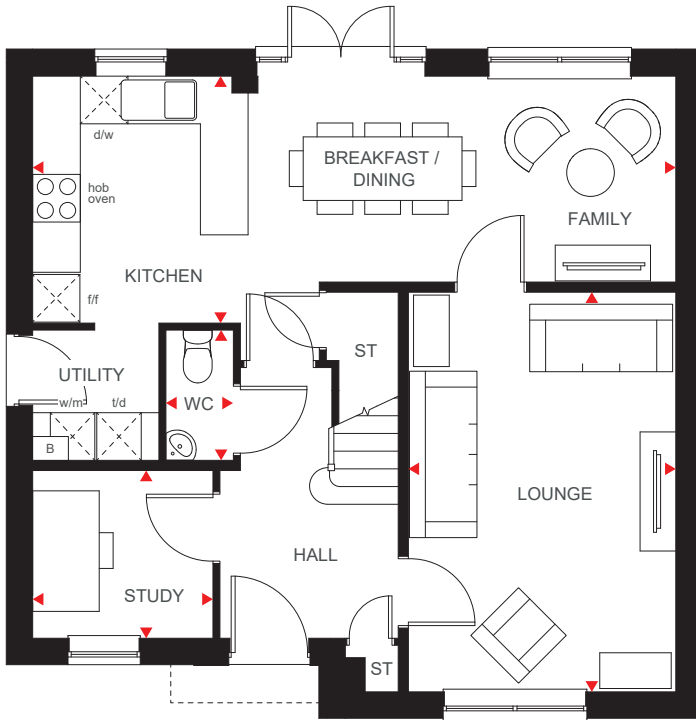
- A bright and airy family home.
- The large open-plan kitchen has dining and family areas and French doors leading to the garden. There is also a separate utility room.
- A spacious lounge and separate study are also on the ground floor.
- Upstairs are four double bedrooms, the main bedroom with en suite and the family bathroom.

**Dunmore Road, Abingdon, Oxfordshire OX14 1XD**

Please see working drawing for plot-specific details and elevation treatments



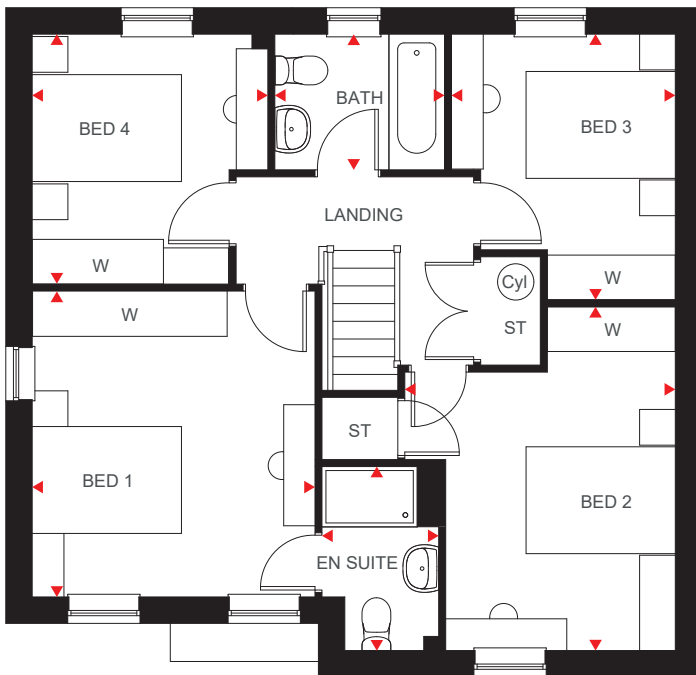
**BARRATT**  
HOMES



### Ground Floor

Kitchen/Dining	8110 x 5046mm	26'7" x 11'9"
Lounge	3361 x 5046mm	11'0" x 16'6"
Study	2273 x 2158mm	7'5" x 7'0"
Utility	1592 x 1655mm	5'2" x 5'5"
WC	850 x 1655mm	2'9" x 5'5"

(Approximate dimensions)



### First Floor

Bedroom 1	3570 x 3858mm	11'8" x 12'7"
En suite	1452 x 2289mm	4'9" x 7'6"
Bedroom 2	3423 x 4335mm	11'2" x 14'2"
Bedroom 3	2824 x 3350mm	9'3" x 10'11"
Bedroom 4	2973 x 3152mm	9'9" x 10'4"
Bathroom	2137 x 1699mm	7'0" x 5'6"

(Approximate dimensions)

- KEY**
- b Boiler
  - st Store
  - wm Washing machine space
  - f/f Fridge/freezer space
  - dw Dishwasher space
  - ◀▶ Dimension location

# CREATING A SUSTAINABLE COMMUNITY WHERE FAMILIES AND NATURE CAN THRIVE

At Barratt Homes, we do more than simply craft beautiful homes and desirable developments.

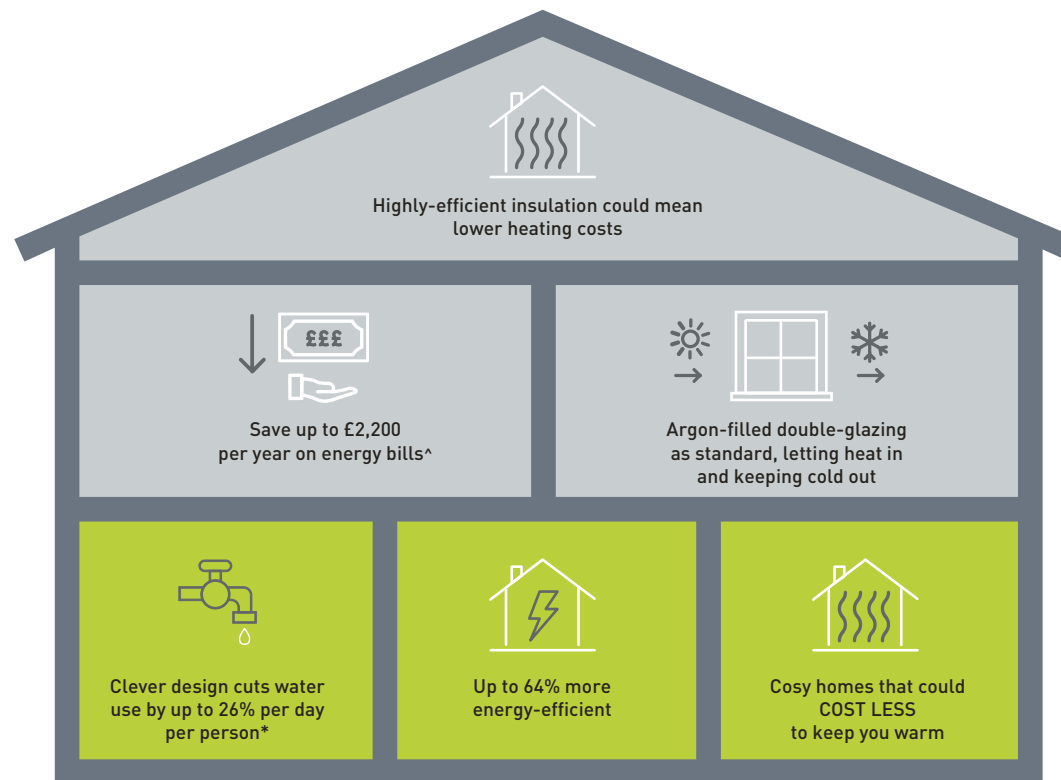
We design and build great places that meet the highest standards, and that promote sustainable, healthy and happy living for our customers.

We know we must give our customers confidence that their homes are designed and built to meet the challenges of the future. We do this through creating places where people and nature can thrive.



# WE'RE HELPING TO MAKE YOUR HOME MORE ENERGY-EFFICIENT

We create low-carbon and efficient homes that are designed and built for better living and meet the challenges of the future.



<sup>^</sup>Indicative figures, based on HBF "Watt a Save" report published July 2023.

\*Source: [Water UK](#)

'We', 'our', 'us' refers to the Barratt Developments PLC Group brands including Barratt Homes, David Wilson Homes and Barratt London. Some of the features shown may not be available with every Barratt home or on every Barratt development. Please speak to a Sales Adviser for details of the features available on the home and development you are interested in. To find out more about the energy-efficiency and sustainability of our homes visit our website. All images used are for illustrative purposes only. Information correct at time of publishing.