

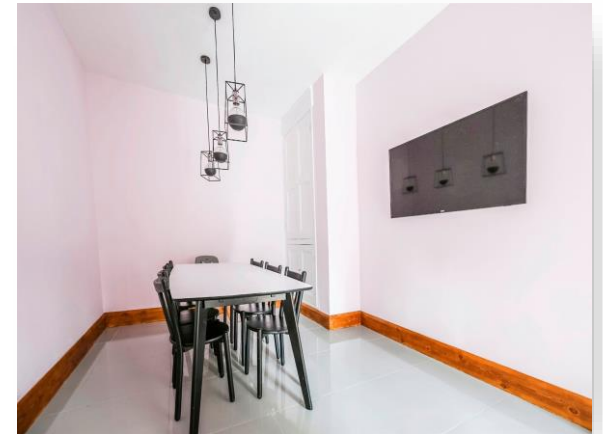


Victoria Terrace, Liverpool L15 5BH

welcome to

Victoria Terrace, Liverpool

A four bedroomed character property with a wealth of space and character. The property provides easy access to an extensive range of facilities including sought after schooling, leisure and recreational facilities, and a wide selection of independent bars and restaurants. Viewing essential



Entrance Hall

Stairs rising to first floor, stripped wood flooring.

Lounge

14' 10" into bay x 10' 10" max (4.52m into bay x 3.30m max)

Double glazed bay window to the front, radiator, feature cast iron living flame fire, original decorative coving, stripped wood flooring.

Second Reception Room

18' 6" max x 9' 11" max (5.64m max x 3.02m max)

Two double glazed windows to the front, radiator, stripped wood flooring, decorative coving.

Kitchen

10' 8" x 9' 6" (3.25m x 2.90m)

Fitted kitchen with wall and base units, work surfaces incorporating a one bowl sink with instant hot tap and drainer, electric fan oven, gas hob and induction hob with cooker hood over, tiled flooring with under floor heating, two double glazed velux ceiling windows, double glazed window to the rear and double glazed french door to the rear.

Open to:

Dining Room

19' max x 10' 2" max (5.79m max x 3.10m max)

Original larder storage cupboard, tiled floor with under floor heating.

Utility Room

7' max x 5' 9" max (2.13m max x 1.75m max)

Wall and base units, gas boiler, tiled flooring with under floor heating, double glazed window to the rear.

Landing

Stairs rising from ground floor, double glazed window to the front, radiator.

Bedroom One

14' 10" into bay x 10' 10" max (4.52m into bay x 3.30m max)

Double glazed bay window to the front, radiator, cast

iron fireplace with original tiled hearth, stripped wood flooring.

Bedroom Two

12' 6" max x 10' 2" max (3.81m max x 3.10m max)

Double glazed window to the rear, radiator, stripped wood flooring.

Bedroom Three

9' 11" x 9' 4" (3.02m x 2.84m)

Two double glazed windows to the front, radiator, stripped wood flooring.

Bedroom Four (Dressing Room)

9' x 8' 8" (2.74m x 2.64m)

Double glazed window to the rear, radiator, open wardrobes, storage, stripped wood flooring.

Bathroom

Double glazed window to the rear, walk in double shower, pedestal wash hand basin, W.C, free standing roll top bath, tiled flooring, part tiled walls.

External

Marble paved court yard with gated access.



view this property online jonesandchapman.co.uk/Property/ALT122627



welcome to

Victoria Terrace, Liverpool

- A most attractive four bedroomed double fronted terraced property
- Sought after location close to a wealth of facilities and amenities
- Two characterful sitting rooms and formal dining room area
- Luxury fitted contemporary kitchen and utility room with under floor heating
- Four spacious bedrooms including a bespoke fitted dressing room

Tenure: Freehold EPC Rating: D

offers in excess of



Please note the marker reflects the postcode not the actual property

view this property online [jonesandchapman.co.uk/Property/ALT122627](https://www.jonesandchapman.co.uk/Property/ALT122627)



Property Ref:
ALT122627 - 0007

1. MONEY LAUNDERING REGULATIONS Intending purchasers will be asked to produce identification documentation at a later stage and we would ask for your co-operation in order that there is no delay in agreeing the sale. 2. These particulars do not constitute part or all of an offer or contract. 3. The measurements indicated are supplied for guidance only and as such must be considered incorrect. Potential buyers are advised to recheck measurements before committing to any expense. 4. We have not tested any apparatus, equipment, fixtures or services and it is in the buyers interest to check the working condition of any appliances. 5. Where an EPC, or a Home Report (Scotland only) is held for this property, it is available for inspection at the branch by appointment. If you require a printed version of a Home Report, you will need to pay a reasonable production charge reflecting printing and other costs. 6. We are not able to offer an opinion either written or verbal on the content of these reports and this must be obtained from your legal representative. 7. Whilst we take care in preparing these reports, a buyer should ensure that his/her legal representative confirms as soon as possible all matters relating to title including the extent and boundaries of the property and other important matters before exchange of contracts.

Jones & Chapman is a trading name of Sequence (UK) Limited which is registered in England and Wales under company number 4268443, Registered Office is Cumbria House, 16-20 Hockliffe Street, Leighton Buzzard, Bedfordshire, LU7 1GN. VAT Registration Number is 500 2481 05.


jones & chapman



0151 734 1440



Allerton@jonesandchapman.co.uk



36 Allerton Road, LIVERPOOL, Merseyside, L18 1LN



[jonesandchapman.co.uk](https://www.jonesandchapman.co.uk)