



Connells

Whiskin Lane  
Aylesbury





## Property Description

Stunning Two-Bedroom, Two-Bathroom  
Coach House Near Stoke Mandeville

Tucked away in a peaceful residential setting just moments from Stoke Mandeville, this beautifully presented coach house offers spacious, contemporary living with thoughtful design throughout.

Step into a welcoming entrance hall featuring ample built-in storage. To the left, you'll find the stylish main bathroom complete with WC, wash hand basin, and a bath with mixer tap—perfect for unwinding after a long day.

The adjacent master bedroom is a true retreat, boasting built-in wardrobes and a sleek en-suite shower room with a modern cubicle. Further down the hallway lies the second double bedroom, ideal for guests, family, or a home office.

Opposite bedroom two is the well-appointed kitchen, finished to a high specification with space for both a washing machine and dishwasher. At the end of the hall, the generous open-plan lounge/dining area awaits—flooded with natural light from large windows and offering a versatile space for relaxing or entertaining.

## Additional Highlights:

Covered carport parking plus visitor spaces as well as a private external storage unit conveniently located next to the carport

This coach house combines comfort, practicality, and style—perfect for professionals, small families, or anyone seeking a low-maintenance home in a desirable location.

## Entrance Hall

Door to front  
Carpet underfoot  
Two storage cupboards

## Lounge/Diner

13' 5" max x 21' 5" max ( 4.09m max x 6.53m max )  
Window to rear  
Window to front  
Carpet underfoot  
Three radiators

## Kitchen

6' 3" max x 14' 2" max ( 1.91m max x 4.32m max )  
Skylight to rear  
Vinyl underfoot  
Part tiling

Radiator

Space for washing machine and dishwasher

Electric oven and gas hob

Sink/drain

Wall and base units

Car port and visitor spaces

## Bedroom One

13' 7" max x 14' 3" max ( 4.14m max x 4.34m max )

Window to front

Carpet underfoot

Radiator

## En-Suite

WC

Wash hand basin

Shower cubicle

Towel radiator

Vinyl underfoot

## Bedroom Two

11' 7" max x 13' 3" max ( 3.53m max x 4.04m max )

Window to front

Carpet underfoot

Radiator

## Bathroom

WC

Wash hand basin

Bath/mixer with shower

Towel radiator

Vinyl

## Parking

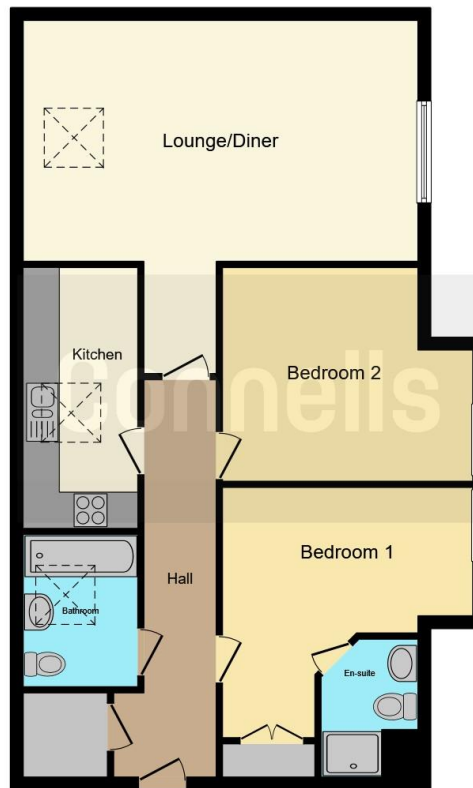












This floor plan is for illustrative purposes only. It is not drawn to scale. Any measurements, floor areas (including any total floor area), openings and orientation are approximate. No details are guaranteed, they cannot be relied upon for any purpose and they do not form part of any agreement. No liability is taken for any error, omission or misstatement. A party must rely upon its own inspection(s). Powered by [www.focalagent.com](http://www.focalagent.com)

To view this property please contact Connells on

**T 01296 395 111**  
**E [aylesbury@connells.co.uk](mailto:aylesbury@connells.co.uk)**

2 Temple Street  
 AYLESBURY HP20 2RH

EPC Rating: B

Council Tax  
 Band: C

Service Charge:  
 1500.00

Ground Rent:  
 200.00

Tenure: Leasehold

**view this property online [connells.co.uk/Property/ALS312607](http://connells.co.uk/Property/ALS312607)**

This is a Leasehold property with details as follows; Term of Lease 999 years from 01 Jan 2008. Should you require further information please contact the branch. Please Note additional fees could be incurred for items such as

1. MONEY LAUNDERING REGULATIONS Intending purchasers will be asked to produce identification documentation at a later stage and we would ask for your co-operation in order that there will be no delay in agreeing the sale. 2. These particulars do not constitute part or all of an offer or contract. 3. The measurements indicated are supplied for guidance only and as such must be considered incorrect. Potential buyers are advised to recheck measurements before committing to any expense. 4. We have not tested any apparatus, equipment, fixtures, fittings or services and it is in the buyers interest to check the working condition of any appliances.

Connells Residential is registered in England and Wales under company number 1489613, Registered Office is Cumbria House, 16-20 Hockliffe Street, Leighton Buzzard, Bedfordshire, LU7 1GN. VAT Registration Number is 500 2481 05.



**See all our properties at [www.connells.co.uk](http://www.connells.co.uk) | [www.rightmove.co.uk](http://www.rightmove.co.uk) | [www.zoopla.co.uk](http://www.zoopla.co.uk)**

Property Ref: ALS312607 - 0004