



Connells

The Peninsula Buckingham Street
Aylesbury

The Peninsula Buckingham Street Aylesbury HP20 2LL

for sale guide price
£150,000



Property Description

Stylish ONE Bedroom Apartment in Central Aylesbury — NO ONWARD CHAIN.

Located in the vibrant heart of Aylesbury Town Centre, this charming first-floor apartment offers contemporary living in a prime location. An ideal opportunity for first-time buyers, investors, or busy professionals seeking convenience and comfort.

Step into a welcoming entrance hall adorned with sleek wood-effect flooring and a handy storage cupboard—perfect for coats, shoes, and everyday essentials. The hallway flows effortlessly into an inviting open-plan lounge and kitchen, designed for relaxation and entertaining. The kitchen is fully equipped with integrated appliances including a fridge/freezer, washing machine, dishwasher, and electric oven with hob—combining style and functionality.

The spacious double bedroom features a front aspect window and soft carpet underfoot, creating a cosy retreat. The bathroom boasts a modern, bright design with a bath and overhead shower—ideal for unwinding after a long day.

With all the amenities of town centre living just a short stroll away, this property ticks all the boxes for comfort, practicality, and accessibility.

A central location within easy reach of local

amenities including shopping, sports facilities, eateries, bars and for commuters a mainline rail service which reaches London Marylebone in about 55 minutes. The A41 gives fast access to both the M40 & M25 motorway network.

Entrance Hall

Door to front, wood effect flooring underfoot, storage cupboard

Kitchen/Lounge

15' 3" max x 13' 11" max (4.65m max x 4.24m max)

Window to front, wood effect flooring, electric oven and hob, radiator, part tiling, wall and base units, integrated dishwasher, washing machine, fridge/freezer

Bedroom One

8' 4" max x 10' 3" max (2.54m max x 3.12m max)

Window to front, carpet underfoot, radiator

Bathroom

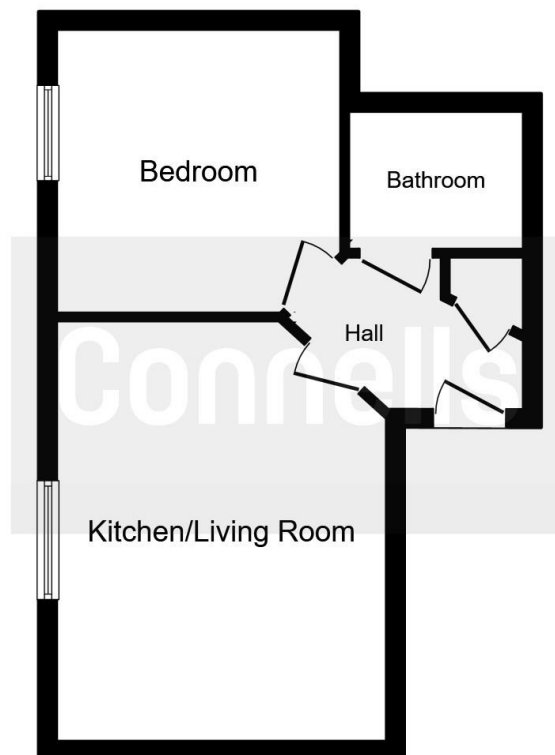
WC, WHB, bath/mixer with shower, part tiling, tiling underfoot, towel radiator

Parking

No parking







This floor plan is for illustrative purposes only. It is not drawn to scale. Any measurements, floor areas (including any total floor area), openings and orientation are approximate. No details are guaranteed, they cannot be relied upon for any purpose and they do not form part of any agreement. No liability is taken for any error, omission or misstatement. A party must rely upon its own inspection(s).
Plan produced for Connells. Powered by www.focalagent.com

To view this property please contact Connells on

T 01296 395 111
E aylesbury@connells.co.uk

2 Temple Street
AYLESBURY HP20 2RH

EPC Rating: C

Council Tax
Band: B

Service Charge:
1065.22

Ground Rent:
250.00

Tenure: Leasehold

view this property online connells.co.uk/Property/ALS312500

This is a Leasehold property with details as follows; Term of Lease 125 years from 01 Aug 2016. Should you require further information please contact the branch. Please Note additional fees could be incurred for items such as

1. MONEY LAUNDERING REGULATIONS Intending purchasers will be asked to produce identification documentation at a later stage and we would ask for your co-operation in order that there will be no delay in agreeing the sale. 2. These particulars do not constitute part or all of an offer or contract. 3. The measurements indicated are supplied for guidance only and as such must be considered incorrect. Potential buyers are advised to recheck measurements before committing to any expense. 4. We have not tested any apparatus, equipment, fixtures, fittings or services and it is in the buyers interest to check the working condition of any appliances.

Connells Residential is registered in England and Wales under company number 1489613, Registered Office is Cumbria House, 16-20 Hockliffe Street, Leighton Buzzard, Bedfordshire, LU7 1GN. VAT Registration Number is 500 2481 05.



See all our properties at www.connells.co.uk | www.rightmove.co.uk | www.zoopla.co.uk

Property Ref: ALS312500 - 0002