





Property Description

CONNELLS are happy to bring to the market this FIVE bedroom townhouse in the sought after location of BERRYFIELDS, offered with NO ONWARD CHAIN! With accommodation set over three floors, the property benefits from two bathrooms, off road parking and a garage.

On the ground floor you'll find laminate flooring underfoot throughout, an entrance hallway with stairs leading to first floor and an understairs cupboard for additional storage needs and a WC. Following that, a large reception room which leads through to the kitchen/diner by double doors. The Kitchen comes with fully integrated appliances as well as a double oven and ample space for a dining table. Patio doors lead to the rear garden of the property where you'll find patio and laid lawn along with a timber shed for extra storage.

Moving to the first floor, there are four bedrooms, two containing built in wardrobes and family bathroom which is fully tiled with tiling underfoot, wc, wash hand basin and bath/mixer with shower overhead. The master bedroom is located on the second floor of the home with a skylight window and an en-suite bathroom with a shower cubicle.

BERRYFIELDS is a sought-after area, particularly popular with families due to its close proximity to local schools, parks and nearby amenities.

Give CONNELLS a call to arrange a viewing!

Entrance Hall

Door to front, Laminate flooring, Understairs storage

Lounge

18' x 10' 8" (5.49m x 3.25m)

Window to front, Laminate underfoot, Radiator

Kitchen/Diner

12' 3" x 17' 9" (3.73m x 5.41m)

Patio doors to rear, Window to rear, Radiator, Wall and base units, Integrated dishwasher, washing machine and fridge freezer, Gas hob and Electric double oven

Landing

Carpet underfoot

Bedroom One

24' 1" x 14' 4" (7.34m x 4.37m)

Window to front, Skylight, Carpet underfoot, Radiator, Built in wardrobe

En-Suite

Skylight, WC, Wash hand basin, Vinyl underfoot, Shower cubicle

Bedroom Two

10' 10" x 10' 7" (3.30m x 3.23m)

Window to rear, Carpet underfoot, Radiator,
Built in wardrobe

Bedroom Three

14' 2" x 11' 1" (4.32m x 3.38m)

Window to front, Carpet underfoot, Radiator

Bedroom Four

12' 7" x 9' 2" (3.84m x 2.79m)

Window to rear, Carpet underfoot, Radiator

Bathroom

WC, Wash hand basin, fully tiled, tiling
underfoot, Bath/mixer with shower

Bedroom Five

9' 3" x 8' 1" (2.82m x 2.46m)

Window to front, Carpet underfoot, Radiator

Rear Garden

Patio, Laid lawn, Timber shed

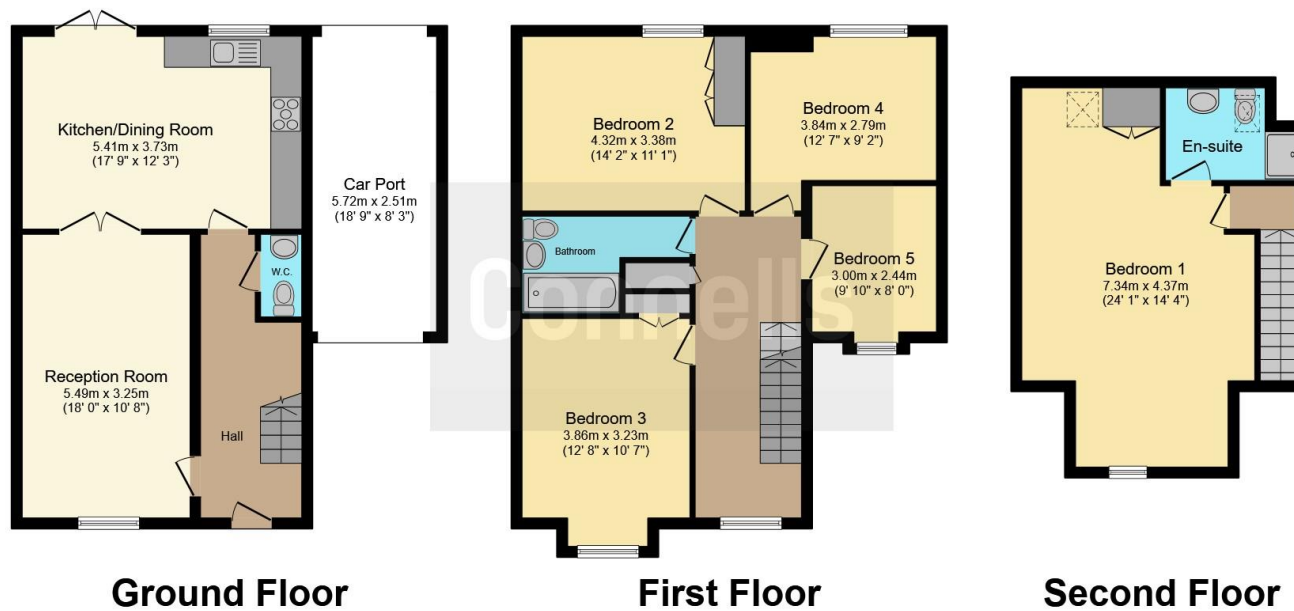
Parking

Carport and Driveway









Total floor area 151.8 m² (1,634 sq.ft.) approx

This floor plan is for illustrative purposes only. It is not drawn to scale. Any measurements, floor areas (including any total floor area), openings and orientation are approximate. No details are guaranteed, they cannot be relied upon for any purpose and they do not form part of any agreement. No liability is taken for any error, omission or misstatement. A party must rely upon its own inspection(s). Powered by www.focalagent.com

To view this property please contact Connells on

T 01296 395 111
E aylesbury@connells.co.uk

2 Temple Street
 AYLESBURY HP20 2RH

EPC Rating: Awaited

Tenure: Freehold

check out more properties at connells.co.uk



1. MONEY LAUNDERING REGULATIONS Intending purchasers will be asked to produce identification documentation at a later stage and we would ask for your co-operation in order that there will be no delay in agreeing the sale. 2. These particulars do not constitute part or all of an offer or contract. 3. The measurements indicated are supplied for guidance only and as such must be considered incorrect. Potential buyers are advised to recheck measurements before committing to any expense. 4. We have not tested any apparatus, equipment, fixtures, fittings or services and it is in the buyers interest to check the working condition of any appliances.

Connells Residential is registered in England and Wales under company number 1489613, Registered Office is Cumbria House, 16-20 Hockliffe Street, Leighton Buzzard, Bedfordshire, LU7 1GN. VAT Registration Number is 500 2481 05.

See all our properties at www.connells.co.uk | www.rightmove.co.uk | www.zoopla.co.uk

Property Ref: ALS312168 - 0003