





Property Description

Nestled in the highly sought-after area of Bedgrove, this beautifully designed four-bedroom semi-detached home offers the perfect blend of comfort, convenience, and contemporary living. Ideally located just a short stroll from Bedgrove Junior and Infant Schools, as well as an array of local shops, amenities, and scenic parkland, this home is perfect for families seeking a vibrant yet peaceful lifestyle.

Step inside to discover a welcoming entrance hall leading to a versatile study, a convenient downstairs W/C, and a spacious lounge - perfect for relaxing or entertaining. The heart of the home is the modern open-plan kitchen/dining area, complete with high-quality integrated appliances and a handy utility cupboard.

Upstairs, you'll find four generously sized double bedrooms, including a luxurious main bedroom with its own en-suite, plus a well-appointed family bathroom.

Outside, the enclosed rear garden is a larger than average size - ideal for outdoor dining and entertaining. The property also boasts a gated side entrance, a block-paved driveway with ample parking for multiple vehicles, and an integral garage equipped with an power and lighting.

Entrance Hall

Door to front
Laminate underfoot

Cloakroom

WC,
WHB,
Window to side
Radiator
Part tiling

Study

9' 1" max x 6' 8" max (2.77m max x 2.03m max)
Window to front
Carpet underfoot
Radiator

Lounge

16' 11" max x 10' 11" max (5.16m max x 3.33m max)
French doors to rear
Laminate flooring underfoot
Radiator

Kitchen

20' 4" max x 7' 10" max (6.20m max x 2.39m max)
French doors to rear
Window to rear and side
Tiling underfoot
Wall and base units
Gas hob and Electric double oven

Separate Pantry
Integrated DW and FF

Utility Room

6' 7" max x 2' 8" max (2.01m max x 0.81m max)

Bedroom One

14' 1" max x 8' 1" max (4.29m max x 2.46m max)

Window to rear
Carpet underfoot
Radiator
Built in wardrobe

Bedroom Two

11' 7" max x 11' 2" max (3.53m max x 3.40m max)

Window to front
Carpet underfoot
Radiator

Bedroom Three

11' 6" max x 8' 3" max (3.51m max x 2.51m max)

Window to front
Carpet underfoot
Radiator

Bedroom Four

8' 8" max x 8' 4" max (2.64m max x 2.54m max)

Window to rear
Carpet underfoot
Radiator

Bathroom

Window to side
Tiling underfoot
Part tiling
WC, WHB
Towel radiator
Bath/mixer with shower

Rear Garden

Patio
Large laid lawn
Enclosed fencing
Brick wall
Side access

Parking

Driveway

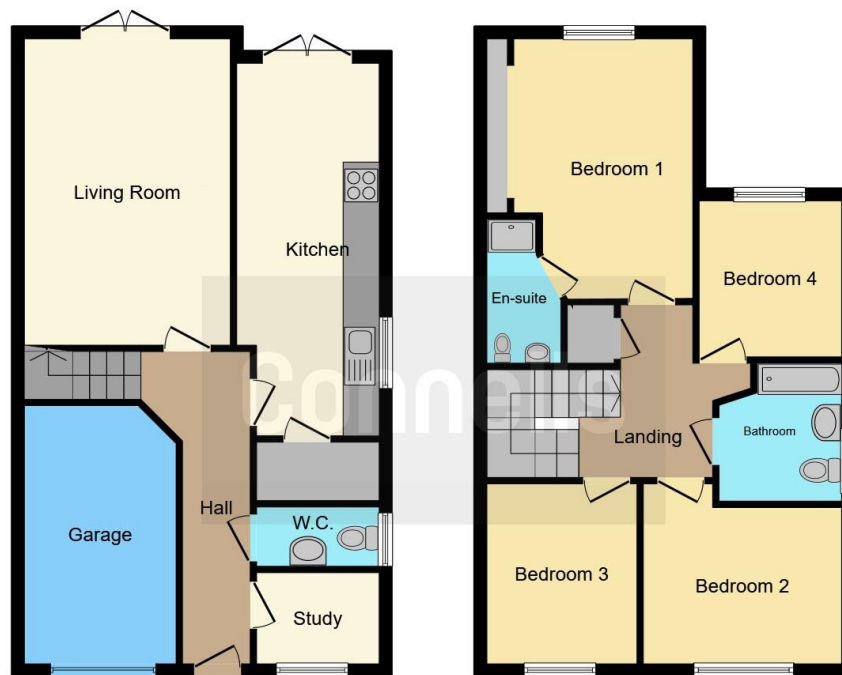
Garage

16' max x 9' 2" max (4.88m max x 2.79m max)
Up and over door
Power and lighting









Ground Floor

First Floor

This floor plan is for illustrative purposes only. It is not drawn to scale. Any measurements, floor areas (including any total floor area), openings and orientation are approximate. No details are guaranteed, they cannot be relied upon for any purpose and they do not form part of any agreement. No liability is taken for any error, omission or misstatement. A party must rely upon its own inspection(s). Powered by www.focalagent.com

To view this property please contact Connells on

T 01296 395 111
E aylesbury@connells.co.uk

2 Temple Street
 AYLESBURY HP20 2RH

EPC Rating: C

Tenure: Freehold

view this property online connells.co.uk/Property/ALS312035



1. MONEY LAUNDERING REGULATIONS Intending purchasers will be asked to produce identification documentation at a later stage and we would ask for your co-operation in order that there will be no delay in agreeing the sale. 2. These particulars do not constitute part or all of an offer or contract. 3. The measurements indicated are supplied for guidance only and as such must be considered incorrect. Potential buyers are advised to recheck measurements before committing to any expense. 4. We have not tested any apparatus, equipment, fixtures, fittings or services and it is in the buyers interest to check the working condition of any appliances.

Connells Residential is registered in England and Wales under company number 1489613, Registered Office is Cumbria House, 16-20 Hockliffe Street, Leighton Buzzard, Bedfordshire, LU7 1GN. VAT Registration Number is 500 2481 05.

See all our properties at www.connells.co.uk | www.rightmove.co.uk | www.zoopla.co.uk

Property Ref: ALS312035 - 0010