



Connells

Sloane House Cambridge Place
Aylesbury

Sloane House Cambridge Place Aylesbury HP20 2NP

for sale
£165,000



Property Description

CONNELLS are delighted to offer to the market this NO CHAIN immaculate and spacious one bedroom apartment located on the upper floor. Situated within walking distance to AYLESBURY TOWN CENTRE, benefiting to close proximity to the train station. Offering high specification throughout this apartment comes with an integrated modern fitted kitchen with open plan living room. The double bedroom is a generous size with built in wardrobes in the bedroom for additional storage needs, finishing with a three piece modern family bathroom

Get in touch with us to book a viewing!

Communal Entrance

Entrance Hall

Utility Cupboard

Boiler, plumbing for washing machine.

Lounge / Kitchen

18' 9" max x 10' 10" max (5.71m max x 3.30m max)

Window to front aspect, radiators, television point, telephone point.

Fitted kitchen comprised of wall and base units with work surfaces and tiling to complement, sink with drainer, electric oven and hob, integrated dishwasher & fridge/freezer.

Bedroom One

12' 3" x 8' 11" (3.73m x 2.72m)

Window to front aspect, built in wardrobe, radiator.

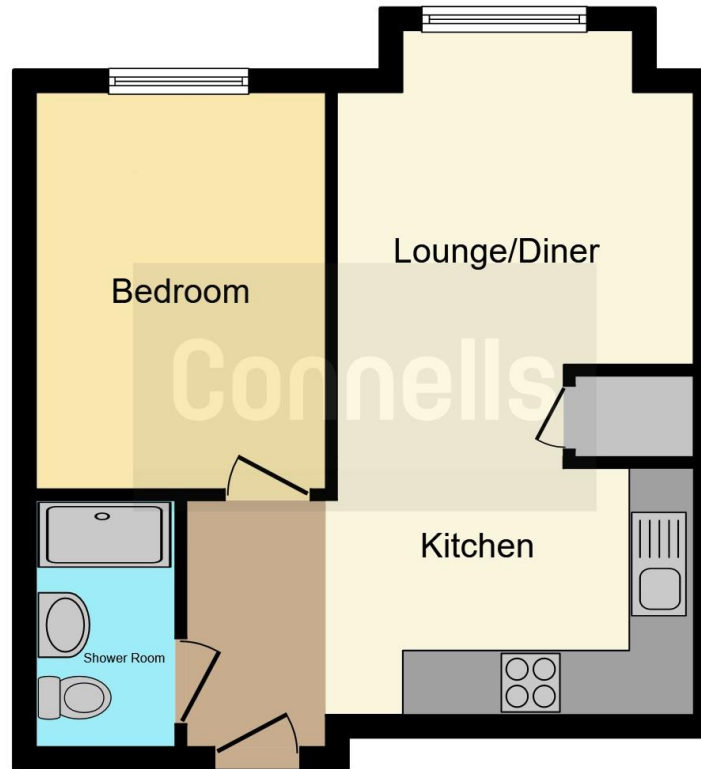
Bathroom

Shower cubicle, WC, wash hand basin, hand towel rail, shaving point.









This floor plan is for illustrative purposes only. It is not drawn to scale. Any measurements, floor areas (including any total floor area), openings and orientation are approximate. No details are guaranteed, they cannot be relied upon for any purpose and they do not form part of any agreement. No liability is taken for any error, omission or misstatement. A party must rely upon its own inspection(s). Powered by www.focalagent.com

To view this property please contact Connells on

T 01296 395 111
E aylesbury@connells.co.uk

2 Temple Street
 AYLESBURY HP20 2RH

EPC Rating: C

Tenure: Leasehold

view this property online connells.co.uk/Property/ALS312084

This is a Leasehold property with details as follows; Term of Lease 999 years from 01 Jan 2022. Should you require further information please contact the branch. Please Note additional fees could be incurred for items such as

1. MONEY LAUNDERING REGULATIONS Intending purchasers will be asked to produce identification documentation at a later stage and we would ask for your co-operation in order that there will be no delay in agreeing the sale. 2. These particulars do not constitute part or all of an offer or contract. 3. The measurements indicated are supplied for guidance only and as such must be considered incorrect. Potential buyers are advised to recheck measurements before committing to any expense. 4. We have not tested any apparatus, equipment, fixtures, fittings or services and it is in the buyers interest to check the working condition of any appliances.

Connells Residential is registered in England and Wales under company number 1489613, Registered Office is Cumbria House, 16-20 Hockliffe Street, Leighton Buzzard, Bedfordshire, LU7 1GN. VAT Registration Number is 500 2481 05.



See all our properties at www.connells.co.uk | www.rightmove.co.uk | www.zoopla.co.uk

Property Ref: ALS312084 - 0004