



Connells

Apollo Close
Aylesbury



Property Description

Connells are delighted to bring to the market this beautifully presented and larger than average, four bedroom detached family home.

Located in the popular Berryfeilds development which boasts multiple play parks, well maintained greenery, local shops, pharmacy, doctors surgery, two primary schools and Aylesbury vale academy secondary school within the development.

This stunning home comprises of-

Entrance hall, downstairs WC, living room, dinning room, spacious modern kitchen with intergrwated appliances, double french doors to a impressive large rear garden with side access to part converted garage and driveway.

To the first floor houses four bedrooms, ensuite to master bedroom and family bathroom.

Entrance Hall

Door to front, bespoke under stairs storage, Amtico flooring,

Cloakroom

wc, wash hand basin, partial tiling, radiator, Amtico flooring

Study

11' 8" x 8' 7" (3.56m x 2.62m)

Window to side and front, Amtico flooring, radiator

Lounge

14' 6" x 12' 8" (4.42m x 3.86m)

French doors to rear, Amtico flooring, radiator, bespoke entertainment system

Dining Room

10' 6" x 12' 7" (3.20m x 3.84m)

French doors to rear, Amtico flooring radiator

Kitchen

10' 8" x 15' 6" (3.25m x 4.72m)

Window to front, Amtico flooring, sink/drain, wall and base units, integrated fridge, dish washer, double electric oven, microwave and gas hob

Landing

Carpet underfoot, loft access and airing cupboard

Bedroom 1

16' 9" x 15' 3" (5.11m x 4.65m)

Window to front, carpet underfoot, radiator

Ensuite For Bedroom 1

WC, wash hand basin, towel radiator, shower cubical, fully tiled

Bedroom 2

13' 1" x 10' 9" (3.99m x 3.28m)

Window to front, carpet underfoot, radiator

Bedroom 3

15' 9" x 11' (4.80m x 3.35m)

Window to rear, storage, towel rail, tiling underfoot, fully tiled , bath/mixer, shower, wash hand basin, wc

Bedroom 4

12' 4" x 8' 3" (3.76m x 2.51m)

Window to rear with carpet underfoot

Garage

Up and over door, power, lighting space for washing machine and dryer. Part converted with door to rear, laminated flooring and radiator.

Parking

Driveway to front for multiple vehicles

Front Garden

Large laid to lawn area

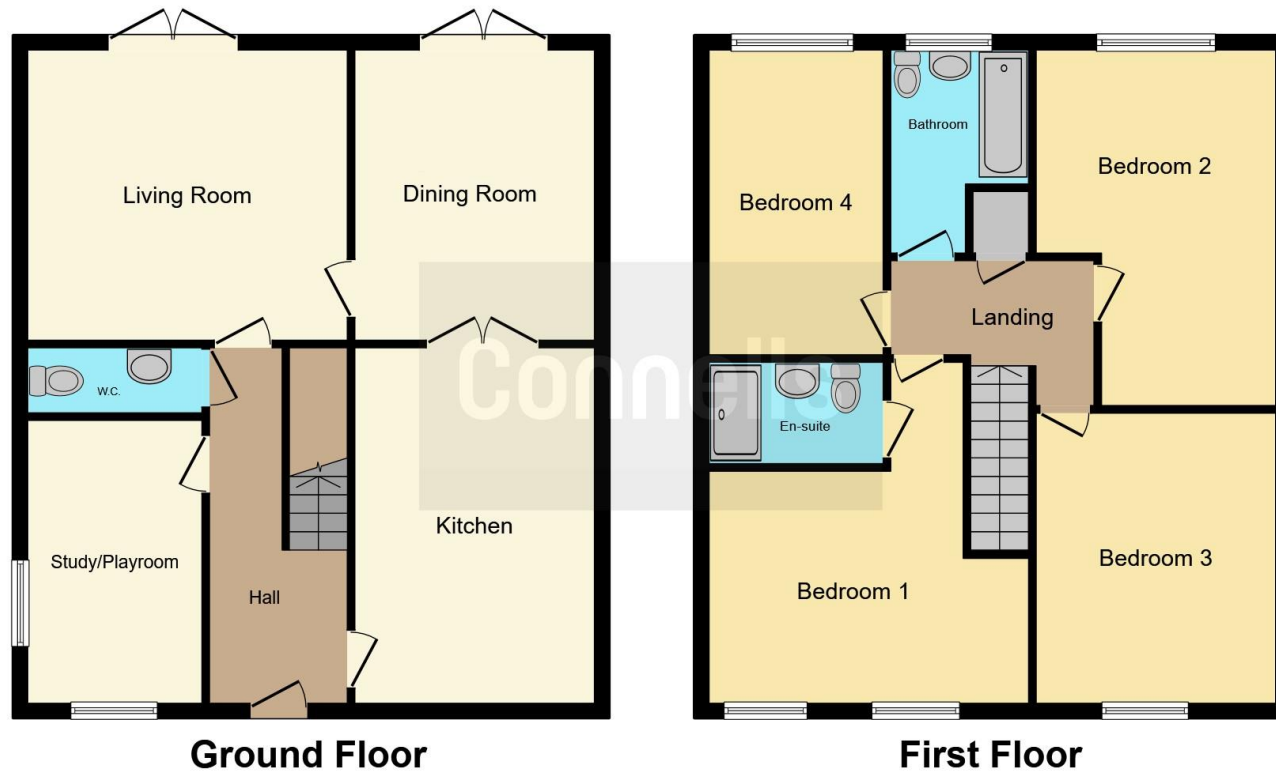
Rear Garden

Patio leading to large lawn area. Covered seating area leading to shed with power and light









This floor plan is for illustrative purposes only. It is not drawn to scale. Any measurements, floor areas (including any total floor area), openings and orientation are approximate. No details are guaranteed, they cannot be relied upon for any purpose and they do not form part of any agreement. No liability is taken for any error, omission or misstatement. A party must rely upon its own inspection(s). Powered by www.focalagent.com

To view this property please contact Connells on

T 01296 395 111
E aylesbury@connells.co.uk

2 Temple Street
 AYLESBURY HP20 2RH

EPC Rating: B

Tenure: Freehold

view this property online connells.co.uk/Property/ALS311707



1. MONEY LAUNDERING REGULATIONS Intending purchasers will be asked to produce identification documentation at a later stage and we would ask for your co-operation in order that there will be no delay in agreeing the sale. 2. These particulars do not constitute part or all of an offer or contract. 3. The measurements indicated are supplied for guidance only and as such must be considered incorrect. Potential buyers are advised to recheck measurements before committing to any expense. 4. We have not tested any apparatus, equipment, fixtures, fittings or services and it is in the buyers interest to check the working condition of any appliances.

Connells Residential is registered in England and Wales under company number 1489613, Registered Office is Cumbria House, 16-20 Hockliffe Street, Leighton Buzzard, Bedfordshire, LU7 1GN. VAT Registration Number is 500 2481 05.

See all our properties at www.connells.co.uk | www.rightmove.co.uk | www.zoopla.co.uk

Property Ref: ALS311707 - 0008