



Connells

Redcliffe Walk
Aylesbury



Property Description

Connells are delighted to bring to the market this lovely, three bedroom, end of terraced family home. Located close to Aylesbury's town centre.

This three bedroom end of terraced home is situated within a walk facing directly onto greenery. There is lawn to the front with patio space and a rear driveway parking.

To the inside of the property there is an entrance porch, entrance hall, well presented living room, kitchen and utility room. To the first floor there are three spacious bedrooms, family bathroom and loft access.

Entrance Porch

Door to front, window to side and front, laminated flooring

Entrance Hall

Door to front, laminated flooring and laminated flooring

Living Room

21' 5 max x 9' 8 ax (6.40m 5 max x 2.74m 8 ax)

Window to front, doors to side, wood effect flooring, radiators (two).

Kitchen

10' 4 max x 10' 7 max (3.05m 4 max x

3.05m 7 max)

Window to the side, tiling underfoot, wall and base units. Space for washing machine, electric hob and oven. Fridge/freezer. Part tiling door to utility

Utility Room

6' 92 max x 5' 42 max (1.83m 92 max x 1.52m 42 max)

Boiler, vinyl underfoot, power and lightning

Landing

Window to the side, carpet, radiator, loft access

Bedroom One

10' 1 x 12' 9 (3.05m 1 x 3.66m 9)

Window to front, vinyl flooring and a radiator

Bedroom Two

12' 23 max x 8' 37 max (3.66m 23 max x 2.44m 37 max)

(Measurements into cove)

Window to side, laminated flooring and radiator

Bedroom Three

7' 05 max x 10' 2 (2.13m 05 max x 3.05m 2)

Window to rear, vinyl flooring, radiator

Bathroom

Windows to side (two), tiling underfoot, bath/mixer, electric shower towel rail, part tiling, WC, wash hand basin vanity units

Front Garden

Patio pathway and laid lawn

Side Garden One

Enclosed fencing, mature planting, patio, pathway leading to garage, front and rear access

Side Garden Two

Enclosed fencing, fencing, laid lawn, mature shrubbery, borders and patio

Parking

Driveway to rear

Garage

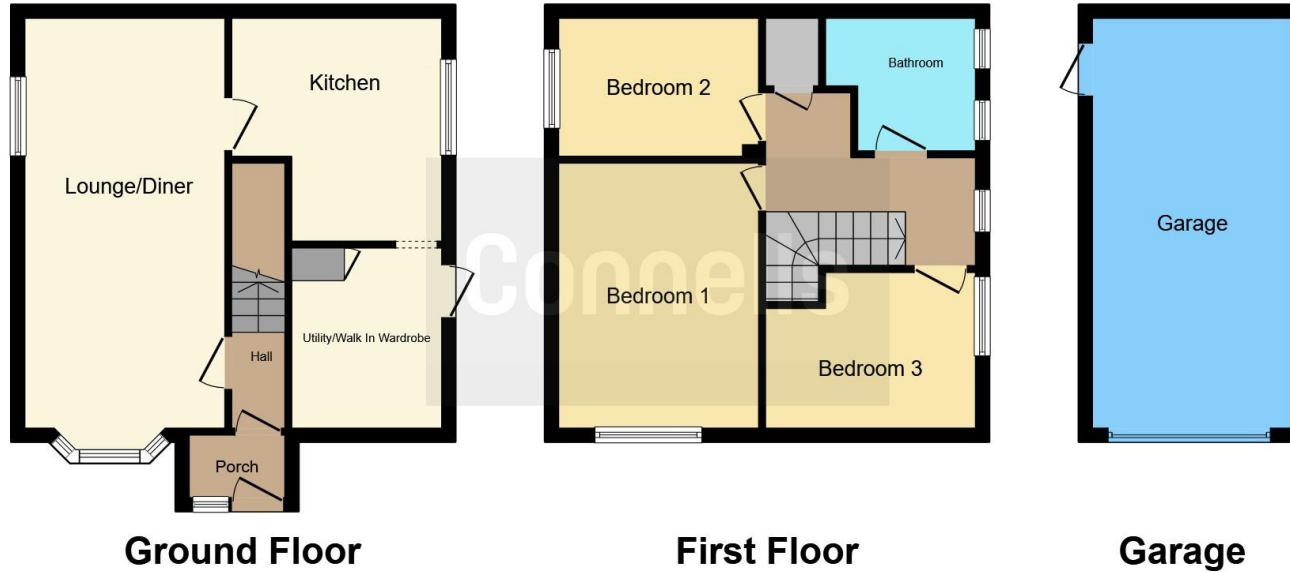
20' 47 max x 9' 55 max (6.10m 47 max x 2.74m 55 max)

Up and over door window to side, door to side, power and lighting









This floor plan is for illustrative purposes only. It is not drawn to scale. Any measurements, floor areas (including any total floor area), openings and orientation are approximate. No details are guaranteed, they cannot be relied upon for any purpose and they do not form part of any agreement. No liability is taken for any error, omission or misstatement. A party must rely upon its own inspection(s). Powered by www.focalagent.com

To view this property please contact Connells on

T 01296 395 111
E aylesbury@connells.co.uk

2 Temple Street
 AYLESBURY HP20 2RH

EPC Rating: D

view this property online connells.co.uk/Property/ALS311810

Tenure: Freehold



1. MONEY LAUNDERING REGULATIONS Intending purchasers will be asked to produce identification documentation at a later stage and we would ask for your co-operation in order that there will be no delay in agreeing the sale. 2. These particulars do not constitute part or all of an offer or contract. 3. The measurements indicated are supplied for guidance only and as such must be considered incorrect. Potential buyers are advised to recheck measurements before committing to any expense. 4. We have not tested any apparatus, equipment, fixtures, fittings or services and it is in the buyers interest to check the working condition of any appliances.

Connells Residential is registered in England and Wales under company number 1489613, Registered Office is Cumbria House, 16-20 Hockliffe Street, Leighton Buzzard, Bedfordshire, LU7 1GN. VAT Registration Number is 500 2481 05.

See all our properties at www.connells.co.uk | www.rightmove.co.uk | www.zoopla.co.uk

Property Ref: ALS311810 - 0004