



Connells

Aiston Place
Aylesbury



Property Description

Connells are pleased to present this exceptionally well-maintained two-bedroom end-terrace home, located in the highly sought-after Cleveland Park area. The property boasts an immaculate condition throughout.

Upon entering, you are greeted by a recently renovated entrance hall that leads into a modern kitchen, designed to a high standard. The bright and airy lounge features an elegant electric fireplace, creating a warm and inviting atmosphere. The rear conservatory, fitted with both power and heating, offers a versatile space that can be enjoyed year-round.

The home comprises two spacious double bedrooms both of which include built-in wardrobes, providing ample storage. The bedrooms share access to a contemporary family bathroom. This well presented home that is both stylish and functional making it a perfect choice for those seeking a move-in-ready home.

Entrance Hall

Door to front, carpet, upstairs cupboard

Living Room/Diner

13' 2" x 12' 7" (4.01m x 3.84m)

Window to rear, single door to conservatory,

electric fireplace radiator, carpet

Kitchen

10' 1" x 5' 9" (3.07m x 1.75m)

Window to front, wall and base units, granite work surfaces, partial tiling, gas hob and electric oven, space for a washing machine and dishwasher, space for fridge/freezer, boiler radiator

Conservatory

10' 5" x 6' 5" (3.17m x 1.96m)

UPVC and part brick, window to front rear and side, wall light, laminated flooring, french doors to garden

Landing

Carpet, loft access

Bedroom One

12' 12 x 9' 2" (3.66m 12 x 2.79m)

Window to rear, carpet, radiator

Bedroom Two

8' 47 x 7' 47 (2.44m 47 x 2.13m 47)

Window to front, carpet, radiator, built in wardrobe and airing cupboard

Bathroom

WC, wash hand basin, bath and shower, shaving point, fully tiled, window to side

Front Garden

Laid lawn, concrete pathway to front door, large laid lawn patch offering potential to convert to driveway

Rear Garden

Mainly laid lawn, patio area, access to garage and front

Parking

Driveway and garage

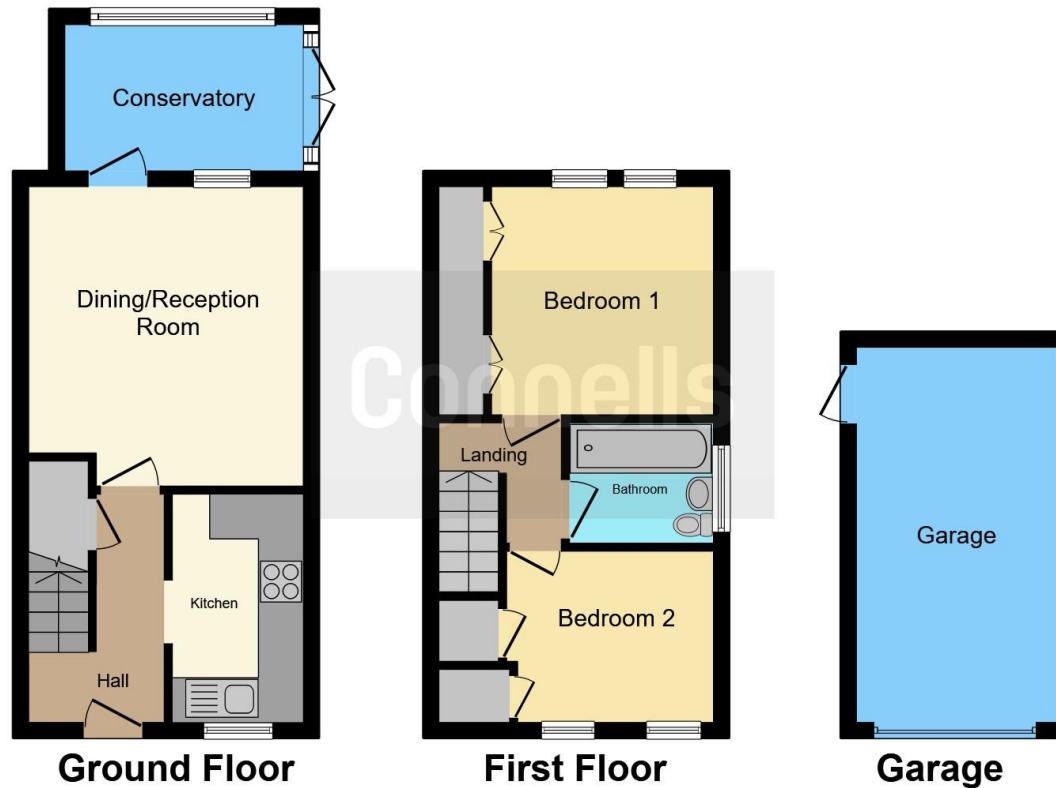
Garage

Up and over door, door to side, power and lighting









This floor plan is for illustrative purposes only. It is not drawn to scale. Any measurements, floor areas (including any total floor area), openings and orientation are approximate. No details are guaranteed, they cannot be relied upon for any purpose and they do not form part of any agreement. No liability is taken for any error, omission or misstatement. A party must rely upon its own inspection(s). Powered by www.focalagent.com

To view this property please contact Connells on

T 01296 395 111
E aylesbury@connells.co.uk

2 Temple Street
 AYLESBURY HP20 2RH

EPC Rating: D

view this property online connells.co.uk/Property/ALS311350

Tenure: Freehold



1. MONEY LAUNDERING REGULATIONS Intending purchasers will be asked to produce identification documentation at a later stage and we would ask for your co-operation in order that there will be no delay in agreeing the sale. 2. These particulars do not constitute part or all of an offer or contract. 3. The measurements indicated are supplied for guidance only and as such must be considered incorrect. Potential buyers are advised to recheck measurements before committing to any expense. 4. We have not tested any apparatus, equipment, fixtures, fittings or services and it is in the buyers interest to check the working condition of any appliances.

Connells Residential is registered in England and Wales under company number 1489613, Registered Office is Cumbria House, 16-20 Hockliffe Street, Leighton Buzzard, Bedfordshire, LU7 1GN. VAT Registration Number is 500 2481 05.

See all our properties at www.connells.co.uk | www.rightmove.co.uk | www.zoopla.co.uk

Property Ref: ALS311350 - 0013