



Connells

Clifton Green
Aylesbury



Property Description

CONNELLS are delighted to welcome to the market this STUNNING & RECENTLY RENOVATED three bedroom semi-detached family home situated in front of the green offering ideal space throughout and benefiting from modernisation throughout recently.

This WONDERFUL property comprises of:

Generous entrance hall, well decorated open-plan lounge / diner with bay window to front and French doors to rear, well appointed modern and stylish kitchen, large utility space to the side fitted with power and lighting, three good size bedrooms all with access to a well presented family bathroom.

To the rear of the property is a well landscaped large garden ideal for summer evenings and hosting, to the front of the property is a well maintained front garden making for a great curb appeal!

Internal viewing of this BEAUTIFUL home is highly recommended.

Entrance Hall

Door to the front, radiator, wood effect flooring

Living Room / Diner

25' 91 x 10' 90 (7.62m 91 x 3.05m 90)

Bay window to the front, radiator, laminated flooring, french doors to rear.

Kitchen

10' 18 x 8' 79 (3.05m 18 x 2.44m 79)

Window to the rear, laminated flooring, sink/drain, radiator, partial tiling, gas hob and electric oven. Solid oak work tops

Utility Room

12' 12 x 8' 64 (3.66m 12 x 2.44m 64)

Door to front, space for a fridge , washing machine, carpet

Bedroom One

11' 04 x 11' 43 (3.35m 04 x 3.35m 43)

(Measurements into cove)

Window to front, carpet and radiator

Bedroom Two

11' 08 x 11' 30 (3.35m 08 x 3.35m 30)

(Measurements into cove)

Window to rear, carpet and radiator

Bedroom Three

8' 04 x 6' 39 (2.44m 04 x 1.83m 39)

Window to front, carpet and radiator

Bathroom

Window to the side and rear, VT underfoot, bath and mixer with shower, YWCA, wash hand basin, fully tiled storage cupboard

Loft Space

Part boarded

Front Garden

Laid lawn, flower beds

Rear Garden

Pebble patio area, laid lawn, mature flower beds, rear shingle sun trap

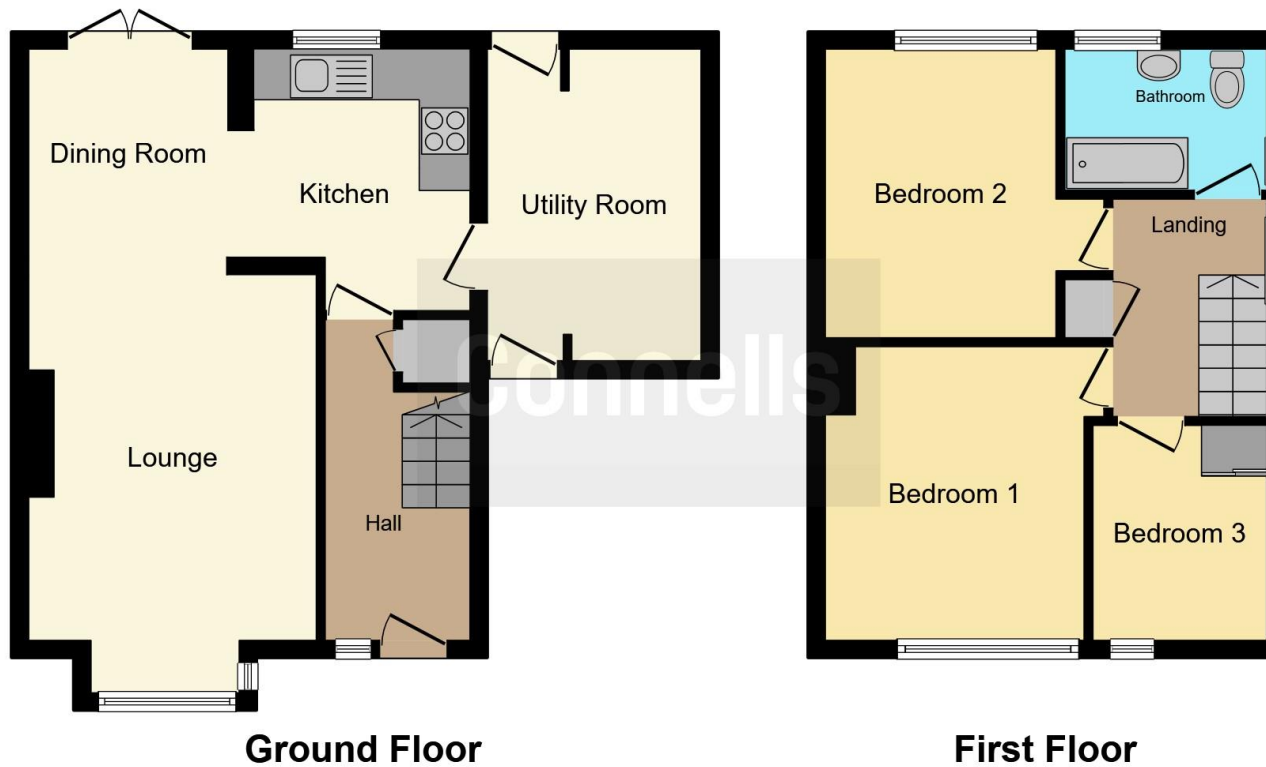
Parking

On street









This floor plan is for illustrative purposes only. It is not drawn to scale. Any measurements, floor areas (including any total floor area), openings and orientation are approximate. No details are guaranteed, they cannot be relied upon for any purpose and they do not form part of any agreement. No liability is taken for any error, omission or misstatement. A party must rely upon its own inspection(s). Powered by www.focalagent.com

To view this property please contact Connells on

T 01296 395 111
E aylesbury@connells.co.uk

2 Temple Street
 AYLESBURY HP20 2RH

EPC Rating: C

view this property online connells.co.uk/Property/ALS311783

Tenure: Freehold



1. MONEY LAUNDERING REGULATIONS Intending purchasers will be asked to produce identification documentation at a later stage and we would ask for your co-operation in order that there will be no delay in agreeing the sale. 2. These particulars do not constitute part or all of an offer or contract. 3. The measurements indicated are supplied for guidance only and as such must be considered incorrect. Potential buyers are advised to recheck measurements before committing to any expense. 4. We have not tested any apparatus, equipment, fixtures, fittings or services and it is in the buyers interest to check the working condition of any appliances.

Connells Residential is registered in England and Wales under company number 1489613, Registered Office is Cumbria House, 16-20 Hockliffe Street, Leighton Buzzard, Bedfordshire, LU7 1GN. VAT Registration Number is 500 2481 05.

See all our properties at www.connells.co.uk | www.rightmove.co.uk | www.zoopla.co.uk

Property Ref: ALS311783 - 0007