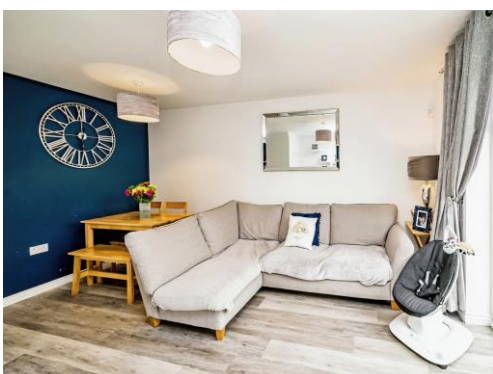




Not for marketing purposes INTERNAL USE ONLY

Apollo Close  
Aylesbury





## Property Description

CONNELLS are delighted to welcome to this market this beautifully presented and IMMACULATE two double bedroom SEMI-DETACHED home. Situated in the ever-popular Berryfields development. Benefiting from a LARGER THAN AVERAGE landscaped rear garden, EN-SUITE TO MASTER and OFF STREET PARKING.

This wonderful home comprises of:

Entrance hall, modern fitted kitchen with integrated appliances, downstairs cloakroom, bright and airy rear lounge, two double bedrooms with en-suite to master and built in storage to bedroom two both with access to a modern family bathroom.

To the front of the property is allocated parking and to the rear of the property is a generous rear garden benefiting from recent landscaping and offering large laid lawn with rear suntrap decking area.

Internal viewing is highly recommended.

## Entrance Hall

Door to front, luxury vinyl tiles flooring, radiator

## Cloakroom

Window to front, luxury vinyl tiles flooring, wash hand basin

## Kitchen

10' max x 6' 1" max ( 3.05m max x 1.85m max )

Window to front, luxury vinyl tiled flooring, gas hob and electric hob and electric oven, infinity fridge/freezer, washer/dryer, dishwasher, sink/drainer.

## Living Room/Diner

15' max x 13' 1" max ( 4.57m max x 3.99m max )

French doors to rear, luxury vinyl tiled flooring, radiator,

## Landing

Carpet and loft access

## Bedroom One

10' max x 9' 10" max ( 3.05m max x 3.00m max )

Window to rear, carpet, radiator, one tv and internet port

## Bedroom One En Suite

vinyl flooring, YWCA, wash hand basin, shower cubicle, radiator, part tiled

## Bedroom Two

8' max x 13' max ( 2.44m max x 3.96m max )

Window to front, carpet, radiator, airing cupboard, Internet and aerial points

## Bathroom

YWCA, wash hand basin, vinyl flooring, radiator, bath/mixer, shower, partial tiling

## Rear Garden

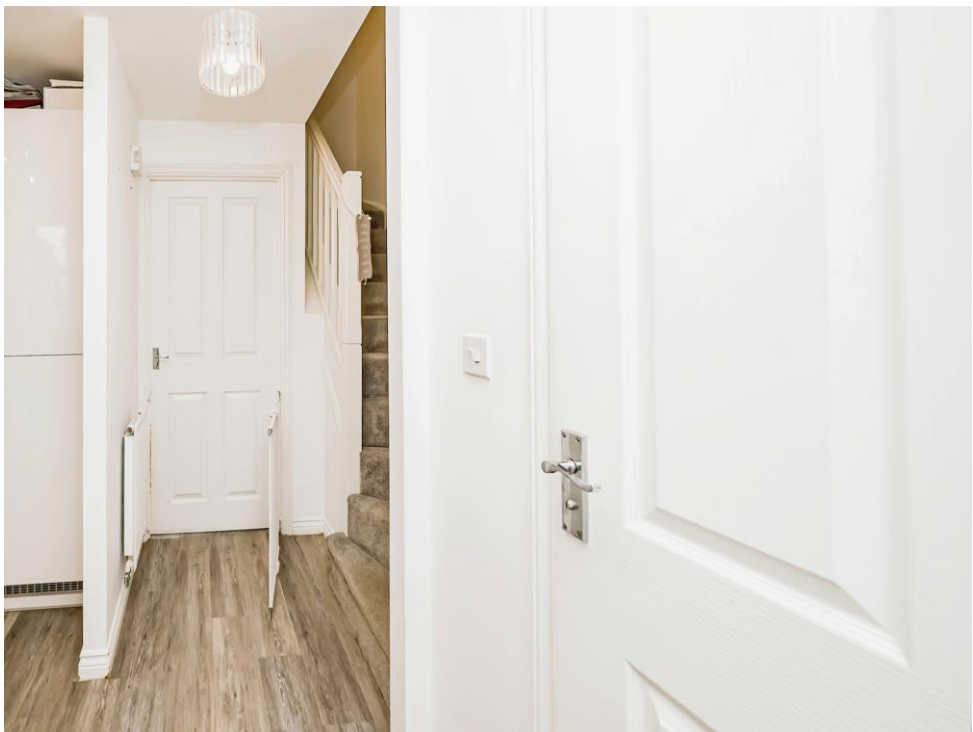
Patio, laid lawn, decking to rear

## Parking

Allocated



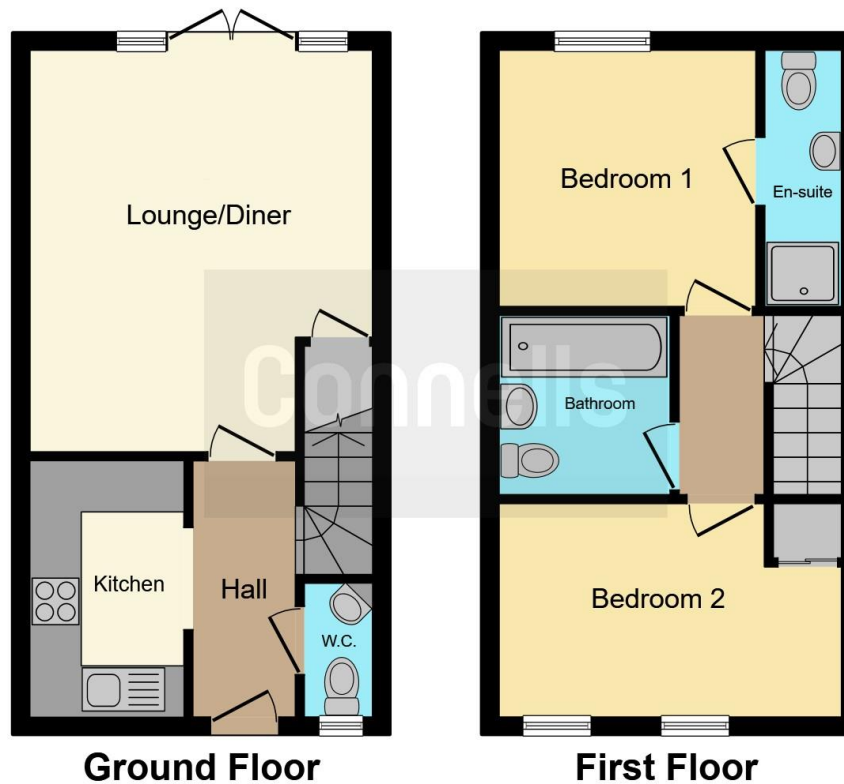












This floor plan is for illustrative purposes only. It is not drawn to scale. Any measurements, floor areas (including any total floor area), openings and orientation are approximate. No details are guaranteed, they cannot be relied upon for any purpose and they do not form part of any agreement. No liability is taken for any error, omission or misstatement. A party must rely upon its own inspection(s). Powered by [www.focalagent.com](http://www.focalagent.com)

To view this property please contact Connells on

**T 01296 395 111**  
**E aylesbury@connells.co.uk**

2 Temple Street  
 AYLESBURY HP20 2RH

**EPC Rating: C**

Tenure: Freehold

**check out more properties at [connells.co.uk](http://connells.co.uk)**



1. MONEY LAUNDERING REGULATIONS Intending purchasers will be asked to produce identification documentation at a later stage and we would ask for your co-operation in order that there will be no delay in agreeing the sale. 2. These particulars do not constitute part or all of an offer or contract. 3. The measurements indicated are supplied for guidance only and as such must be considered incorrect. Potential buyers are advised to recheck measurements before committing to any expense. 4. We have not tested any apparatus, equipment, fixtures, fittings or services and it is in the buyers interest to check the working condition of any appliances.

Connells Residential is registered in England and Wales under company number 1489613, Registered Office is Cumbria House, 16-20 Hockliffe Street, Leighton Buzzard, Bedfordshire, LU7 1GN. VAT Registration Number is 500 2481 05.

**See all our properties at [www.connells.co.uk](http://www.connells.co.uk) | [www.rightmove.co.uk](http://www.rightmove.co.uk) | [www.zoopla.co.uk](http://www.zoopla.co.uk)**

Property Ref: ALS311737 - 0009