



Connells

Armstrongs Fields
Broughton Aylesbury



Property Description

****NO UPPER CHAIN**** Connells are delighted to bring to the market this modern one bedroom coach house set in the desirable area of the Kingsbrook development.

This incredibly spacious property consists of an open plan lounge/diner, fully fitted kitchen with integrated appliances, two large storage cupboards, bedroom and bathroom. Outside there is a carport parking bay and a further storage cupboard. Viewing comes highly recommended on this well presented modern home.

Kingsbrook is set within beautiful open spaces yet is close to the town centre of Aylesbury. That has a range of shops/restaurants. With the bus station and the main line train station in the town centre.

This property boasts of a spacious living room, with rooms well maintained throughout the property. With plenty of storage with the property.

Entance Hall

Door to front, carpet

Living Room

21' 8" x 12' 70 (6.60m x 3.66m 70)

Windows to front (three), vinyl flooring, radiator

Kitchen

8' 92 x 12' 70 (2.44m 92 x 3.66m 70)

Window to rear, vinyl flooring, wall and base units, gas hob, electric oven, boiler and sink/drainer

Landing

Window to rear, carpet, loft space

Bedroom One

19' 14 x 10' 93 (5.79m 14 x 3.05m 93)

Window to rear, and front, carpet and radiator

Bathroom

Window to rear, part tiling, vinyl flooring bath/mixer and shower, radiator, shaving point

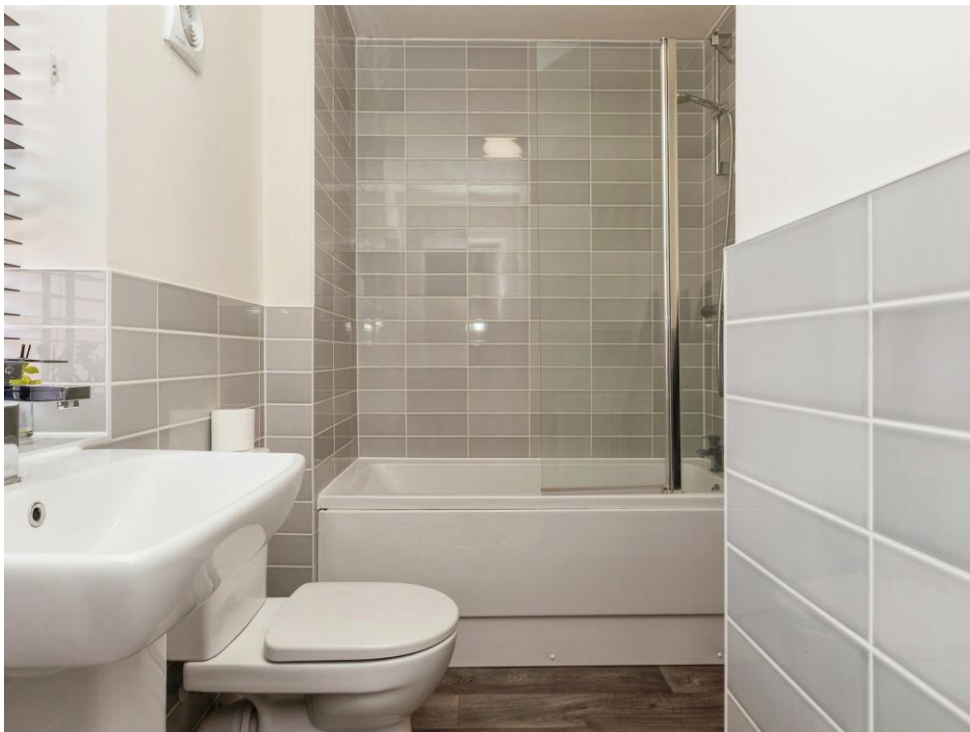
Rear Garden

Lawn

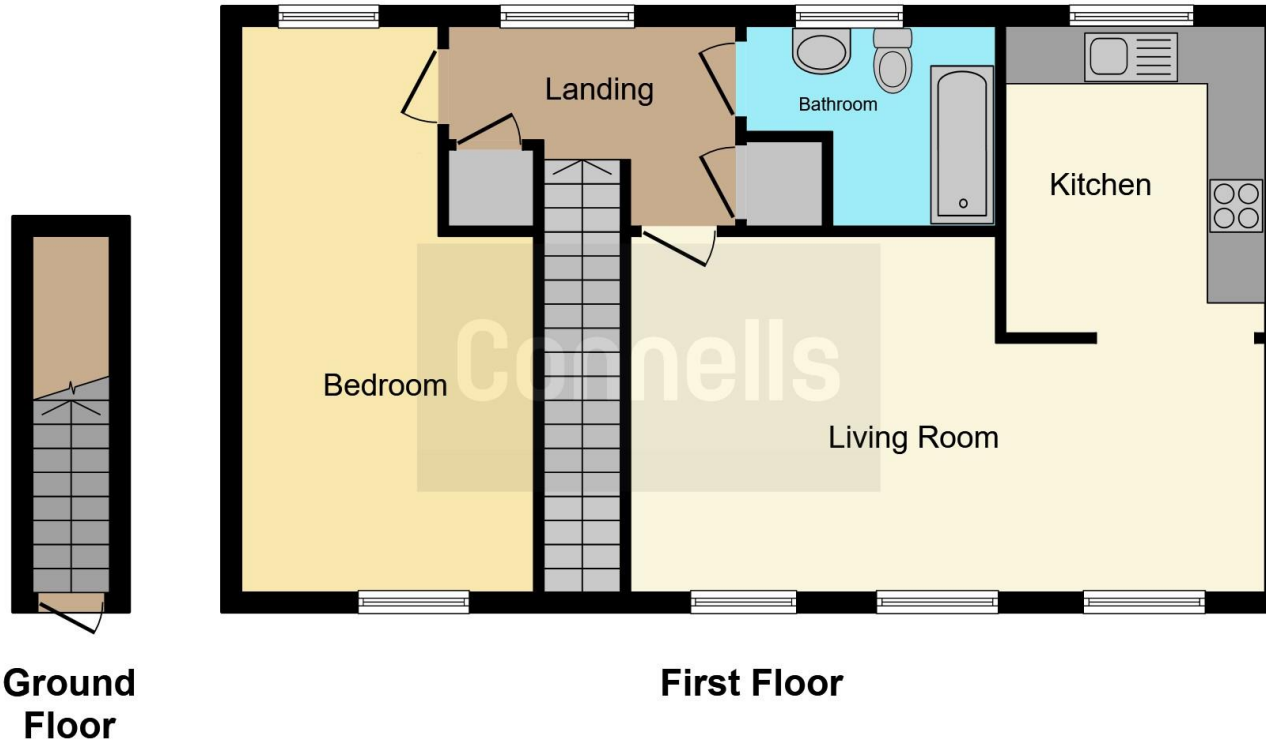
Parking

Carport









This floor plan is for illustrative purposes only. It is not drawn to scale. Any measurements, floor areas (including any total floor area), openings and orientation are approximate. No details are guaranteed, they cannot be relied upon for any purpose and they do not form part of any agreement. No liability is taken for any error, omission or misstatement. A party must rely upon its own inspection(s). Powered by www.focalagent.com

To view this property please contact Connells on

T 01296 395 111

E aylesbury@connells.co.uk

2 Temple Street
AYLESBURY HP20 2RH

EPC Rating: B

Tenure: Freehold

[check out more properties at connells.co.uk](http://connells.co.uk)



1. MONEY LAUNDERING REGULATIONS Intending purchasers will be asked to produce identification documentation at a later stage and we would ask for your co-operation in order that there will be no delay in agreeing the sale. 2. These particulars do not constitute part or all of an offer or contract. 3. The measurements indicated are supplied for guidance only and as such must be considered incorrect. Potential buyers are advised to recheck measurements before committing to any expense. 4. We have not tested any apparatus, equipment, fixtures, fittings or services and it is in the buyers interest to check the working condition of any appliances.

Connells Residential is registered in England and Wales under company number 1489613, Registered Office is Cumbria House, 16-20 Hockliffe Street, Leighton Buzzard, Bedfordshire, LU7 1GN. VAT Registration Number is 500 2481 05.

See all our properties at www.connells.co.uk | www.rightmove.co.uk | www.zoopla.co.uk

Property Ref: ALS311754 - 0004