

for sale

£350,000



Frederick Street Waddesdon Aylesbury HP18 0LX

This beautifully presented Victorian cottage located in the sought after village of Waddesdon. Offering two DOUBLE bedrooms, two reception rooms, kitchen, bathroom and a well maintained rear garden and off street parking. Local schools within walking distance.

Frederick Street Waddesdon Aylesbury HP18 0LX

Lounge

11' 9" x 9' 9" (3.58m x 2.97m)

Door to front, feature fireplace, radiator, hardwood flooring

hand basin, wc, radiator

Dinning Room

11' 9" x 10' 3" (3.58m x 3.12m)

Window to rear, tiling underfoot, feature fireplace and radiator

Kitchen

12' x 6' 4" (3.66m x 1.93m)

Window to side, wall base units, part tiling space for washing machine, dishwasher, sink/drainer, gas hob and electric oven

Bedroom 1

11' 9" x 11' 9" (3.58m x 3.58m)

Window to front, hardwood flooring, radiator

Bedroom 2

11' 9" x 7' 8" (3.58m x 2.34m)

Window to rear, hardwood flooring, radiator, wardrobe space

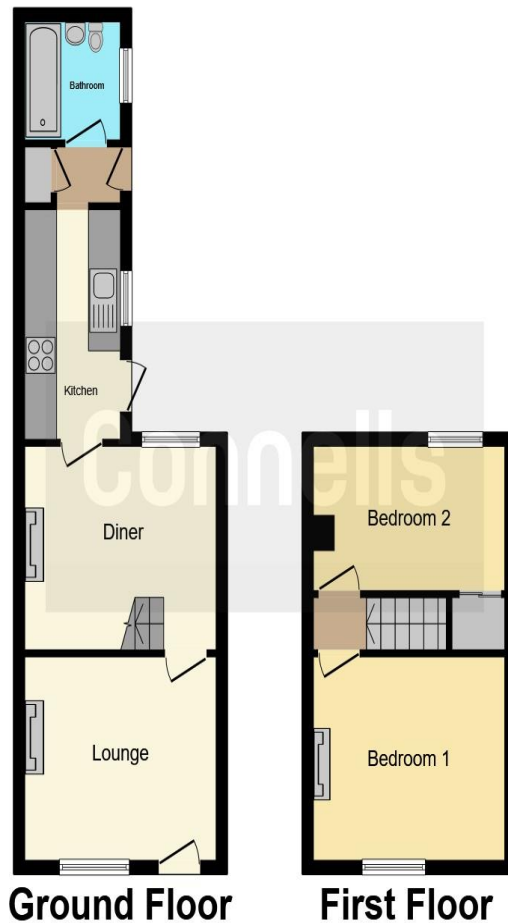
Bathroom

Window to side, laminated flooring, bath/mixer, shower, wash









This floor plan is for illustrative purposes only. It is not drawn to scale. Any measurements, floor areas (including any total floor area), openings and orientation are approximate. No details are guaranteed, they cannot be relied upon for any purpose and they do not form part of any agreement. No liability is taken for any error, omission or misstatement. A party must rely upon its own inspection(s). Powered by www.focalagent.com

To view this property please contact Connells on

T 01296 395 111
E aylesbury@connells.co.uk

2 Temple Street
AYLESBURY HP20 2RH

Property Ref: ALS311711 - 0006

Tenure: Freehold

EPC Rating: D

view this property online connells.co.uk/Property/ALS311711

1. MONEY LAUNDERING REGULATIONS Intending purchasers will be asked to produce identification documentation at a later stage and we would ask for your co-operation in order that there will be no delay in agreeing the sale. 2. These particulars do not constitute part or all of an offer or contract. 3. The measurements indicated are supplied for guidance only and as such must be considered incorrect. Potential buyers are advised to recheck measurements before committing to any expense. 4. We have not tested any apparatus, equipment, fixtures, fittings or services and it is in the buyers interest to check the working condition of any appliances.

Connells Residential is registered in England and Wales under company number 1489613, Registered Office is Cumbria House, 16-20 Hockliffe Street, Leighton Buzzard, Bedfordshire, LU7 1GN. VAT Registration Number is 500 2481 05.

see all our properties at www.connells.co.uk | www.rightmove.co.uk | www.zoopla.co.uk