



Connells
connells.co.uk 01296 395 111
FOR SALE

Connells

Ossulbury Lane
AYLESBURY



Property Description

CONNELLS are very pleased to bring to the market this spacious four bedroom detached house in the sought after development of Buckingham Park, Aylesbury. The property itself consists of a kitchen/diner, utility, living room, downstairs WC, four double bedrooms, family bathroom and an en-suite. Outside there is an enclosed rear garden, single garage and driveway parking for two vehicles. Viewing comes highly recommended on this fantastic family home.

Entrance Hall

Door to front, under stair storage, tiling underfoot

Cloak Room

WC, wash hand basin, radiator, extraction fan, tiling underfoot

Lounge

11' 4" max x 19' 8" max (3.45m max x 5.99m max)

Window to side and front, french doors to rear x two radiators, laminated flooring underfoot

Kitchen/Diner

11' 8" max x 10' 8" max (3.56m max x 3.25m max)

Window to front, and side, wall and base units, sink/drainer, integrated gas hob and electric oven, fridge/freezer, dishwasher, porcelain tiled floor

Utility Room

6' 5" max x 5' 1" max (1.96m max x 1.55m max)

Wall and base units, porcelain tiled floor underneath, door to garden

Landing

Radiator, access to loft space, door to airing cupboard

Bedroom 1

11' 7" max x 11' 2" max (3.53m max x 3.40m max)

Bedroom 1 Ensuite

Window to rear, wc, wash hand basin, heated towel radiator, double shower cubical, fully tiled

Bedroom 2

11' 10" max x 9' 9" max (3.61m max x 2.97m max)

Window to rear, carpet, radiator

Bedroom 3

10' max x 9' 9" max (3.05m max x 2.97m max)

Window to front, carpet and radiator

Bedroom 4

9' 11" x 8' 3" (3.02m x 2.51m)

Window to front, carpet and radiator

Bathroom

Window to front, heated towel radiator, wc, wash hand basin, bath with shower, fully tiled

Front Garden

Picket fencing surrounding laid lawn and pathway

Rear Garden

Mainly laid to lawn with patio, fully enclosed, raised decking to right hand side

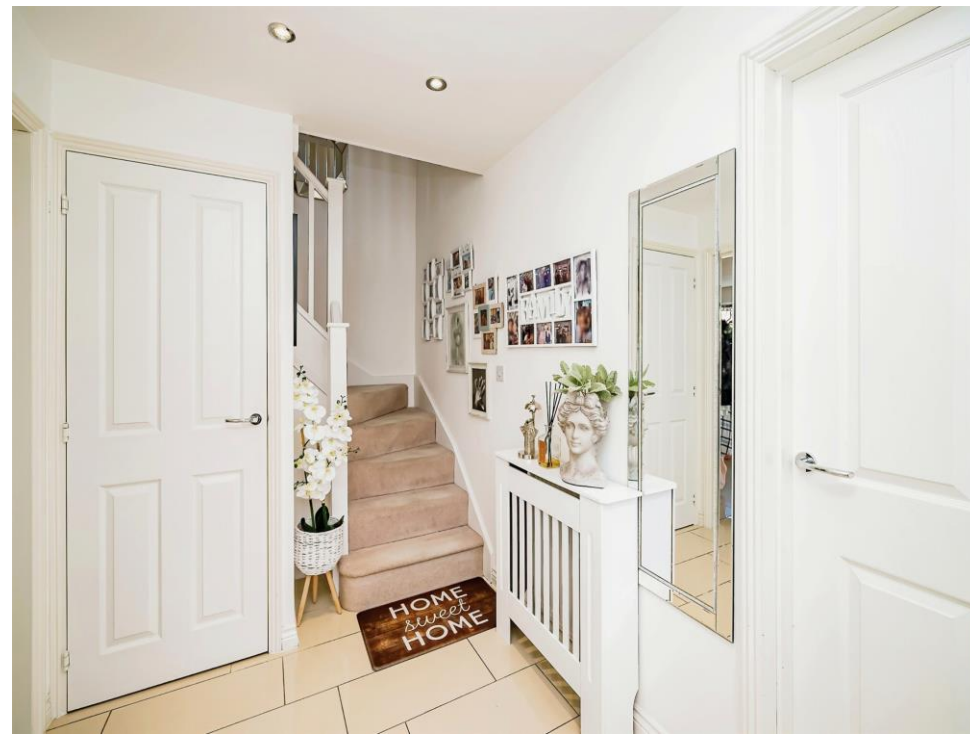
Parking

Driveway to rear

Outbuilding

Up and over door, door to side, power and lighting





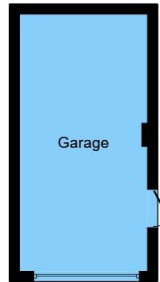




Ground Floor



First Floor



Garage



This floor plan is for illustrative purposes only. It is not drawn to scale. Any measurements, floor areas (including any total floor area), openings and orientation are approximate. No details are guaranteed, they cannot be relied upon for any purpose and they do not form part of any agreement. No liability is taken for any error, omission or misstatement. A party must rely upon its own inspection(s). Powered by www.focalagent.com

To view this property please contact Connells on

T 01296 395 111

E aylesbury@connells.co.uk

2 Temple Street
AYLESBURY HP20 2RH

EPC Rating: C

Tenure: Freehold

view this property online connells.co.uk/Property/ALS311576



1. MONEY LAUNDERING REGULATIONS Intending purchasers will be asked to produce identification documentation at a later stage and we would ask for your co-operation in order that there will be no delay in agreeing the sale. 2. These particulars do not constitute part or all of an offer or contract. 3. The measurements indicated are supplied for guidance only and as such must be considered incorrect. Potential buyers are advised to recheck measurements before committing to any expense. 4. We have not tested any apparatus, equipment, fixtures, fittings or services and it is in the buyers interest to check the working condition of any appliances.

Connells Residential is registered in England and Wales under company number 1489613, Registered Office is Cumbria House, 16-20 Hockliffe Street, Leighton Buzzard, Bedfordshire, LU7 1GN. VAT Registration Number is 500 2481 05.

See all our properties at www.connells.co.uk | www.rightmove.co.uk | www.zoopla.co.uk

Property Ref: ALS311576 - 0007