



**Connells**

Beeston Lane  
Aylesbury



## Property Description

NO CHAIN ATTACHED Connells is pleased to present this stunning four-bedroom semi-detached townhouse, located in the highly sought-after area of Buckingham Park, Aylesbury.

The property is well-maintained throughout and offers a spacious layout. On the ground floor, you'll find an entrance hall, cloakroom, and a bright, modern kitchen/dining room. The rear-facing lounge features French doors that open onto a landscaped garden. The first floor has three well-sized bedrooms, all with access to a modern family bathroom. The second floor boasts a larger-than-average principal bedroom with dual aspect views over open fields and an en-suite shower room.

Outside, the landscaped garden includes a summer house equipped with power and lighting. There is also access to the garage, and the front features a multi-car driveway, perfect for family use.

Viewing is highly recommended for this fantastic family home.

## Entrance Hall

Door to front, tiling underfoot, radiator, understairs storage with power points fitted.

## Cloakroom

Wash hand basin, radiator, fully tiled wet room

## Kitchen/Diner

19' 9" x 10' 1" ( 6.02m x 3.07m )

Window to front, door to side, tiling underfoot, part tiling, wall and base units, space for dishwasher, washing machine, fridge, gas hob and electric oven.

## Landing

Carpet underfoot, window to side

## Bedroom 1

23' 2" x 13' 9" ( 7.06m x 4.19m )

Window to front, and side and two to rear, radiators (two), carpet underfoot

## En-Suite

towel rail, shaving point, double shower, WC, wash hand basin, window to rear

## Bedroom 2

12' 2" x 9' 7" ( 3.71m x 2.92m )

Window to front, laminated flooring

## Bedroom 3

9' 7" x 10' 9" ( 2.92m x 3.28m )

Window to rear, laminated flooring, radiator

## Bedroom 4

7' 5" x 10' 9" ( 2.26m x 3.28m )

Window to rear, laminate underfoot, radiator

## Bathroom

Window to front, tiling underfoot, wc, wash hand basin, bath/mixer, shaving point radiator

## Second Bathroom

Window to side, tiling underfoot, partial tiling, wc, wash hand basin,

## Summer House

11' 9" x 5' 8" ( 3.58m x 1.73m )

Power and lighting

## Rear Garden

Decking to rear, near patio, side access

## Parking

Driveway times 3

## Garage

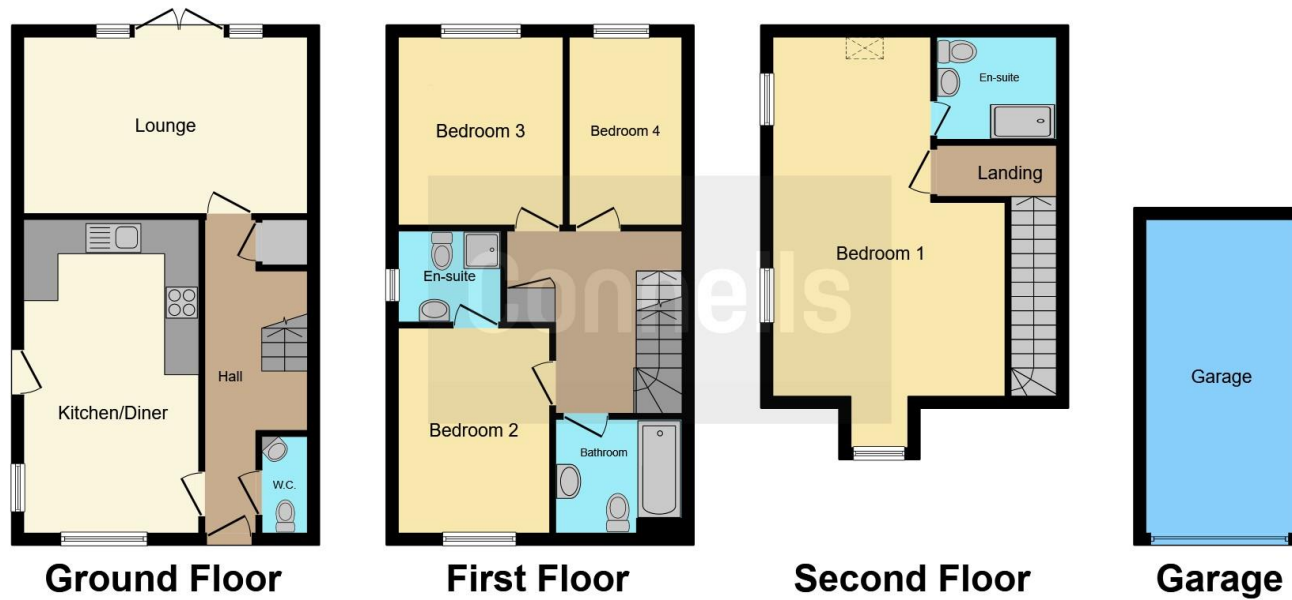
17' 4" x 8' 6" ( 5.28m x 2.59m )

Up and over, door to side, fully powered









This floor plan is for illustrative purposes only. It is not drawn to scale. Any measurements, floor areas (including any total floor area), openings and orientation are approximate. No details are guaranteed, they cannot be relied upon for any purpose and they do not form part of any agreement. No liability is taken for any error, omission or misstatement. A party must rely upon its own inspection(s). Powered by [www.focalagent.com](http://www.focalagent.com)

To view this property please contact Connells on

**T 01296 395 111**  
**E [aylesbury@connells.co.uk](mailto:aylesbury@connells.co.uk)**

2 Temple Street  
 AYLESBURY HP20 2RH

**EPC Rating: B**

Tenure: Freehold

**view this property online [connells.co.uk/Property/ALS311689](http://connells.co.uk/Property/ALS311689)**



1. MONEY LAUNDERING REGULATIONS Intending purchasers will be asked to produce identification documentation at a later stage and we would ask for your co-operation in order that there will be no delay in agreeing the sale. 2. These particulars do not constitute part or all of an offer or contract. 3. The measurements indicated are supplied for guidance only and as such must be considered incorrect. Potential buyers are advised to recheck measurements before committing to any expense. 4. We have not tested any apparatus, equipment, fixtures, fittings or services and it is in the buyers interest to check the working condition of any appliances.

Connells Residential is registered in England and Wales under company number 1489613, Registered Office is Cumbria House, 16-20 Hockliffe Street, Leighton Buzzard, Bedfordshire, LU7 1GN. VAT Registration Number is 500 2481 05.

**See all our properties at [www.connells.co.uk](http://www.connells.co.uk) | [www.rightmove.co.uk](http://www.rightmove.co.uk) | [www.zoopla.co.uk](http://www.zoopla.co.uk)**

Property Ref: ALS311689 - 0009