



Connells

Carrick Street
Aylesbury



Property Description

Connells are delighted to bring to the market this beautifully presented four bedroom end of terraced family home with garage and driveway parking. Located in the sought after Berryfields development with local primary schools and Aylesbury vale academy within walking distance.

This family orientated development boasts beautiful scenery, over 13 local parks, cycle path, open spaces, local shops with a doctor surgery and Aylesbury vale parkway train station all within walking distance.

This lovely family home has been beautifully decorated throughout, offering modern fitted kitchen with integrated appliances, downstairs W/C, living room and a newly constructed dining room with sky light windows and patio door to a low maintenance rear garden.

Entrance Hall

Door to front with wood laminate underfoot. Radiator and window to front.

Cloakroom

Wash hand basin, Tiled flooring, Radiator, Part tiled WC.

Lounge

12' 7" x 15' 8" (3.84m x 4.78m)

Laminate underfoot with French doors to rear dining room with windows either side. Radiator

Dining Room

14' 11" x 7' 9" (4.55m x 2.36m)

14' 11" x 7' 9" (4.55m x 2.36m) Patio doors to garden, Heated tiled flooring, Radiator, Skylight.

Kitchen

11' 3" x 8' 4" (3.43m x 2.54m)

Window to front, Heated tiled flooring, fitted kitchen, integrated appliances.

Bedroom One

15' 7" x 20' 3" (4.75m x 6.17m)

Window to front and skylight window to rear, Carpet, Radiator

En Suite

Window to rear, Tiled flooring, Wash hand basin, Radiator, Part tiled, WC.

Bedroom Two

9' 5" x 8' 9" (2.87m x 2.67m)

Window to front, Carpet, radiator

Bedroom Three

11' 1" x 8' 4" (3.38m x 2.54m)

Window to rear, Carpet, Radiator

Bedroom Four

11' 1" x 6' 11" (3.38m x 2.11m)

Window to rear, Carpet, Radiator

Bathroom

Tiled flooring, Wash hand basin, Bath with mixer, Shaving point, Part tiled, Towel Rail, WC.

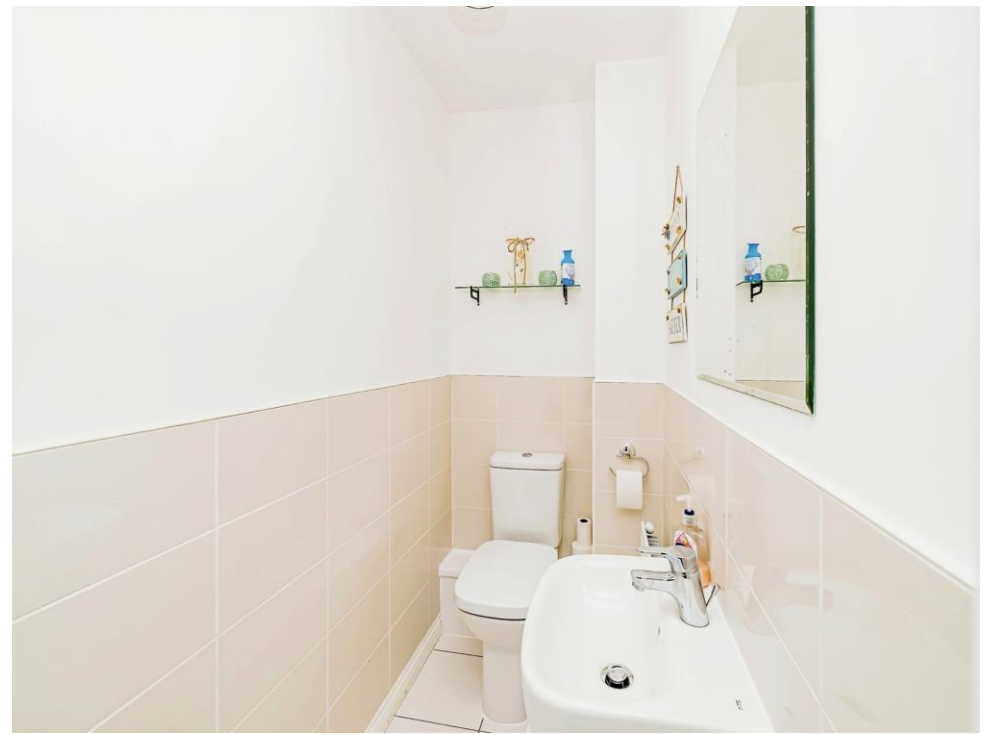
Rear Garden

Artificial lawn and enclosed fencing

Garage

Up and over door, power and light with rear door access.









This floor plan is for illustrative purposes only. It is not drawn to scale. Any measurements, floor areas (including any total floor area), openings and orientation are approximate. No details are guaranteed, they cannot be relied upon for any purpose and they do not form part of any agreement. No liability is taken for any error, omission or misstatement. A party must rely upon its own inspection(s). Powered by www.focalagent.com

To view this property please contact Connells on

T 01296 395 111
E aylesbury@connells.co.uk

2 Temple Street
 AYLESBURY HP20 2RH

EPC Rating: B

Tenure: Freehold

view this property online connells.co.uk/Property/ALS310923



1. MONEY LAUNDERING REGULATIONS Intending purchasers will be asked to produce identification documentation at a later stage and we would ask for your co-operation in order that there will be no delay in agreeing the sale. 2. These particulars do not constitute part or all of an offer or contract. 3. The measurements indicated are supplied for guidance only and as such must be considered incorrect. Potential buyers are advised to recheck measurements before committing to any expense. 4. We have not tested any apparatus, equipment, fixtures, fittings or services and it is in the buyers interest to check the working condition of any appliances.

Connells Residential is registered in England and Wales under company number 1489613, Registered Office is Cumbria House, 16-20 Hockliffe Street, Leighton Buzzard, Bedfordshire, LU7 1GN. VAT Registration Number is 500 2481 05.

See all our properties at www.connells.co.uk | www.rightmove.co.uk | www.zoopla.co.uk

Property Ref: ALS310923 - 0006