



**Connells**

The Firs High Street  
Whitchurch Aylesbury



### Property Description

Connells are pleased to announce the launch of this BEAUTIFUL ONE BEDROOM, 1ST FLOOR APARTMENT in the desirable village location of WHITCHURCH. This apartment offers a LARGE DOUBLE BEDROOM with views overlooking the rolling hills and countryside and a BUILT-IN storage cupboard for all of your personal belongings. Moving to the LARGE LIVING ACCOMMODATION, with a contemporary finish and a JULIET BALCONY towards the rear overlooking the rolling hills. The KITCHEN has INTEGRATED appliances and a sky light towards the front allowing lots of NATURAL LIGHT in the property and living areas. Offering NO CHAIN this property is great for all buyer types as a hassle free and quick purchase. To enquire now get in touch with our team at CONNELLS AYLESBURY on 01296395111

### KEY FEATURES:

- ONE DOUBLE BEDROOM
- POPULAR VILLAGE LOCATION
- LOVELY VIEWS FROM APARTMENT
- ALLOCATED PARKING BAY
- LARGE LIVING ACCOMMODATION
- JULIETTE PARKING
- NO CHAIN

### Kitchen

10' 7" x 27' 5" ( 3.23m x 8.36m )

Fitted kitchen comprising wall and base units, work surface es, Juliette balcony leading to lovely views, telephone and tv point, integrated dishwasher, oven and hob and fridge/freezer, space for washing machine, radiator, tiling to splashback areas, double glazed window to side aspect.

## Bedroom

11' 9" x 9' 9" ( 3.58m x 2.97m )

Double glazed window, tv point, radiator, built-in storage, carpet.

## Bathroom

Fitted suite comprising low level wc, skylight, bath, fully tiled, shower, heated towel rail, tiled flooring.

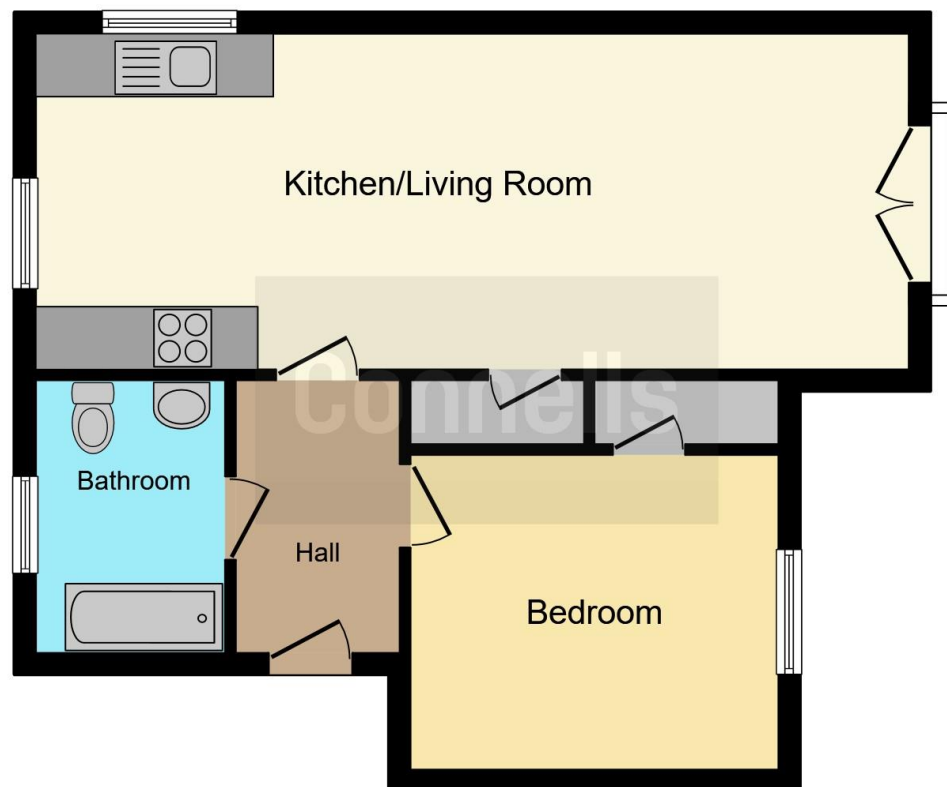
## Parking

One allocated parking space.









This floorplan is for illustrative purposes only and is not drawn to scale. Measurements, floor-areas, openings and orientations are approximate. They should not be relied upon for any purpose and do not form any part of an agreement. No liability is taken for any error or mis-statement. All parties must rely on their own inspections.

To view this property please contact Connells on

**T 01296 395 111**

**E aylesbury@connells.co.uk**

2 Temple Street  
AYLESBURY HP20 2RH

**EPC Rating: D**

Tenure: Leasehold

**view this property online [connells.co.uk/Property/ALS309942](https://www.connells.co.uk/Property/ALS309942)**

Lease details are currently being compiled. For further information please contact the branch. Please note additional fees could be incurred for items such as leasehold packs.



1. MONEY LAUNDERING REGULATIONS Intending purchasers will be asked to produce identification documentation at a later stage and we would ask for your co-operation in order that there will be no delay in agreeing the sale. 2. These particulars do not constitute part or all of an offer or contract. 3. The measurements indicated are supplied for guidance only and as such must be considered incorrect. Potential buyers are advised to recheck measurements before committing to any expense. 4. We have not tested any apparatus, equipment, fixtures, fittings or services and it is in the buyers interest to check the working condition of any appliances.

**See all our properties at [www.connells.co.uk](https://www.connells.co.uk) | [www.rightmove.co.uk](https://www.rightmove.co.uk) | [www.zoopla.co.uk](https://www.zoopla.co.uk)**

Property Ref: ALS309942 - 0002