



Connells

Hicks Farm Rise
High Wycombe

Hicks Farm Rise High Wycombe HP13 7SQ

for sale
£450,000



Property Description

This three-bedroom semi-detached family home is offered to the market in good condition with no onward chain and is conveniently located on the East of High Wycombe town centre.

With attractive kerb appeal and being located in a nice residential location the property boasts a front garden, off street parking, a good-sized rear garden with a beautiful summerhouse/garden office the added benefit of own drive to detached garage.

To the ground floor the accommodation comprises an entrance hall, reception room, dining room & fitted kitchen. To the upper floor the property offers three bedrooms and family bathroom.

The property makes a perfect family home or an ideal investment.

Please call Connells now to avoid disappointment!

Living Room

13' 9" max x 13' 3" max (4.19m max x 4.04m max)

Dining Room

8' 7" max x 9' 5" max (2.62m max x 2.87m max)

Bedroom One

9' 1" max x 13' 6" max (2.77m max x 4.11m max)

Bedroom Two

11' 10" max x 9' 4" max (3.61m max x 2.84m max)

Bedroom Three

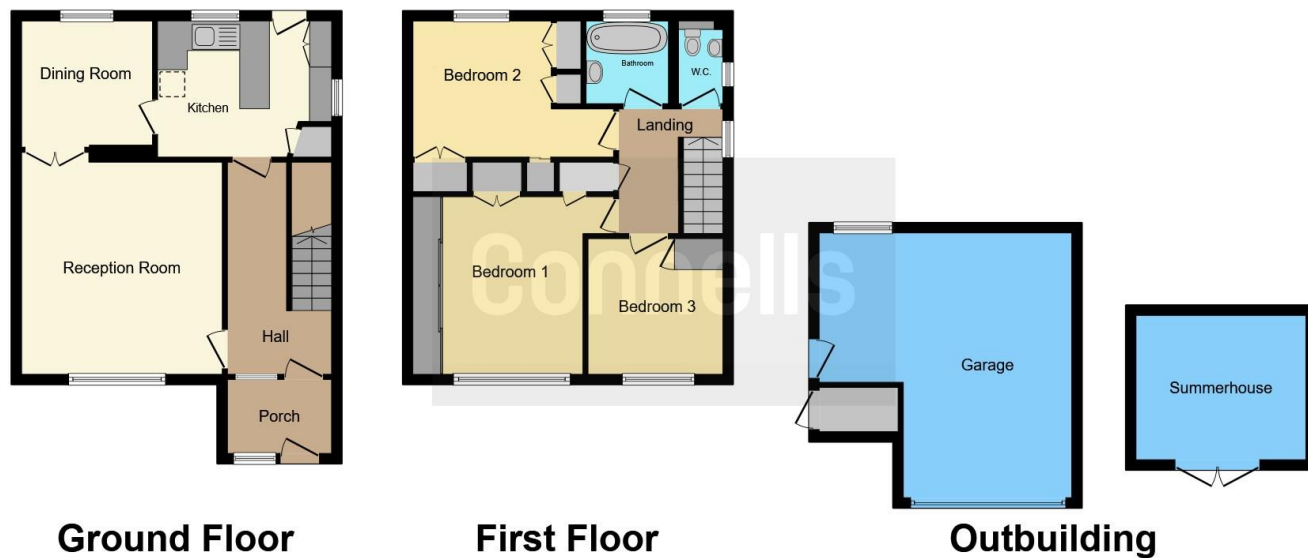
8' 7" max x 9' 5" max (2.62m max x 2.87m max)

Bathroom

5' 5" max x 5' 7" max (1.65m max x 1.70m max)







This floor plan is for illustrative purposes only. It is not drawn to scale. Any measurements, floor areas (including any total floor area), openings and orientation are approximate. No details are guaranteed, they cannot be relied upon for any purpose and they do not form part of any agreement. No liability is taken for any error, omission or misstatement. A party must rely upon its own inspection(s). Powered by www.focalagent.com

To view this property please contact Connells on

T 01494 534 822
E highwycombe@connells.co.uk

1-3 Queen Victoria Road
 HIGH WYCOMBE HP11 1BA

EPC Rating: C

check out more properties at connells.co.uk



Tenure: Freehold



1. MONEY LAUNDERING REGULATIONS Intending purchasers will be asked to produce identification documentation at a later stage and we would ask for your co-operation in order that there will be no delay in agreeing the sale. 2. These particulars do not constitute part or all of an offer or contract. 3. The measurements indicated are supplied for guidance only and as such must be considered incorrect. Potential buyers are advised to recheck measurements before committing to any expense. 4. We have not tested any apparatus, equipment, fixtures, fittings or services and it is in the buyers interest to check the working condition of any appliances.

Connells Residential is registered in England and Wales under company number 1489613, Registered Office is Cumbria House, 16-20 Hockliffe Street, Leighton Buzzard, Bedfordshire, LU7 1GN. VAT Registration Number is 500 2481 05.

See all our properties at www.connells.co.uk | www.rightmove.co.uk | www.zoopla.co.uk

Property Ref: WYC312837 - 0003