



Connells

Daywise Court Cressex Road
High Wycombe

Daywise Court Cressex Road High Wycombe HP12 4SD

for sale
£190,000



Property Description

Modern ground floor apartment providing spacious accommodation. The apartment can be accessed via two entrances, one to the rear leading from the parking and communal garden area and a private entrance to the front leading into the living room.

The apartment comprises entrance hall, living room and kitchen, master bedroom and ensuite, second bedroom and bathroom.

Located in the Cressex area of High Wycombe, a short walk from a number of amenities including shops and a bus route that services the town centre.

Entrance Hall

Living Room

12' 1" max x 20' 3" max (3.68m max x 6.17m max)

Kitchen

8' 5" max x 9' 5" max (2.57m max x 2.87m max)

Bedroom One

12' 1" max x 8' 5" max (3.68m max x 2.57m max)

Ensuite

12' 1" max x 8' 5" max (3.68m max x 2.57m max)

Bedroom Two

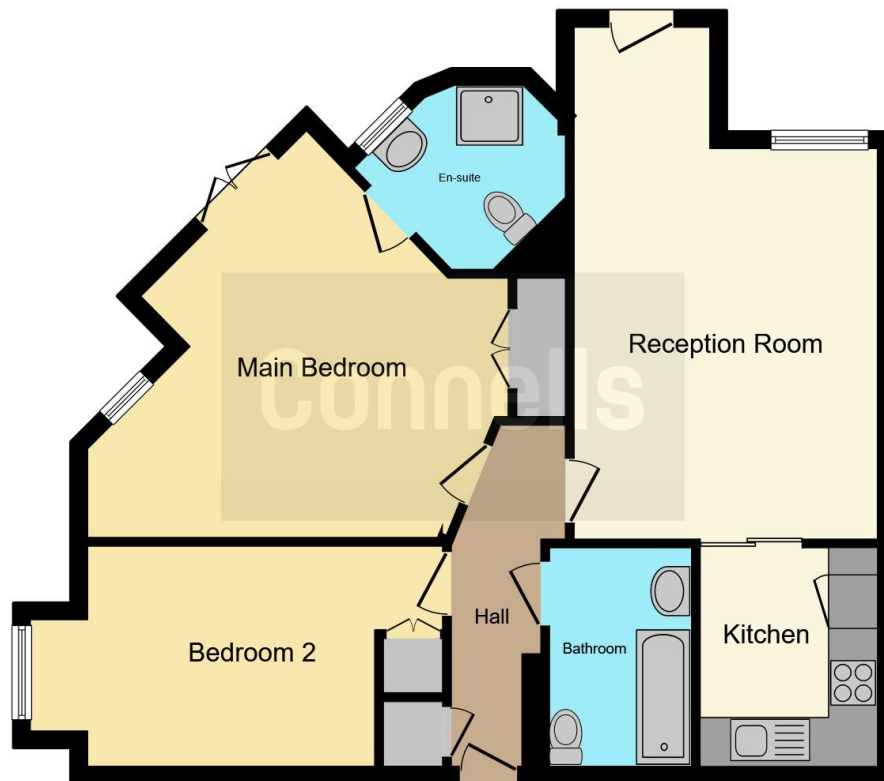
12' 1" max x 8' 5" max (3.68m max x 2.57m max)

Bathroom

5' 6" max x 9' 5" max (1.68m max x 2.87m max)







This floor plan is for illustrative purposes only. It is not drawn to scale. Any measurements, floor areas (including any total floor area), openings and orientation are approximate. No details are guaranteed, they cannot be relied upon for any purpose and they do not form part of any agreement. No liability is taken for any error, omission or misstatement. A party must rely upon its own inspection(s). Powered by www.focalagent.com

To view this property please contact Connells on

T 01494 534 822
E highwycombe@connells.co.uk

1-3 Queen Victoria Road
 HIGH WYCOMBE HP11 1BA

EPC Rating: D

view this property online connells.co.uk/Property/WYC312787

This is a Leasehold property with details as follows; Term of Lease 99 years from 01 Jan 2006. Should you require further information please contact the branch. Please Note additional fees could be incurred for items such as Leasehold packs.



Tenure: Leasehold



1. MONEY LAUNDERING REGULATIONS Intending purchasers will be asked to produce identification documentation at a later stage and we would ask for your co-operation in order that there will be no delay in agreeing the sale. 2. These particulars do not constitute part or all of an offer or contract. 3. The measurements indicated are supplied for guidance only and as such must be considered incorrect. Potential buyers are advised to recheck measurements before committing to any expense. 4. We have not tested any apparatus, equipment, fixtures, fittings or services and it is in the buyers interest to check the working condition of any appliances.

Connells Residential is registered in England and Wales under company number 1489613, Registered Office is Cumbria House, 16-20 Hockliffe Street, Leighton Buzzard, Bedfordshire, LU7 1GN. VAT Registration Number is 500 2481 05.

See all our properties at www.connells.co.uk | www.rightmove.co.uk | www.zoopla.co.uk

Property Ref: WYC312787 - 0008