



Connells

Parrs Road
Stokenchurch High Wycombe



Property Description

A well-presented three-bedroom detached family home located in a popular road with easy access to village amenities. With good sized front and rear garden the accommodation comprises, entrance hall, cloakroom/W.C., living room, kitchen/dining room, first floor landing, three bedrooms, family bathroom/W.C., gas heating to radiators, double glazing and garage with large driveway. Viewing fully recommended.

Entrance Hall

Cloakroom

WC and shower

Living Room

14' 2" max x 11' 10" max (4.32m max x 3.61m max)

With working fireplace

Kitchen / Dining Room

29' 6" max x 8' 5" max (8.99m max x 2.57m max)

Conservatory

11' 7" max x 20' 1" max (3.53m max x 6.12m max)

Bedroom One

11' 3" max x 12' max (3.43m max x 3.66m max)

Bedroom Two

12' 7" max x 8' 7" max (3.84m max x 2.62m max)

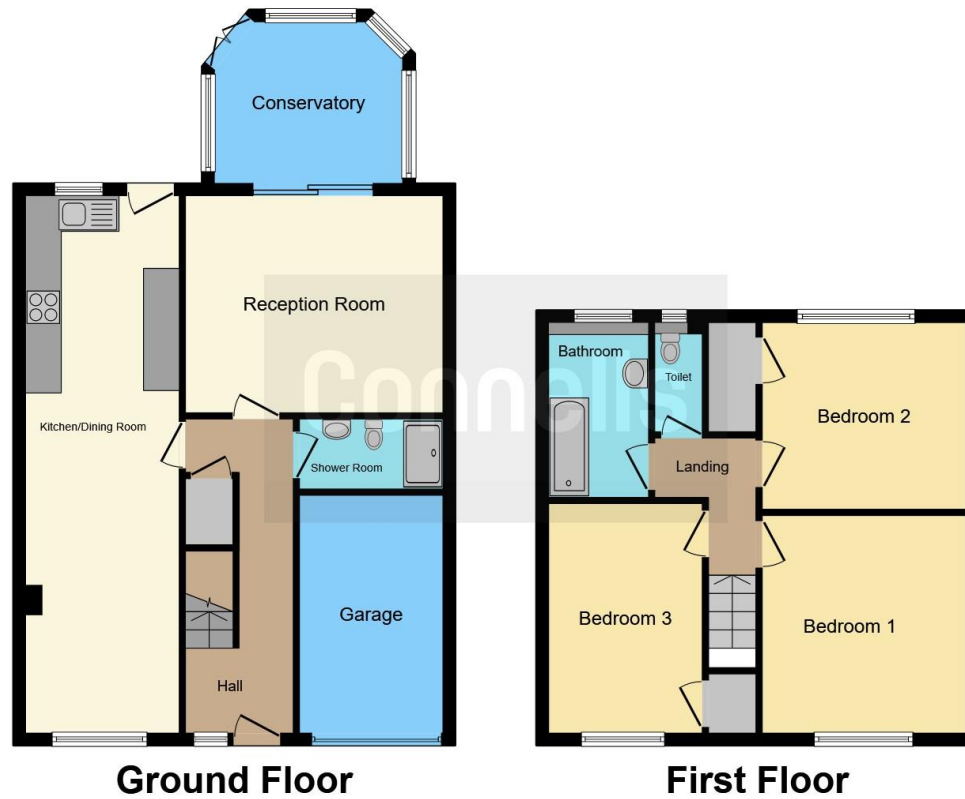
Bedroom Three

11' 4" max x 10' 7" max (3.45m max x 3.23m max)

Bathroom

Bath and shower. Separate WC





This floor plan is for illustrative purposes only. It is not drawn to scale. Any measurements, floor areas (including any total floor area), openings and orientation are approximate. No details are guaranteed, they cannot be relied upon for any purpose and they do not form part of any agreement. No liability is taken for any error, omission or misstatement. A party must rely upon its own inspection(s). Powered by www.focalagent.com

To view this property please contact Connells on

T 01494 534 822
E highwycombe@connells.co.uk

1-3 Queen Victoria Road
 HIGH WYCOMBE HP11 1BA

EPC Rating: D

view this property online connells.co.uk/Property/WYC312517

Tenure: Freehold



1. MONEY LAUNDERING REGULATIONS Intending purchasers will be asked to produce identification documentation at a later stage and we would ask for your co-operation in order that there will be no delay in agreeing the sale. 2. These particulars do not constitute part or all of an offer or contract. 3. The measurements indicated are supplied for guidance only and as such must be considered incorrect. Potential buyers are advised to recheck measurements before committing to any expense. 4. We have not tested any apparatus, equipment, fixtures, fittings or services and it is in the buyers interest to check the working condition of any appliances.

Connells Residential is registered in England and Wales under company number 1489613, Registered Office is Cumbria House, 16-20 Hockliffe Street, Leighton Buzzard, Bedfordshire, LU7 1GN. VAT Registration Number is 500 2481 05.

See all our properties at www.connells.co.uk | www.rightmove.co.uk | www.zoopla.co.uk

Property Ref: WYC312517 - 0004