



Connells

Apple Tree Close
High Wycombe



Property Description

Presented in excellent condition and with no onward chain is this three-bedroom semi-detached house. There are currently tenants in situ, so this property could be purchased as an investment opportunity or a family home.

The property benefits from entrance hall; downstairs cloakroom with WC and wash hand basin. Fitted kitchen with wall and base level units and integrated appliances. The reception room is dual aspect, with double doors leading to the rear garden, and with a good size storage room. The first floor accommodation comprises double principle bedroom with fitted wardrobe and an ensuite shower room. Two further bedrooms and a family bathroom that can be accessed from the landing and also from bedroom two.

The property further benefits from a partially boarded attic, front and rear gardens and off street parking for up to three cars. Located to the east side of High Wycombe, the house is just over two miles from the town centre and mainline train station.

Entrance Hall

Stairs to first floor and doors to:

Downstairs Wc

with WC and wash hand basin

Reception

16' 2" max x 17' 6" max (4.93m max x 5.33m max)
Storage cupboard. Dual aspect.
Storage cupboard

Kitchen

10' 9" max x 9' 7" max (3.28m max x 2.92m max)
Wall and base level units. Integrated appliances.

Bedroom One

11' 9" max x 13' 4" max (3.58m max x 4.06m max)
With fitted wardrobe and two cupboards (airing cupboard and how water tank)

Ensuite

With shower, WC and wash hand basin

Bedroom Two

8' 9" max x 10' max (2.67m max x 3.05m max)
Fitted wardrobe. Door to bathroom

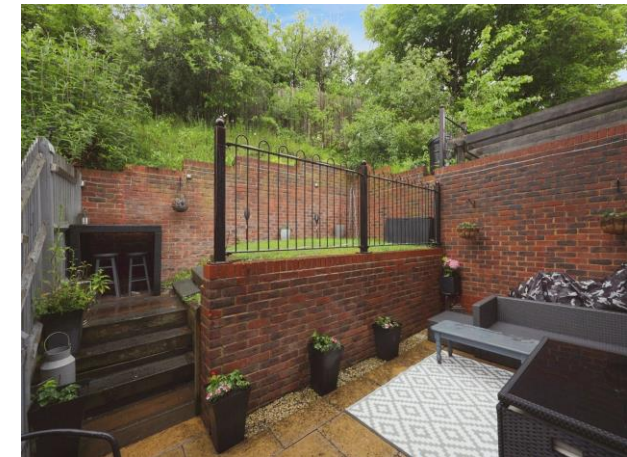
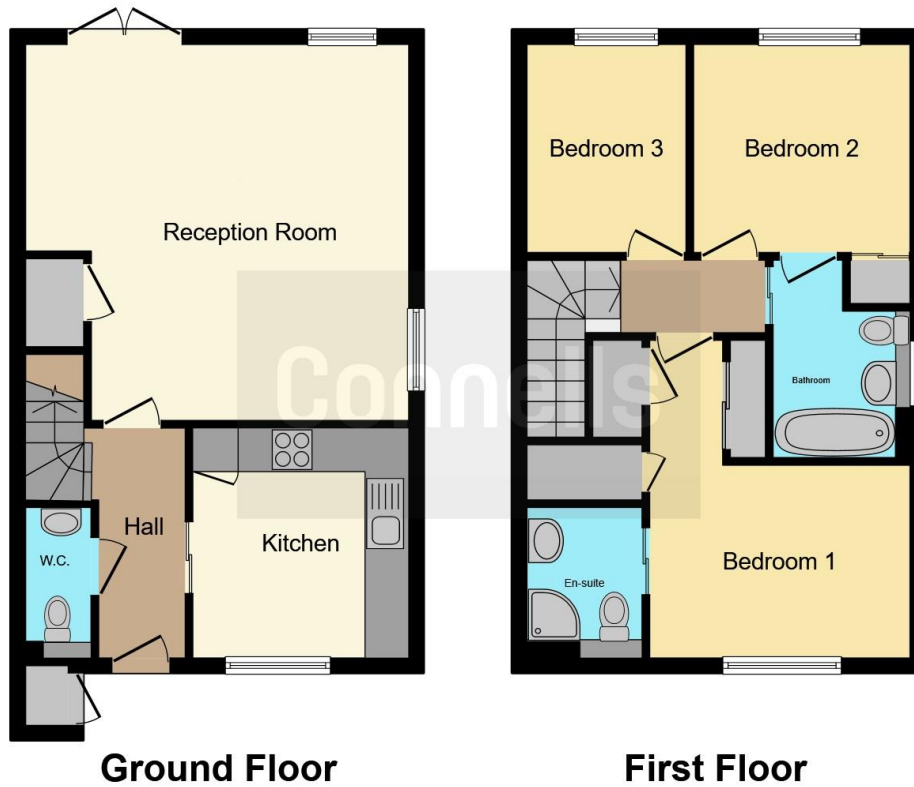
Bedroom Three

7' 1" max x 5' 5" max (2.16m max x 1.65m max)

Bathroom

Bath, WC and wash hand basin.





This floor plan is for illustrative purposes only. It is not drawn to scale. Any measurements, floor areas (including any total floor area), openings and orientation are approximate. No details are guaranteed, they cannot be relied upon for any purpose and they do not form part of any agreement. No liability is taken for any error, omission or misstatement. A party must rely upon its own inspection(s). Powered by www.focalagent.com

To view this property please contact Connells on

T 01494 534 822
E highwycombe@connells.co.uk

1-3 Queen Victoria Road
 HIGH WYCOMBE HP11 1BA

EPC Rating: C

view this property online connells.co.uk/Property/WYC312448

Tenure: Freehold



1. MONEY LAUNDERING REGULATIONS Intending purchasers will be asked to produce identification documentation at a later stage and we would ask for your co-operation in order that there will be no delay in agreeing the sale. 2. These particulars do not constitute part or all of an offer or contract. 3. The measurements indicated are supplied for guidance only and as such must be considered incorrect. Potential buyers are advised to recheck measurements before committing to any expense. 4. We have not tested any apparatus, equipment, fixtures, fittings or services and it is in the buyers interest to check the working condition of any appliances.

Connells Residential is registered in England and Wales under company number 1489613, Registered Office is Cumbria House, 16-20 Hockliffe Street, Leighton Buzzard, Bedfordshire, LU7 1GN. VAT Registration Number is 500 2481 05.

See all our properties at www.connells.co.uk | www.rightmove.co.uk | www.zoopla.co.uk

Property Ref: WYC312448 - 0004