



Connells

Five Acre Wood
High Wycombe



Property Description

Offered in good decorative order, semi-detached family home located in the High Wycombe. The property briefly comprises entrance hall, living room with bay window leading into the office area which has doors to the fitted kitchen and dining room. To the first floor are three bedrooms, two with fitted storage, family bathroom with bath, WC and washing had basin with vanity.

The property also benefits from driveway parking and garage, front garden and enclosed rear garden with decked area and mature shrubs and trees.

Located in New Road area, the property is a short walk from a number of amenities including shops and a bus route that services the town centre. There are several schools in the local area including Chepping View Academy, Cressex School, John Hampden Grammar for boys and Wycombe High School for girls all within walking distance.

Entrance Hall

12' 9" max x 6' 5" max (3.89m max x 1.96m max)

Living Room / Office

23' 7" max x 12' 6" max (7.19m max x 3.81m max)

Dining Room

8' 7" max x 10' 1" max (2.62m max x 3.07m max)

Kitchen

8' 8" max x 12' 6" max (2.64m max x 3.81m max)

Landing

6' 3" max x 8' max (1.91m max x 2.44m max)

Bedroom One

14' 5" max x 11' 3" max (4.39m max x 3.43m max)

Bedroom Two

8' 9" max x 8' 7" max (2.67m max x 2.62m max)

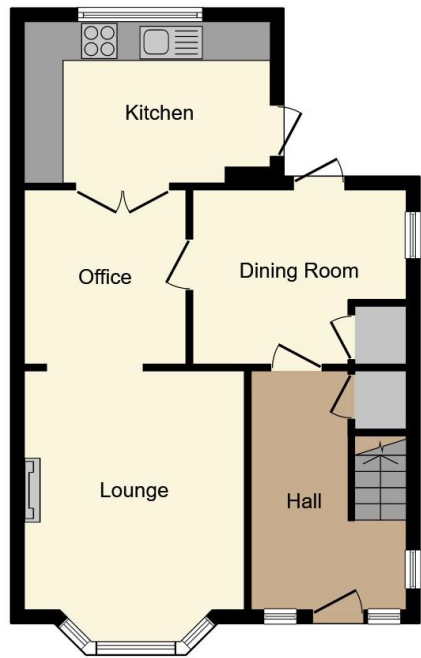
Bedroom Three

8' 9" max x 6' 2" max (2.67m max x 1.88m max)

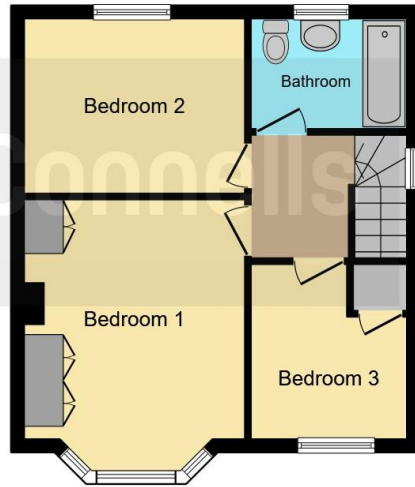
Bathroom

5' 6" max x 5' 9" max (1.68m max x 1.75m max)

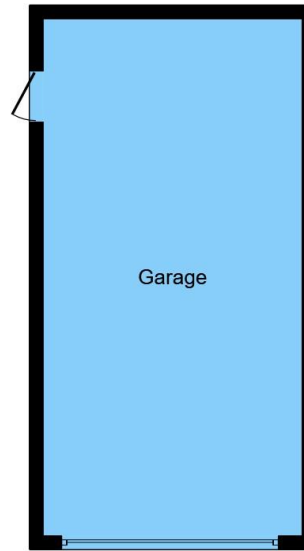




Ground Floor



First Floor



Garage

This floorplan is for illustrative purposes only and is not drawn to scale. Measurements, floor-areas, openings and orientations are approximate. They should not be relied upon for any purpose and do not form any part of an agreement. No liability is taken for any error or mis-statement. All parties must rely on their own inspections.

To view this property please contact Connells on

T 01494 534 822
E highwycombe@connells.co.uk

1-3 Queen Victoria Road
HIGH WYCOMBE HP11 1BA

EPC Rating: D

check out more properties at connells.co.uk



Tenure: Freehold



1. MONEY LAUNDERING REGULATIONS Intending purchasers will be asked to produce identification documentation at a later stage and we would ask for your co-operation in order that there will be no delay in agreeing the sale. 2. These particulars do not constitute part or all of an offer or contract. 3. The measurements indicated are supplied for guidance only and as such must be considered incorrect. Potential buyers are advised to recheck measurements before committing to any expense. 4. We have not tested any apparatus, equipment, fixtures, fittings or services and it is in the buyers interest to check the working condition of any appliances.

Connells Residential is registered in England and Wales under company number 1489613, Registered Office is Cumbria House, 16-20 Hockliffe Street, Leighton Buzzard, Bedfordshire, LU7 1GN. VAT Registration Number is 500 2481 05.

See all our properties at www.connells.co.uk | www.rightmove.co.uk | www.zoopla.co.uk

Property Ref: WYC312414 - 0002