



WATERSLADE HOUSE

• HADDENHAM •



WELCOME TO

WATERSLADE HOUSE

Waterslade House is a collection of contemporary 1 and 2 bedroom apartments in the beautiful village of Haddenham. Here, modern living meets the charm of a historic village, offering residents the perfect blend of comfort and convenience.

Each apartment is thoughtfully designed with high-quality finishes and modern amenities to cater to your lifestyle needs.

Waterslade House boasts excellent transport links, being just a 5-minute walk from Haddenham and Thame Parkway station. From there, three services per hour run to London Marylebone, with some journeys taking as little as 39 minutes. Additionally, the M40 is conveniently accessible, with junction 7 only a 15-minute drive away.

Waterslade House provides easy access to picturesque landscapes, local shops, and quaint village attractions. Experience the best of both worlds at Waterslade House, where contemporary elegance harmonises with the serene beauty of village life.

Click to go to a section

|| ABOUT
HADDENHAM

|| ABOUT
WATERSLADE
HOUSE

|| SPECIFICATIONS

|| 1 BEDROOM
APARTMENT
FLOORPLANS

|| 2 BEDROOM
APARTMENT
FLOORPLANS

|| CONTACT US





WATERSLADE HOUSE

HADDENHAM, A BLEND OF TRADITION AND MODERN LIVING

Haddenham is a picturesque village situated in Buckinghamshire, England, renowned for its traditional thatched cottages, duck ponds, and beautiful medieval architecture. Located just three miles from the Oxfordshire town of Thame, it boasts a rich history dating back to the Anglo-Saxon era.

The village is characterised by its vibrant community spirit, with local amenities including a variety of shops, pubs, and a village hall.

This charming village seamlessly blends historical charm with modern conveniences, making it a desirable place to live and visit.



WATERSLADE HOUSE

MAKE YOURSELF AT HOME



LIGHT-FILLED LIVING



8 Photograph of the kitchen area of apartment 24



Photograph of the kitchen area of a typical apartment



Photograph of the kitchen area of a typical apartment

CONTEMPORARY CONVENIENCE



TRANQUIL ESCAPES



Photograph of the bathroom of apartment 27



Photograph of the bedroom area of apartment 23 Show Home



SPECIFICATIONS

Kitchen/Dining and Living Room

- \\ Integrated fridge freezer
- \\ Soft-close kitchen cabinet doors and drawers in grey
- \\ Single oven
- \\ Ceramic hob with glass splash back
- \\ Stainless steel extractor hood
- \\ Stainless steel sink with stainless steel dual lever mixer tap
- \\ Grey laminate square edge worktops and up stands

Bathroom - 1 Bedroom Apartment

- \\ Walk in shower with shower head and hand held
- \\ Armera wall hung toilet with concealed cistern and dual flush
- \\ Armera wash basin and vanity unit with Grohe mixer tap
- \\ Heated towel radiator

Bathroom - 2 Bedroom Apartment

- \\ L-shaped shower bath and shower screen with handheld mixer shower
- \\ Armera wall hung toilet with concealed cistern and dual flush
- \\ Armera wash basin and vanity unit with Grohe mixer tap
- \\ Heated towel radiator

En Suite - 2 Bedroom Apartment

- \\ Walk in shower with shower head and hand held
- \\ Armera wall hung toilet with concealed cistern and dual flush
- \\ Armera wash basin and vanity unit with Grohe mixer tap
- \\ Heated towel radiator

Heating and Hot Water

- \\ Electric central Heating and Hot Water
- \\ Radiators to hallway, living room and bedroom(s)

Electrical and Lighting

- \\ LED downlight's to hallway, kitchen/ dining area, bathroom and en suite
- \\ Pendant lights to living room and bedroom(s)
- \\ USB sockets to bedrooms
- \\ Shaver socket to bathroom and en suite

Interior Finishes

- \\ Porcelanosa laminate flooring to kitchen/dining, living room and hallway
- \\ Luxury carpet to bedroom(s)
- \\ Full height Porcelanosa wall tiling to bathroom and en suite
- \\ Porcelanosa ceramic floor tiles to bathroom and en suite
- \\ Glass Juliet balcony with full height sliding doors
- \\ White painted walls, skirting and architraves

External

- \\ Patio area to selected ground floor apartments

Communal Areas

- \\ Carpet tiles to corridors with LED downlight's
- \\ Bin storage areas
- \\ Bike storage

Security & Peace of Mind

- \\ Audio door entry system
- \\ Mains fed smoke detector
- \\ 10 Year defect warranty





ONE BEDROOM APARTMENTS

ONE BEDROOM APARTMENTS



GROUND FLOOR



FIRST FLOOR



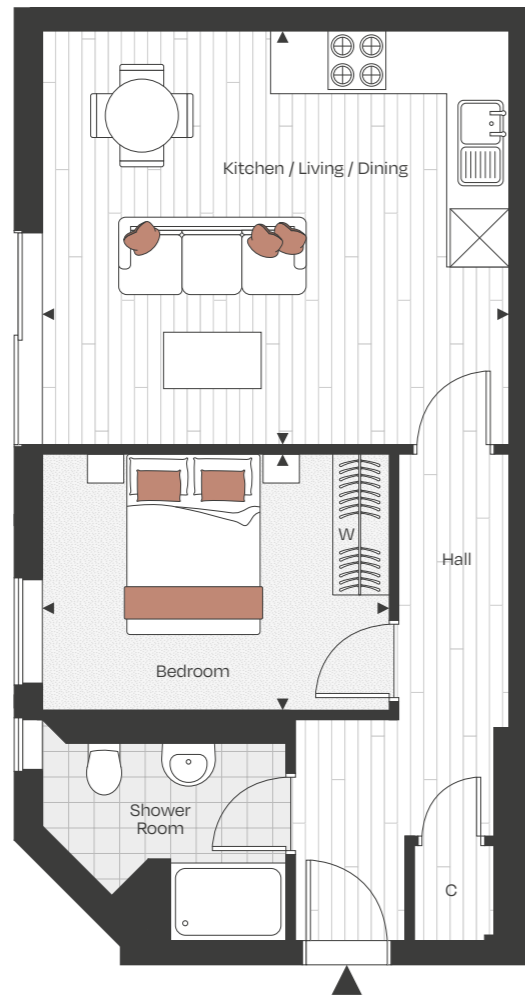
Key

One Bedroom Apartments

Two Bedroom Apartments

ONE BEDROOM

APARTMENT 01
GROUND FLOOR



Dimensions

Kitchen / Living / Dining	4.85m x 4.29m	15' 10" x 14' 0"
Bedroom	3.60m x 2.66m	11' 9" x 8' 8"

Key

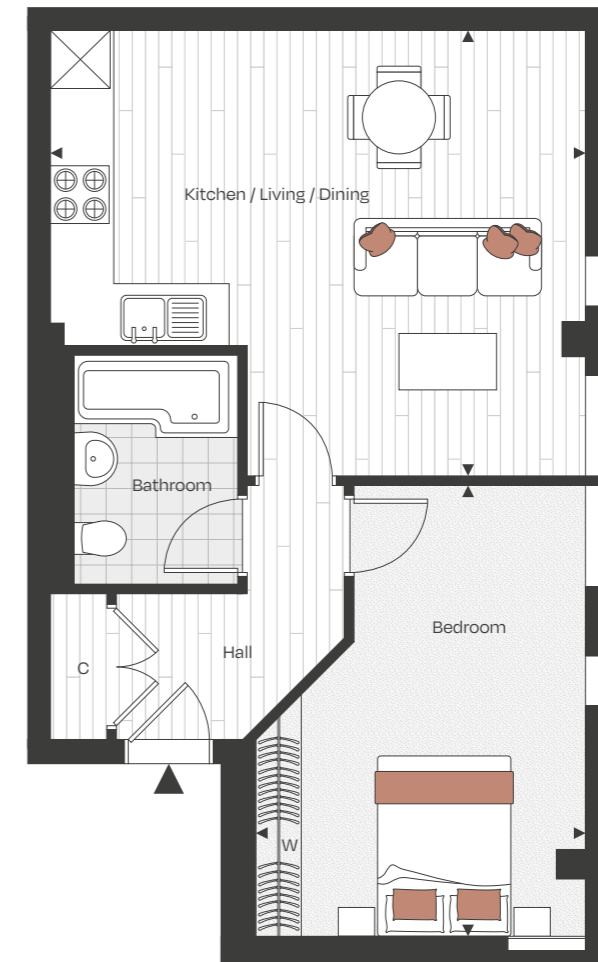
- ◄► Measurement Points
- C Cupboard
- W Wardrobe

Ground Floor



ONE BEDROOM

APARTMENT 02
GROUND FLOOR



Dimensions

Kitchen / Living / Dining	5.18m x 3.27m	16' 11" x 10' 8"
Bedroom	2.96m x 2.84m	9' 9" x 9' 3"

Key

- ◄► Measurement Points
- C Cupboard
- W Wardrobe

Ground Floor



ONE BEDROOM

APARTMENT 03
GROUND FLOOR



Dimensions

Kitchen / Living / Dining	6.04m x 4.74m	19' 9" x 15' 6"
Bedroom	2.94m x 2.86m	9' 7" x 9' 4"

Key

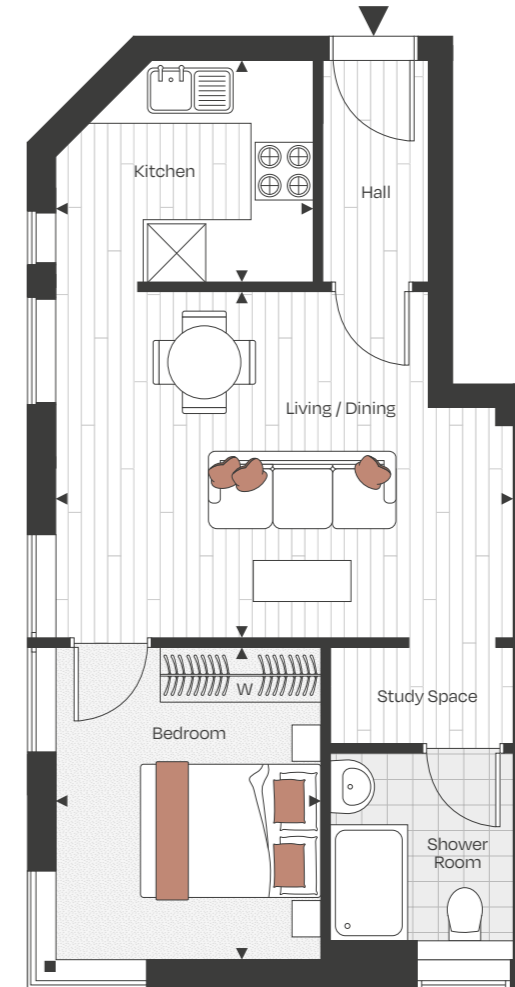
- ◀▶ Measurement Points
- C Cupboard
- W Wardrobe

Ground Floor



ONE BEDROOM

APARTMENT 04
GROUND FLOOR



Dimensions

Kitchen	2.67m x 2.31m	8' 9" x 7' 6"
Living / Dining	4.76m x 3.59m	15' 7" x 11' 9"
Bedroom	3.25m x 2.75m	10' 7" x 9' 0"

Key

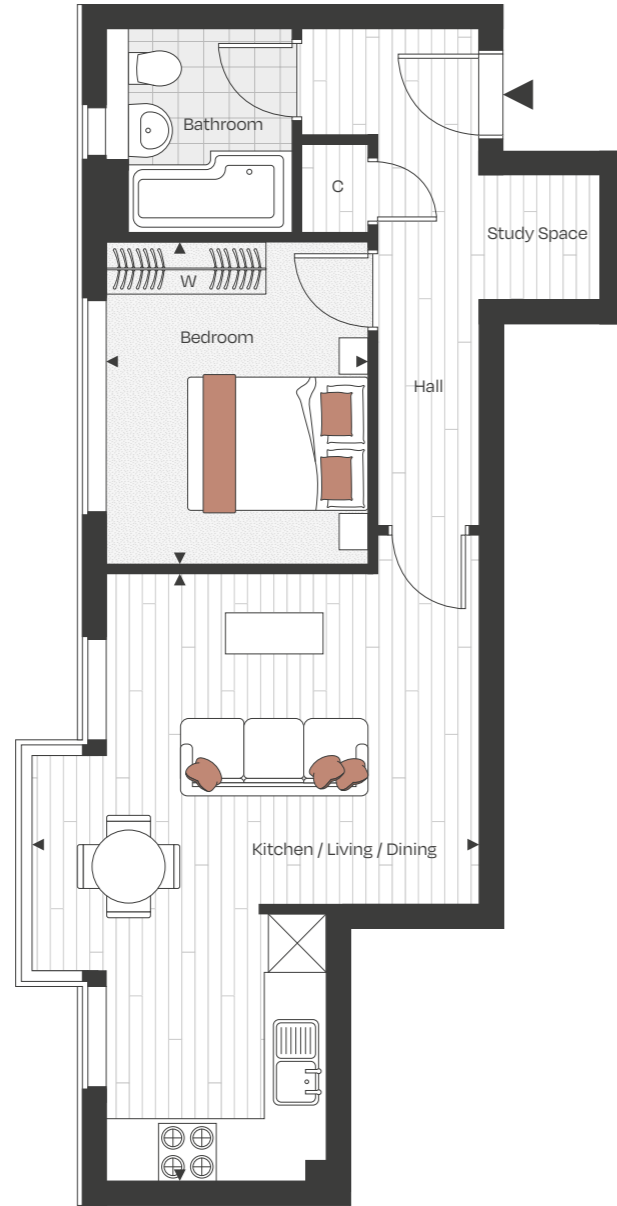
- ◀▶ Measurement Points
- C Cupboard
- W Wardrobe

Ground Floor



ONE BEDROOM

APARTMENT 05
FIRST FLOOR



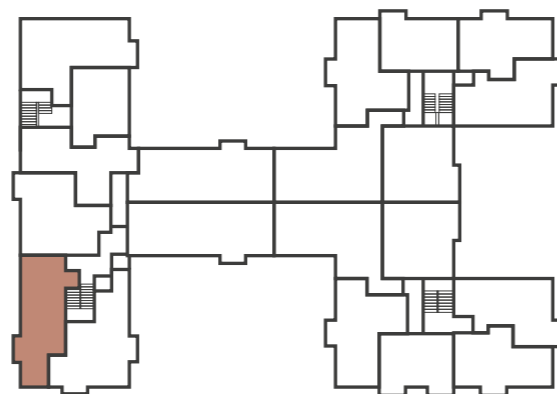
Dimensions

Kitchen / Living / Dining	6.31m x 4.64m	20' 8" x 15' 2"
Bedroom	3.34m x 2.72m	10' 11" x 8' 11"

Key

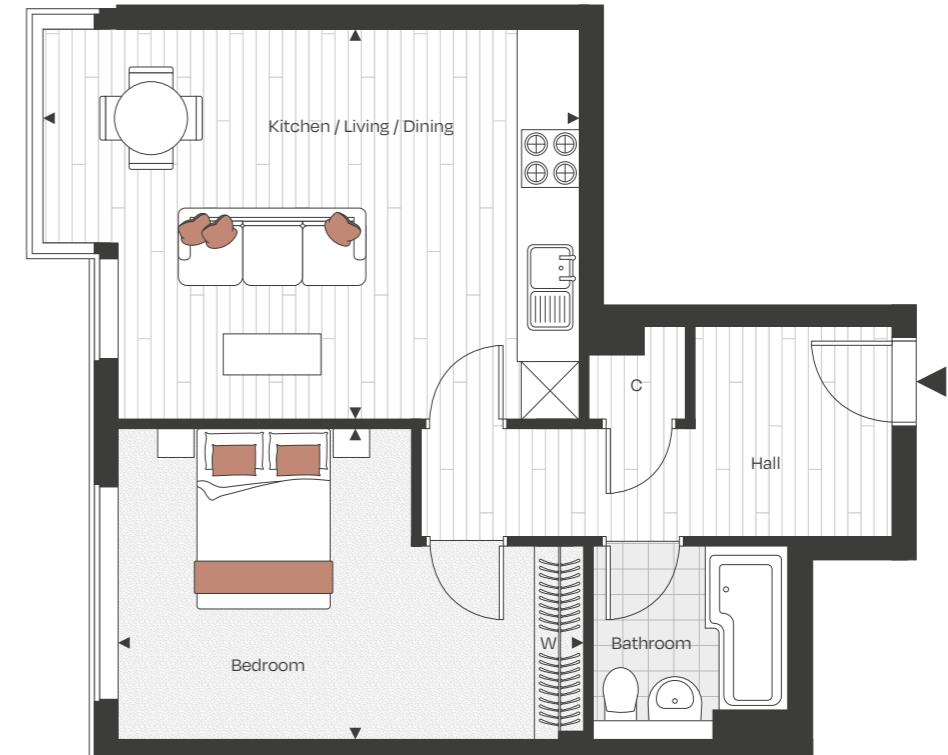
- ◄► Measurement Points
- C Cupboard
- W Wardrobe

First Floor



ONE BEDROOM

APARTMENT 06
FIRST FLOOR



Dimensions

Kitchen / Living / Dining	5.58m x 4.05m	18' 3" x 13' 3"
Bedroom	4.83m x 3.23m	15' 10" x 10' 7"

Key

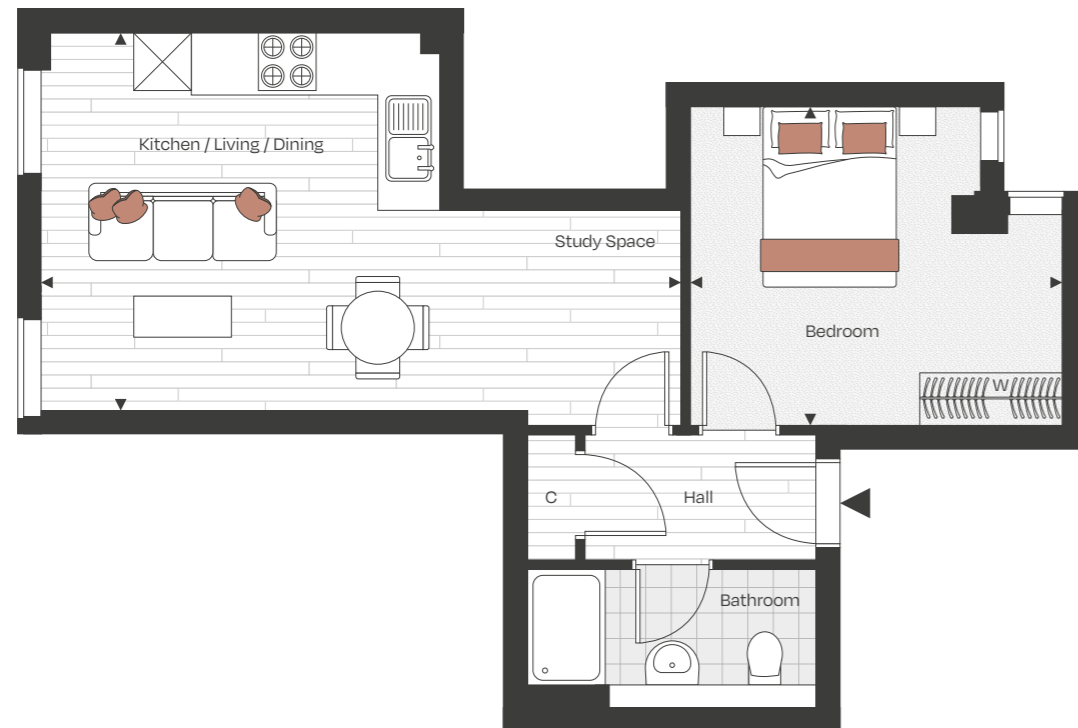
- ◄► Measurement Points
- C Cupboard
- W Wardrobe

First Floor



ONE BEDROOM

APARTMENT 07
FIRST FLOOR



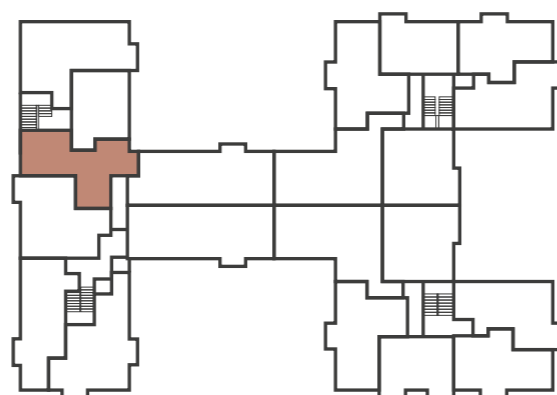
Dimensions

Kitchen / Living / Dining	6.65m x 3.92m	21' 9" x 12' 10"
Bedroom	3.86m x 3.30m	12' 7" x 10' 9"

Key

- ◀▶ Measurement Points
- C Cupboard
- W Wardrobe

First Floor



ONE BEDROOM

APARTMENT 10
FIRST FLOOR



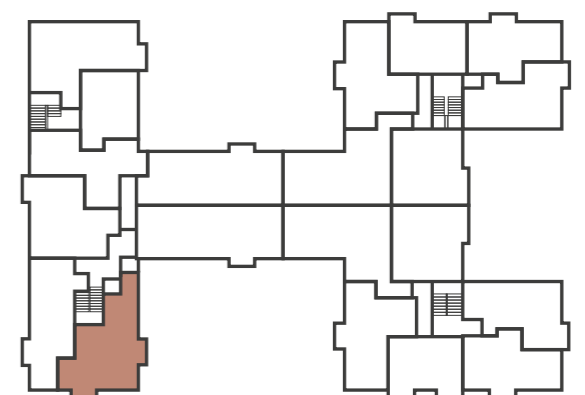
Dimensions

Kitchen / Living / Dining	8.53m x 4.42m	27' 11" x 14' 6"
Bedroom	3.52m x 3.40m	11' 6" x 11' 1"

Key

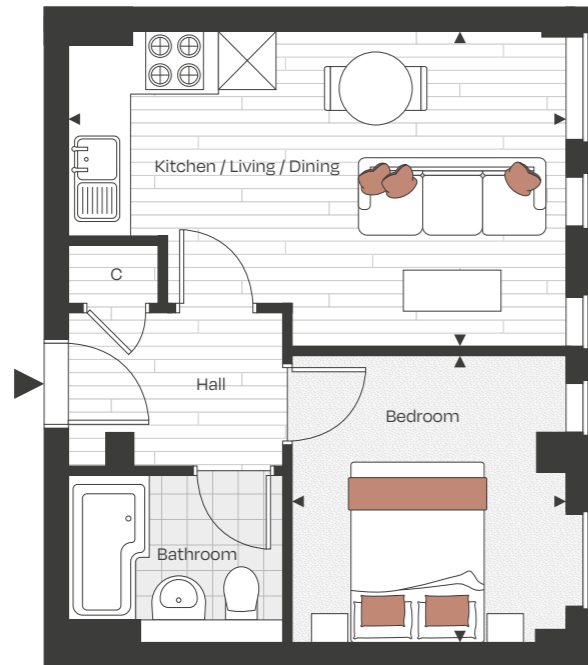
- ◀▶ Measurement Points
- C Cupboard
- W Wardrobe

First Floor



ONE BEDROOM

APARTMENT 12
GROUND FLOOR



Dimensions

Kitchen / Living / Dining	5.18m x 3.27m	16' 11" x 10' 8"
Bedroom	2.98m x 2.84m	9' 9" x 9' 3"

Key

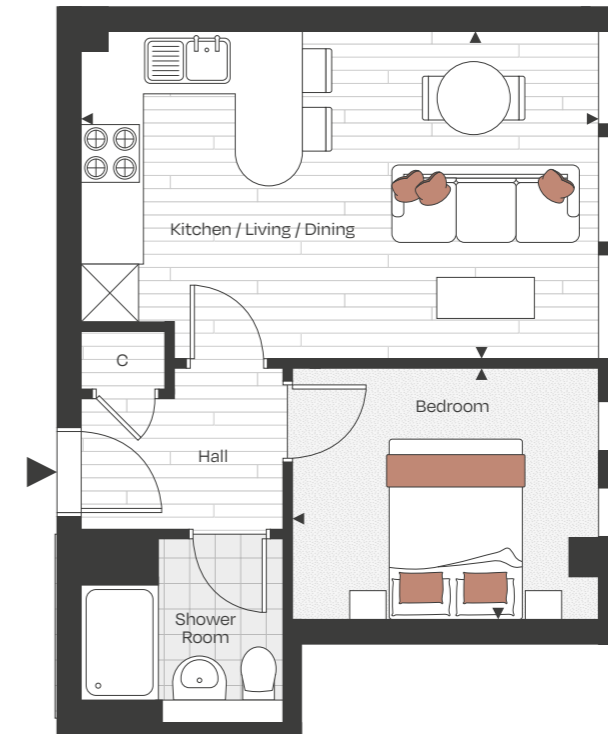
- ◄► Measurement Points
- C Cupboard
- W Wardrobe

Ground Floor



ONE BEDROOM

APARTMENT 14
FIRST FLOOR



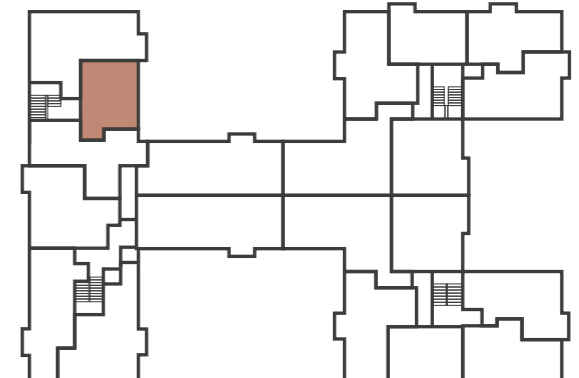
Dimensions

Kitchen / Living / Dining	5.37m x 3.39m	17' 7" x 11' 1"
Bedroom	3.17m x 2.61m	10' 4" x 8' 6"

Key

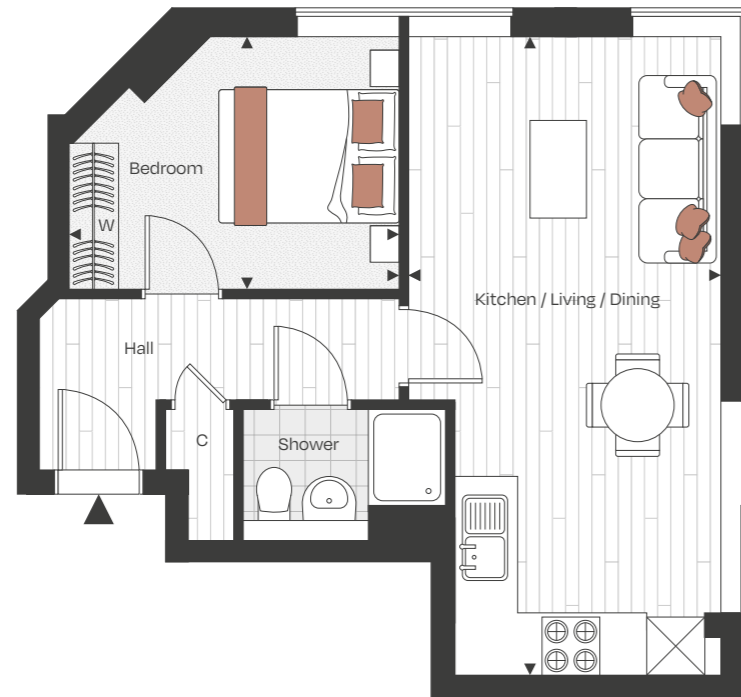
- ◄► Measurement Points
- C Cupboard
- W Wardrobe

First Floor



ONE BEDROOM

APARTMENT 15
GROUND FLOOR



Dimensions

Kitchen / Living / Dining	6.62m x 3.24m	21' 8" x 10' 7"
Bedroom	3.42m x 2.62m	11' 2" x 8' 7"

Key

- ◄► Measurement Points
- C Cupboard
- W Wardrobe

Ground Floor



ONE BEDROOM

APARTMENT 16
GROUND FLOOR



Dimensions

Kitchen / Living / Dining	4.27m x 3.96m	14' 0" x 12' 11"
Bedroom	2.91m x 2.87m	9' 6" x 9' 4"

Key

- ◄► Measurement Points
- C Cupboard
- W Wardrobe

Ground Floor



ONE BEDROOM

APARTMENT 17
GROUND FLOOR



Dimensions

Kitchen / Living / Dining	4.99m x 4.14m	16' 4" x 13' 6"
Bedroom	3.05m x 2.69m	10' 0" x 8' 9"

Key

- ◀▶ Measurement Points
- C Cupboard
- W Wardrobe

Ground Floor



ONE BEDROOM

APARTMENT 18
GROUND FLOOR



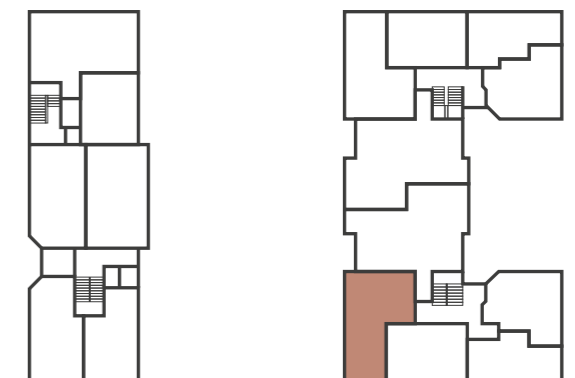
Dimensions

Kitchen / Living / Dining	7.03m x 3.77m	23' 0" x 12' 4"
Bedroom	3.88m x 2.60m	12' 8" x 8' 6"

Key

- ◀▶ Measurement Points
- C Cupboard
- W Wardrobe

Ground Floor



ONE BEDROOM

APARTMENT 20
FIRST FLOOR



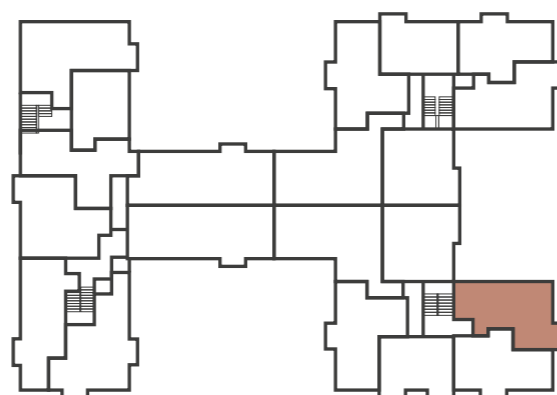
Dimensions

Kitchen / Living / Dining	5.97m x 4.08m	19' 7" x 13' 4"
Bedroom	3.21m x 3.12m	10' 6" x 10' 2"

Key

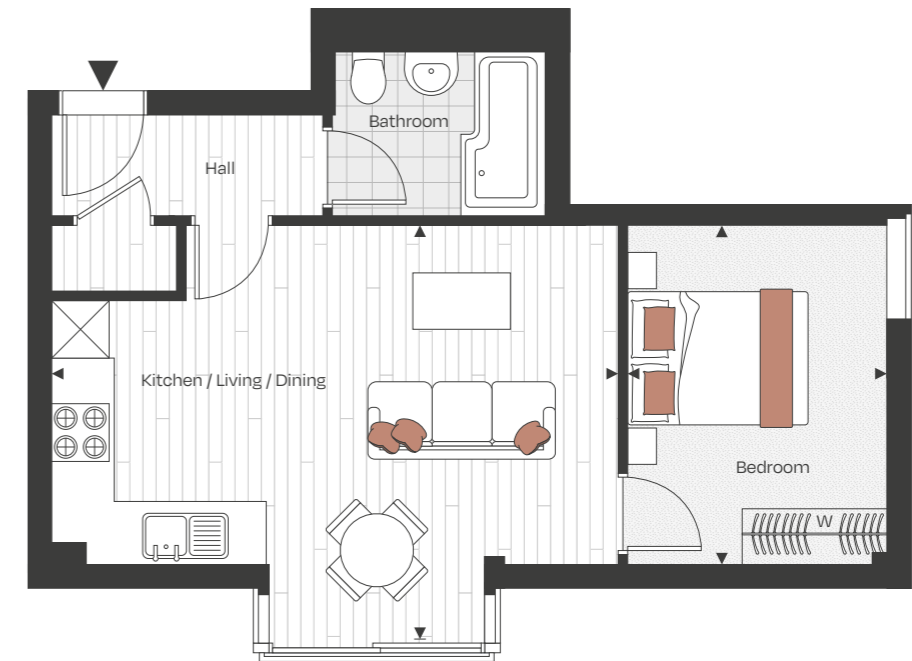
- ◄► Measurement Points
- C Cupboard
- W Wardrobe

First Floor



ONE BEDROOM

APARTMENT 21
FIRST FLOOR



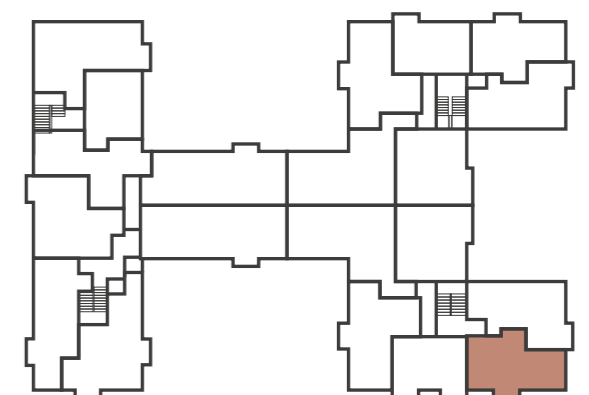
Dimensions

Kitchen / Living / Dining	5.97m x 4.08m	19' 7" x 13' 4"
Bedroom	3.52m x 2.69m	11' 6" x 8' 9"

Key

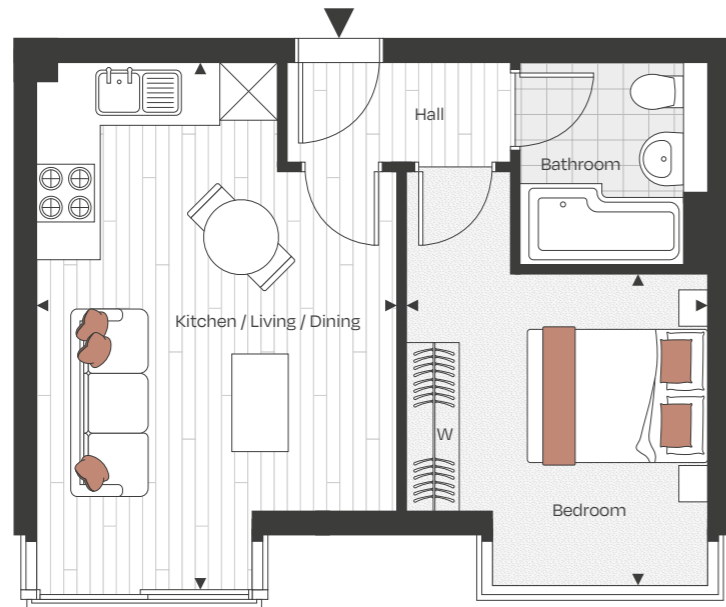
- ◄► Measurement Points
- C Cupboard
- W Wardrobe

First Floor



ONE BEDROOM

APARTMENT 22
FIRST FLOOR



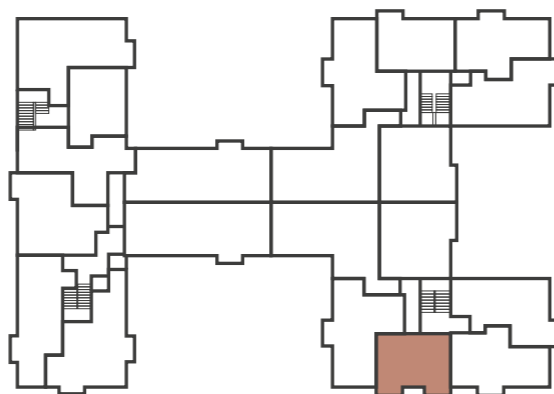
Dimensions

Kitchen / Living / Dining	5.48m x 3.73m	17' 11" x 12' 2"
Bedroom	3.23m x 3.11m	10' 7" x 10' 2"

Key

- ◀▶ Measurement Points
- C Cupboard
- W Wardrobe

First Floor



ONE BEDROOM

APARTMENT 23
FIRST FLOOR



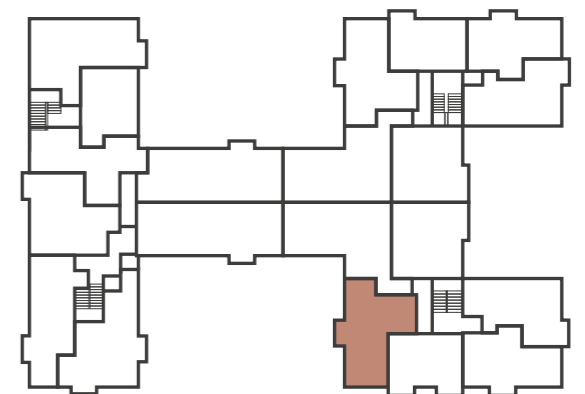
Dimensions

Kitchen / Living / Dining	5.99m x 4.80m	19' 7" x 15' 8"
Bedroom	3.63m x 2.97m	11' 10" x 9' 8"

Key

- ◀▶ Measurement Points
- C Cupboard
- W Wardrobe

First Floor



ONE BEDROOM

APARTMENT 25
FIRST FLOOR



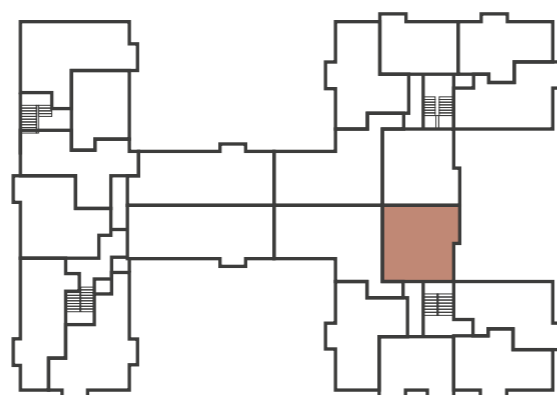
Dimensions

Kitchen / Living / Dining	6.95m x 3.52m	22' 9" x 11' 6"
Bedroom	3.27m x 3.13m	10' 8" x 10' 3"

Key

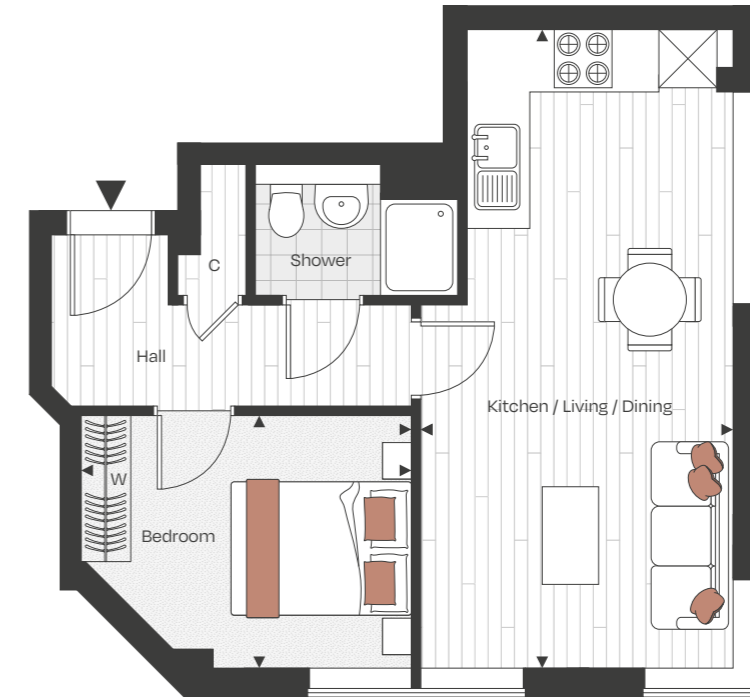
- ◄► Measurement Points
- C Cupboard
- W Wardrobe

First Floor



ONE BEDROOM

APARTMENT 26
GROUND FLOOR



Dimensions

Kitchen / Living / Dining	6.63m x 3.24m	21' 9" x 10' 7"
Bedroom	3.42m x 2.62m	11' 2" x 8' 7"

Key

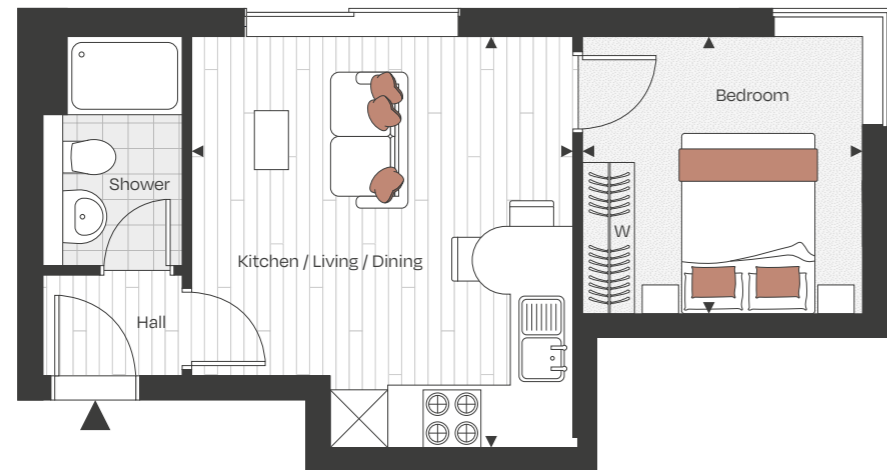
- ◄► Measurement Points
- C Cupboard
- W Wardrobe

Ground Floor



ONE BEDROOM

APARTMENT 27
GROUND FLOOR



Dimensions

Kitchen / Living / Dining	4.26m x 3.96m	13' 11" x 12' 11"
Bedroom	2.92m x 2.87m	9' 6" x 9' 4"

Key

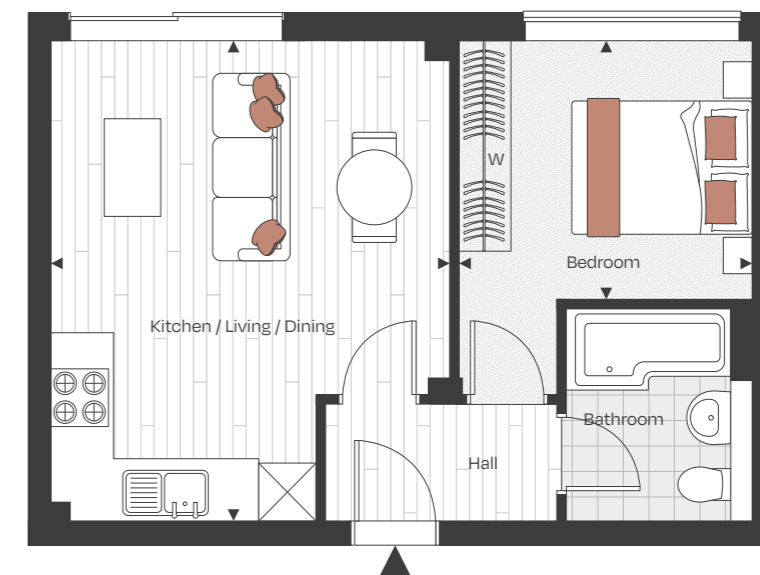
- ◄► Measurement Points
- C Cupboard
- W Wardrobe

Ground Floor



ONE BEDROOM

APARTMENT 28
GROUND FLOOR



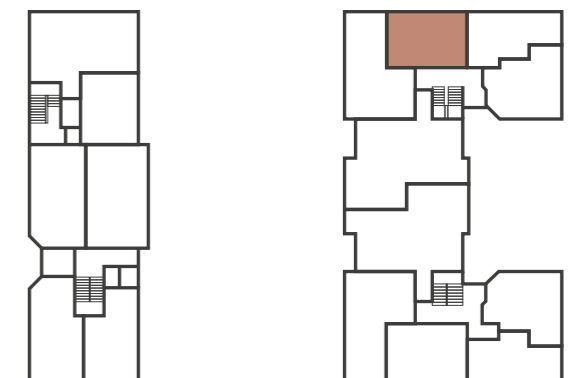
Dimensions

Kitchen / Living / Dining	5.00m x 4.15m	16' 4" x 13' 7"
Bedroom	3.04m x 2.69m	9' 11" x 8' 9"

Key

- ◄► Measurement Points
- C Cupboard
- W Wardrobe

Ground Floor



ONE BEDROOM

APARTMENT 29
GROUND FLOOR



Dimensions

Kitchen / Living / Dining	7.03m x 3.78m	23' 0" x 12' 4"
Bedroom	3.89m x 2.60m	12' 9" x 8' 6"

Key

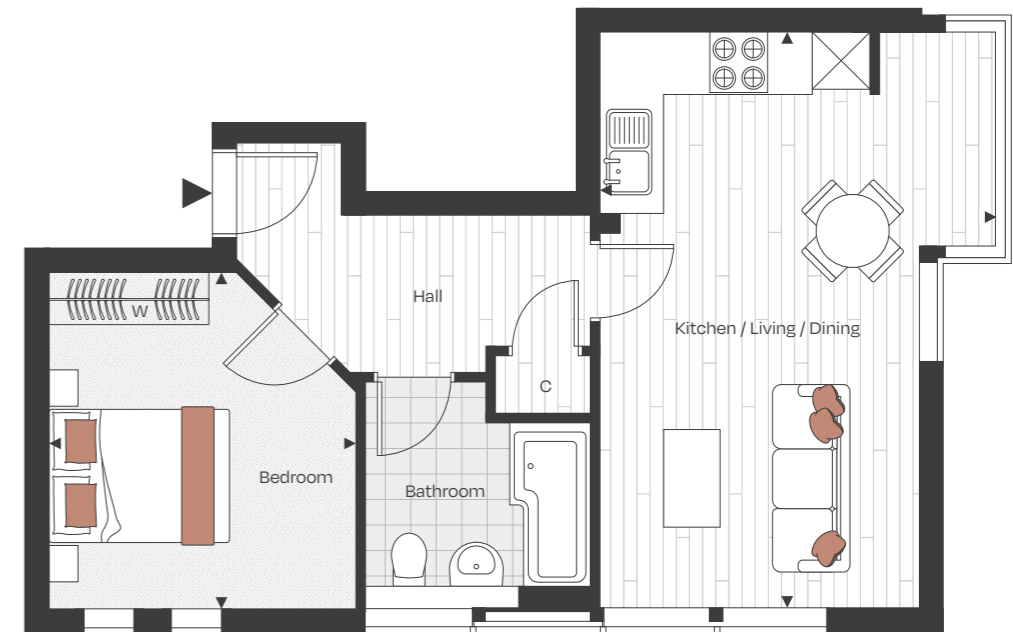
- ◀▶ Measurement Points
- C Cupboard
- W Wardrobe

Ground Floor



ONE BEDROOM

APARTMENT 31
FIRST FLOOR



Dimensions

Kitchen / Living / Dining	5.98m x 4.10m	19' 7" x 13' 5"
Bedroom	3.48m x 3.19m	11' 5" x 10' 5"

Key

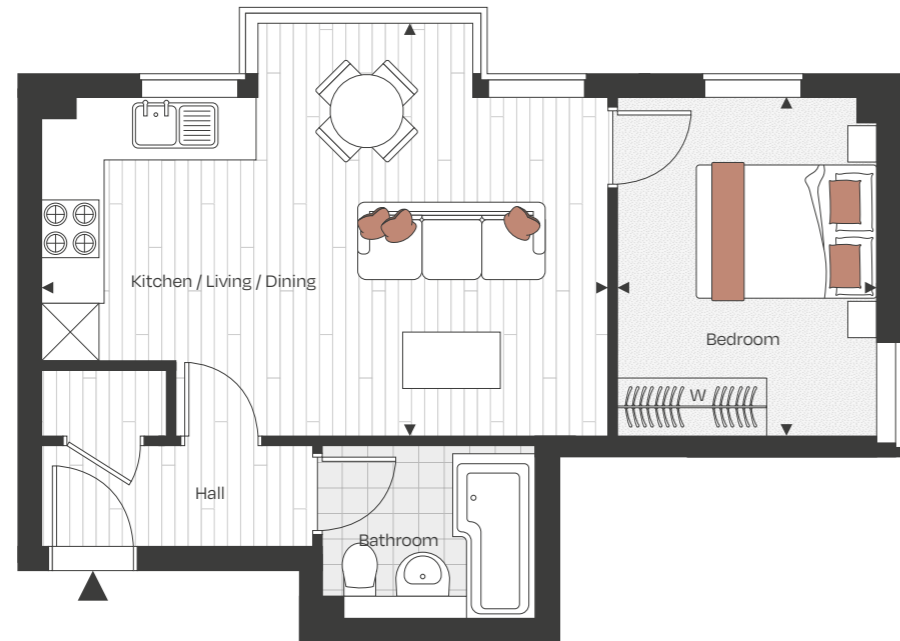
- ◀▶ Measurement Points
- C Cupboard
- W Wardrobe

First Floor



ONE BEDROOM

APARTMENT 32
FIRST FLOOR



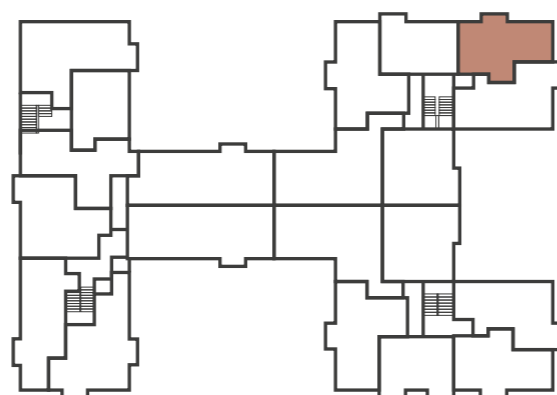
Dimensions

Kitchen / Living / Dining	5.91m x 4.28m	19' 4" x 14' 0"
Bedroom	3.51m x 2.70m	11' 6" x 8' 10"

Key

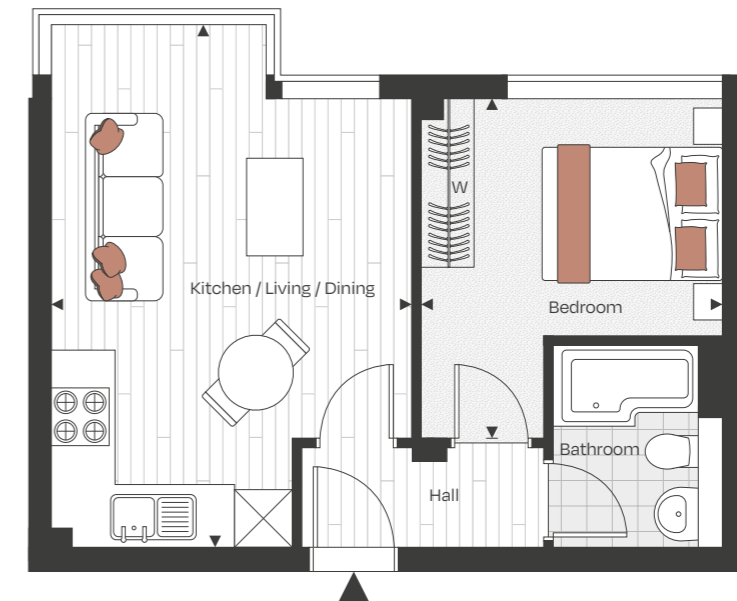
- ◄► Measurement Points
- C Cupboard
- W Wardrobe

First Floor



ONE BEDROOM

APARTMENT 33
FIRST FLOOR



Dimensions

Kitchen / Living / Dining	5.44m x 3.74m	17' 10" x 12' 3"
Bedroom	3.53m x 3.11m	11' 6" x 10' 2"

Key

- ◄► Measurement Points
- C Cupboard
- W Wardrobe

ONE BEDROOM

APARTMENT 34
FIRST FLOOR



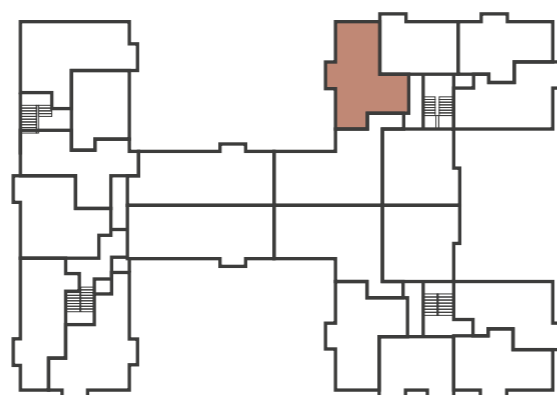
Dimensions

Kitchen / Living / Dining	5.99m x 4.80m	19' 7" x 15' 8"
Bedroom	3.65m x 2.78m	11' 11" x 9' 1"

Key

- ◄► Measurement Points
- C Cupboard
- W Wardrobe

First Floor



ONE BEDROOM

APARTMENT 36
FIRST FLOOR



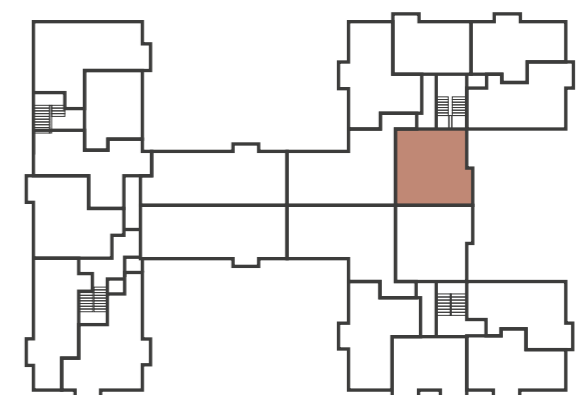
Dimensions

Kitchen / Living / Dining	6.95m x 3.52m	22' 9" x 11' 6"
Bedroom	3.27m x 3.14m	10' 8" x 10' 3"

Key

- ◄► Measurement Points
- C Cupboard
- W Wardrobe

First Floor





TWO BEDROOM APARTMENTS

TWO BEDROOM APARTMENTS



GROUND FLOOR



FIRST FLOOR



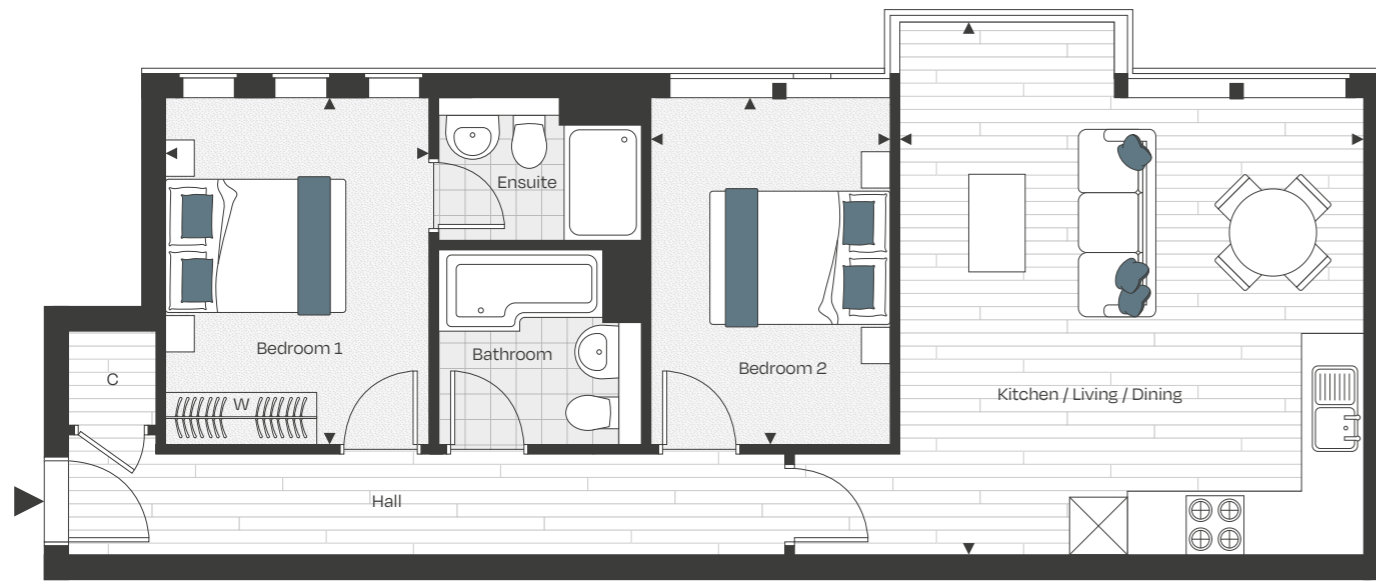
Key

One Bedroom Apartments

Two Bedroom Apartments

WATERSLADE HOUSE
TWO BEDROOMS

APARTMENT 08
 FIRST FLOOR



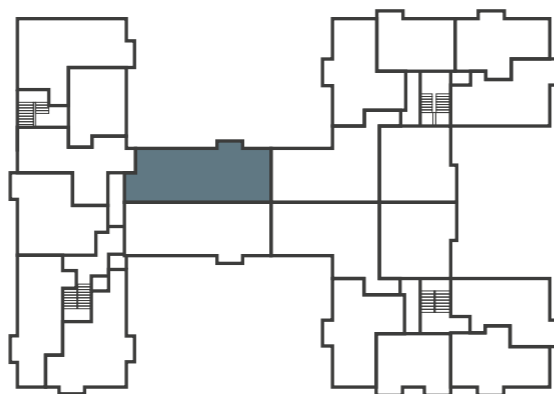
Dimensions

Kitchen / Living / Dining	5.54m x 4.81m	18' 2" x 15' 9"
Bedroom 1	3.62m x 2.73m	11' 10" x 8' 11"
Bedroom 2	3.60m x 2.49m	11' 9" x 8' 2"

Key

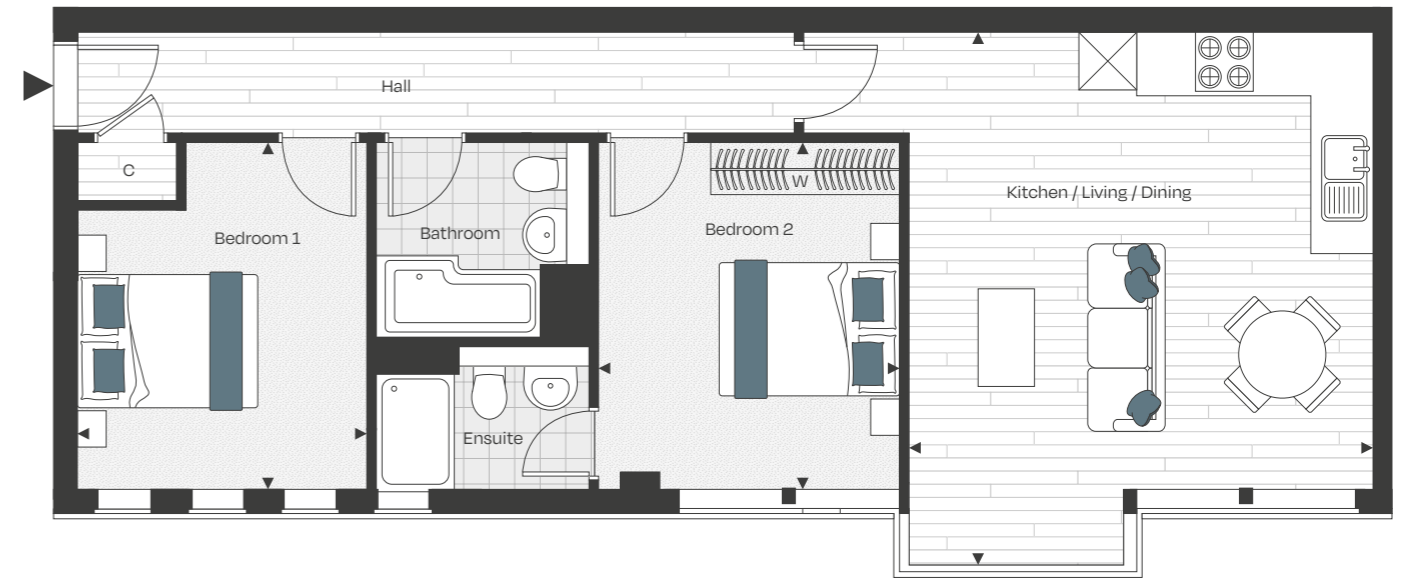
- ◄► Measurement Points
- C Cupboard
- W Wardrobe

First Floor



WATERSLADE HOUSE
TWO BEDROOMS

APARTMENT 09
 FIRST FLOOR



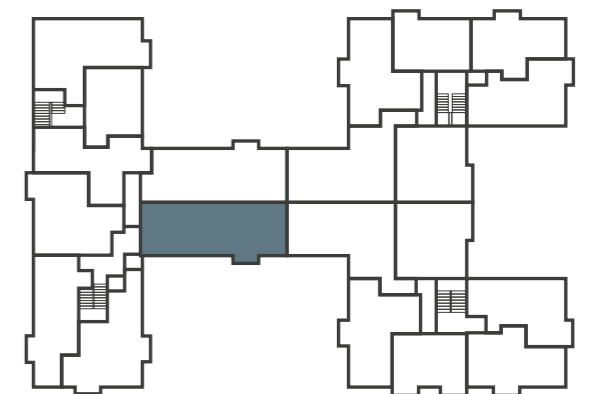
Dimensions

Kitchen / Living / Dining	5.52m x 4.81m	18' 1" x 15' 9"
Bedroom 1	3.59m x 3.12m	11' 9" x 10' 2"
Bedroom 2	3.57m x 3.02m	11' 8" x 9' 10"

Key

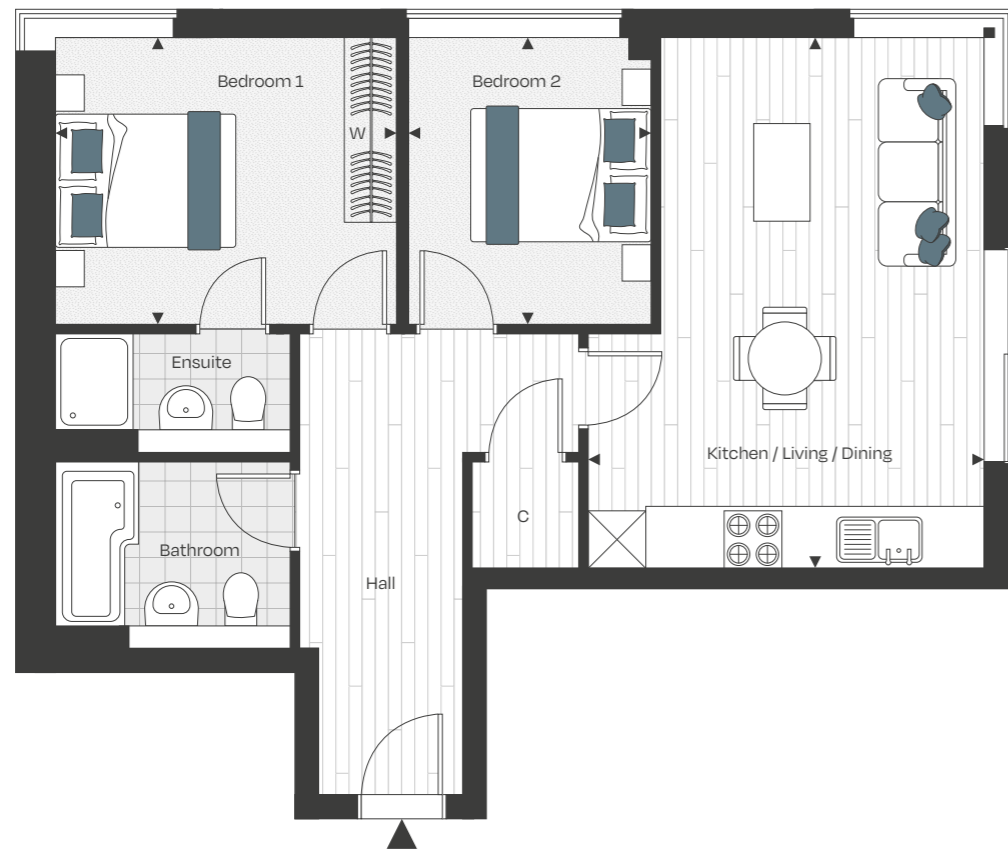
- ◄► Measurement Points
- C Cupboard
- W Wardrobe

Ground Floor



WATERSLADE HOUSE
TWO BEDROOMS

APARTMENT 11
 GROUND FLOOR



Dimensions

Kitchen / Living / Dining	5.51m x 4.11m	18' 0" x 13' 5"
Bedroom 1	3.53m x 2.96m	11' 6" x 9' 8"
Bedroom 2	2.97m x 2.51m	9' 8" x 8' 2"

Key

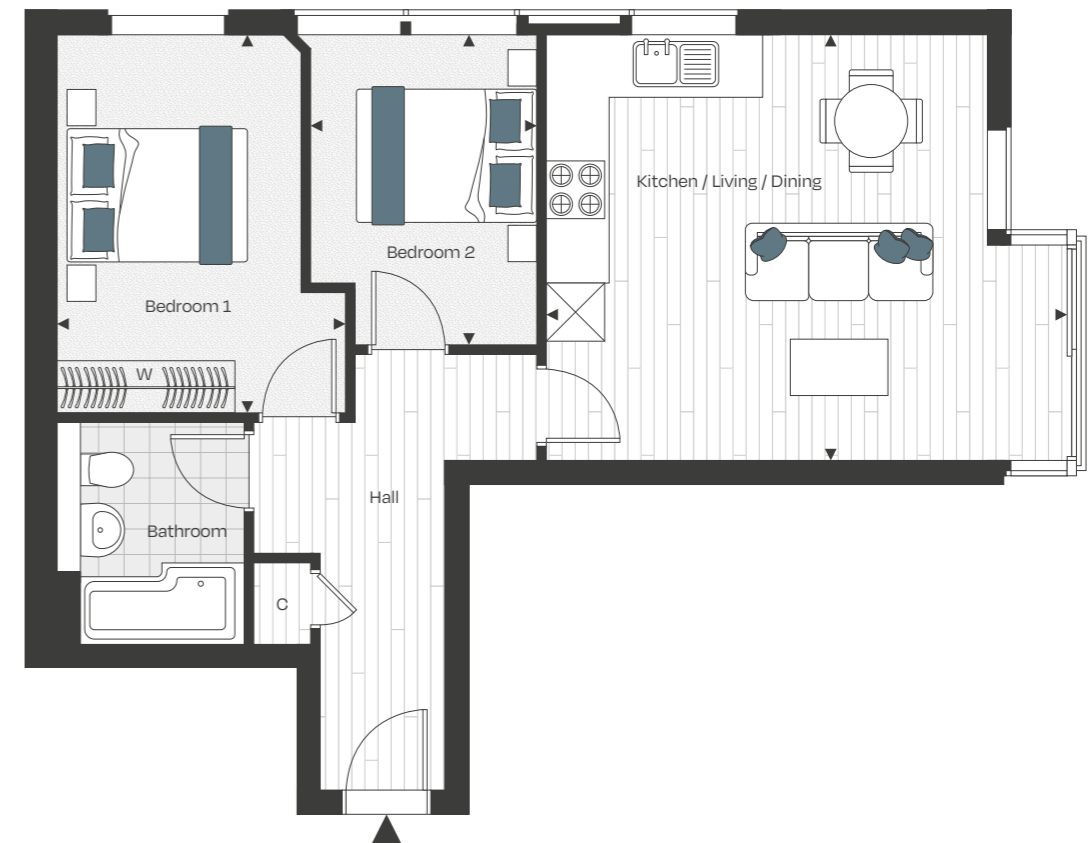
- ◀▶ Measurement Points
- C Cupboard
- W Wardrobe

Ground Floor



WATERSLADE HOUSE
TWO BEDROOMS

APARTMENT 13
 FIRST FLOOR



Dimensions

Kitchen / Living / Dining	5.41m x 4.42m	17' 8" x 14' 6"
Bedroom 1	3.92m x 2.51m	12' 10" x 8' 2"
Bedroom 2	3.21m x 2.48m	10' 6" x 8' 1"

Key

- ◀▶ Measurement Points
- C Cupboard
- W Wardrobe

First Floor



WATERSLADE HOUSE
TWO BEDROOMS

APARTMENT 19
 GROUND FLOOR



Dimensions

Kitchen / Living / Dining	8.80m x 4.60m	28' 10" x 15' 1"
Bedroom 1	3.25m x 3.13m	10' 7" x 10' 3"
Bedroom 2	3.25m x 2.86m	10' 7" x 9' 4"

Key

- ◄► Measurement Points
- C Cupboard
- W Wardrobe

Ground Floor



WATERSLADE HOUSE
TWO BEDROOMS

APARTMENT 24
 FIRST FLOOR



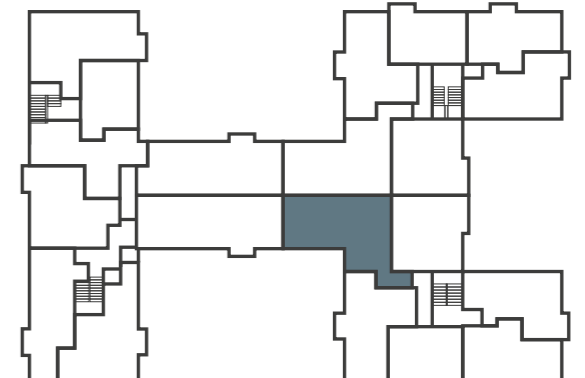
Dimensions

Kitchen / Living / Dining	4.86m x 4.76m	15' 11" x 15' 7"
Bedroom 1	3.02m x 2.93m	9' 10" x 9' 7"
Bedroom 2	2.93m x 2.03m	9' 7" x 6' 7"

Key

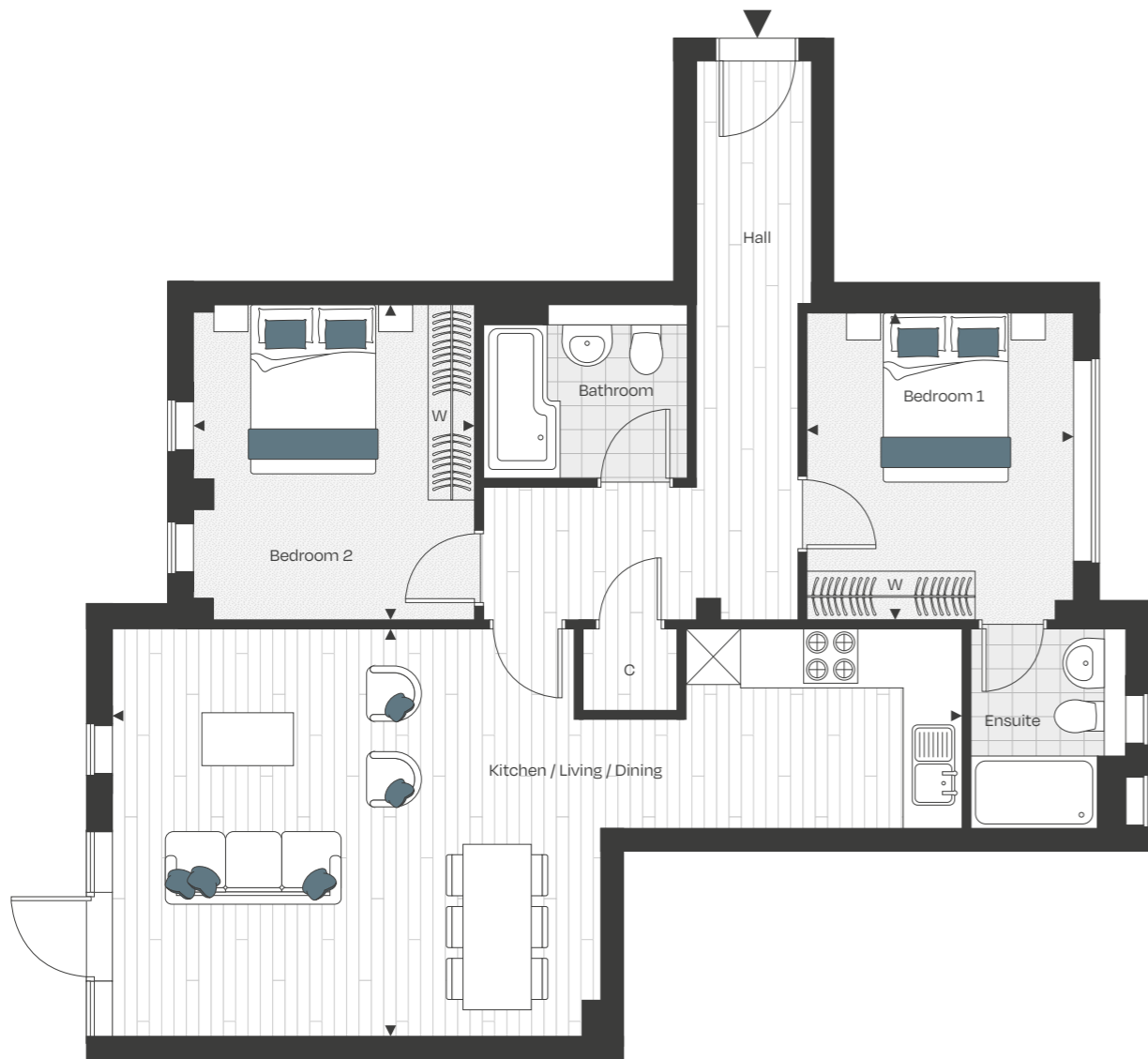
- ◄► Measurement Points
- C Cupboard
- W Wardrobe

Ground Floor



TWO BEDROOMS

APARTMENT 30
GROUND FLOOR



Dimensions

Kitchen / Living / Dining	9.41m x 4.52m	30' 10" x 14' 9"
Bedroom 1	3.40m x 2.96m	11' 1" x 9' 8"
Bedroom 2	3.50m x 3.11m	11' 5" x 10' 2"

Key

- ◀▶ Measurement Points
- C Cupboard
- W Wardrobe

Ground Floor



TWO BEDROOMS

APARTMENT 35
FIRST FLOOR



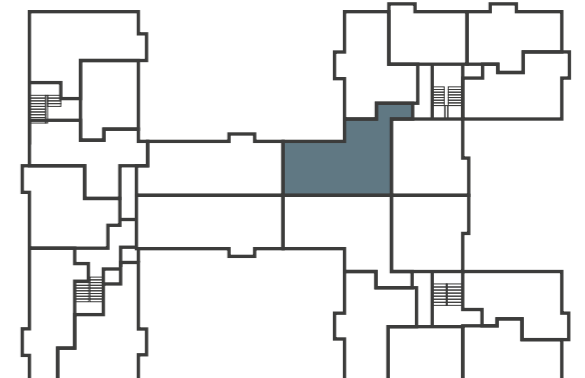
Dimensions

Kitchen / Living / Dining	4.82m x 4.73m	15' 9" x 15' 6"
Bedroom 1	3.01m x 2.93m	9' 10" x 9' 7"
Bedroom 2	2.93m x 2.03m	9' 7" x 6' 7"

Key

- ◀▶ Measurement Points
- C Cupboard
- W Wardrobe

First Floor



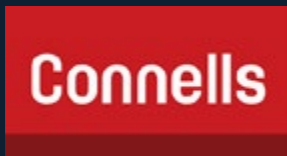


WATERSLADE HOUSE

• HADDENHAM •



Contact



Connells Estate Agents Thame

Open 6 days a week from 8.30am to 6.00pm

103 High Street, Thame, Oxfordshire, OX9 3DZ

T: 01844 260000

E: thame@connells.co.uk

connells.co.uk

Directions



Scan the QR code or click here for directions to Waterslade House

Thame Road, Haddenham,
Aylesbury, Buckinghamshire, HP17 8NT

The information in this document is indicative and is intended to act as a guide only as to the finished product. Accordingly, due to our policy of continuous improvement, the finished product may vary from the information provided. It may not be possible to provide the exact materials as referred to in the brochure. In such cases a suitable alternative will be provided. We reserve the right to make these changes as required. These particulars should not be relied upon as statements of fact or representations and applicants must satisfy themselves by inspection or otherwise as to their correctness. This information does not constitute a contract or warranty. The dimensions given on plans are subject to minor variations and are not intended to be used for carpet sizes, appliance sizes or items of furniture. Waterslade House is a marketing name and will not necessarily form part of the approved postal address.