



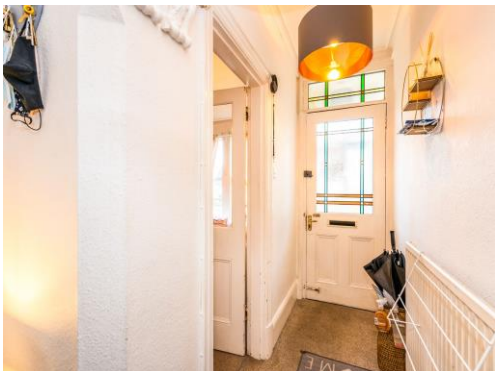
**Connells**

Bath Terrace Victoria Road  
Bicester



# Bath Terrace Victoria Road Bicester OX26 6PR

for sale  
**£320,000**



## Property Description

This property is located in the historic market town of Bicester. Within walking distance of Bicester town centre where you will find a wide range of local amenities including restaurants, shops and Pioneer Square development with multi-screen cinema and Sainsbury's superstore. Local schools include Longfields Primary School, Glory Farm Primary school and The Cooper School.

The property itself is approximately 0.5 miles from Bicester North station (connecting to Chiltern Railways line between Birmingham and London Marylebone) and approximately 0.6 miles from Bicester Village station (connecting to the Chiltern Railways line between Oxford and London Marylebone).

The M40 motorway is approximately 4.0 miles away and provides you with direct motorway links to London and Birmingham.

### Key Features

- THREE BEDROOMS
- FITTED KITCHEN
- GOOD DECOR
- NO CHAIN
- OFF ROAD PARKING
- CHARACTER FEATURES
- CLOSE TO TOWN CENTRE
- FIRST FLOOR BATHROOM

### Entrance Hall

### Lounge

12' 2" x 10' 9" ( 3.71m x 3.28m )

### Dining Room

11' 4" x 8' 8" ( 3.45m x 2.64m )

### Kitchen

9' 10" x 7' 4" ( 3.00m x 2.24m )

### Bathroom

### Landing

### Bedroom One

14' x 9' 11" ( 4.27m x 3.02m )

### Bedroom Two

7' 11" x 11' 5" ( 2.41m x 3.48m )

### Bedroom Three

9' 6" x 7' 6" ( 2.90m x 2.29m )

### Out Building



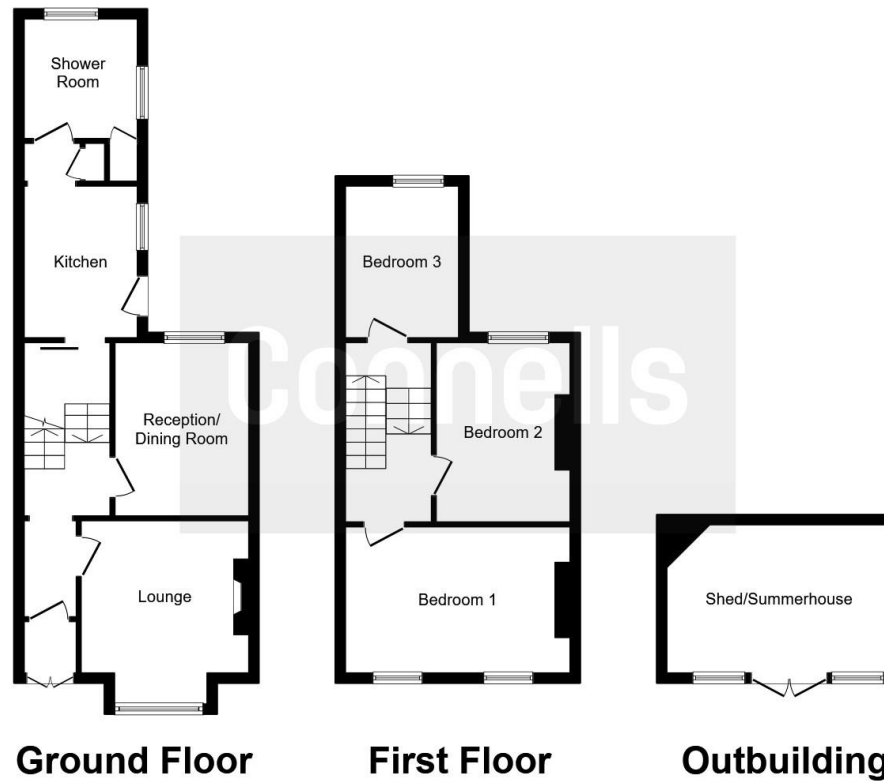












This floor plan is for illustrative purposes only. It is not drawn to scale. Any measurements, floor areas (including any total floor area), openings and orientation are approximate. No details are guaranteed, they cannot be relied upon for any purpose and they do not form part of any agreement. No liability is taken for any error, omission or misstatement. A party must rely upon its own inspection(s).  
Plan produced for Connells. Powered by [www.focalagent.com](http://www.focalagent.com)

To view this property please contact Connells on

**T 01869 244761**  
**E [bicester@connells.co.uk](mailto:bicester@connells.co.uk)**

5 Market Square  
BICESTER OX26 6AA

**EPC Rating: D**

Tenure: Freehold

**view this property online** [connells.co.uk/Property/ref-BIC306890](http://connells.co.uk/Property/ref-BIC306890)



1. MONEY LAUNDERING REGULATIONS Intending purchasers will be asked to produce identification documentation at a later stage and we would ask for your co-operation in order that there will be no delay in agreeing the sale. 2. These particulars do not constitute part or all of an offer or contract. 3. The measurements indicated are supplied for guidance only and as such must be considered incorrect. Potential buyers are advised to recheck measurements before committing to any expense. 4. We have not tested any apparatus, equipment, fixtures, fittings or services and it is in the buyers interest to check the working condition of any appliances.

**See all our properties at** [www.connells.co.uk](http://www.connells.co.uk) | [www.rightmove.co.uk](http://www.rightmove.co.uk) | [www.zoopla.co.uk](http://www.zoopla.co.uk)

Property Ref: BIC306890 - 0004