





### Property Description

Extended Three Bedroom End of Terrace Family Home - No Onward Chain

Offered to the market with no onward chain, this extended three-bedroom end of terrace home presents a fantastic opportunity for families or buyers looking for spacious and versatile accommodation in a well-connected location.

The ground floor features a bright living room, perfect for relaxing, alongside the generously extended kitchen, dining, and social area, ideal for modern family life and entertaining. A convenient ground floor shower room adds practicality and flexibility.

Upstairs, the property offers three well-proportioned bedrooms and a family bathroom, providing comfortable living space for growing families or those needing extra room for guests or a home office.

To the rear, a private garden offers outdoor space for play, relaxation, or gardening. Communal parking is available, ensuring convenience for residents and visitors alike.

Situated in a popular residential area, the property is well located for local schools, shops, and amenities, making it an ideal choice for families and commuters alike.

Don't miss the chance to make this extended home your own, with the added benefit of a chain-free purchase for a smoother move.





## Entrance Hall

Laminate Flooring, Access to Living room.  
Under Stairs storage and Stair's access

## Living Room

Laminate Flooring, Window to front of  
property.

## Kitchen And Dining Area

Tiled floor in Kitchen area, Wall and Base  
Units, integral oven hob and extractor, space  
for washing machine, dishwasher and fridge  
freezer. Laminate flooring in Dining area.

## Social Area

Tiled Floor, Skylight windows, Doors to  
Garden, access to Shower Room,

## Shower Room

Tiled floor and partially tiled walls, Walk in  
Shower area, WC, Basin, window to garden

## Landing

Carpet, access to bedrooms and bathroom.  
Loft access point

## Bedroom One

Double Bedroom, Carpet, window to front of  
property

## Bedroom Two

Double Bedroom, Carpet, window to rear of  
property

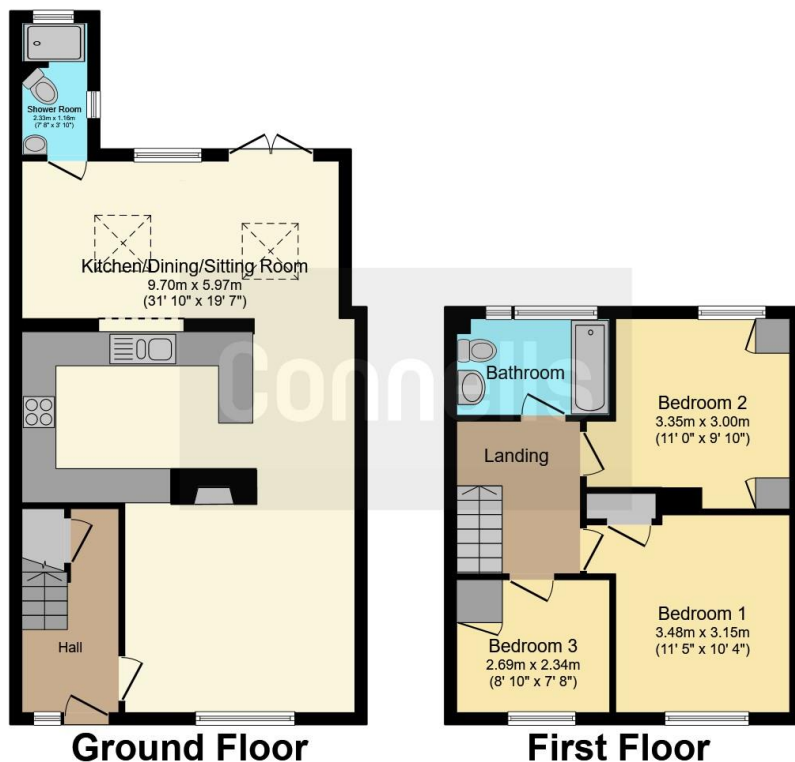
## Bedroom Three

Single bedroom, window to front of property

## Bathroom

Vinyl Floor, Bath with overhead Electric  
Shower, WC, Basin and Towel Rail, window  
to rear of property





Total floor area 99.3 m<sup>2</sup> (1,069 sq.ft.) approx

This floor plan is for illustrative purposes only. It is not drawn to scale. Any measurements, floor areas (including any total floor area), openings and orientation are approximate. No details are guaranteed, they cannot be relied upon for any purpose and they do not form part of any agreement. No liability is taken for any error, omission or misstatement. A party must rely upon its own inspection(s). Powered by [www.focalagent.com](http://www.focalagent.com)

To view this property please contact Connells on

**T 01869 244761**  
**E [bicester@connells.co.uk](mailto:bicester@connells.co.uk)**

5 Market Square  
BICESTER OX26 6AA

EPC Rating: D Council Tax  
Band: C

**view this property online [connells.co.uk/Property/BIC309304](http://connells.co.uk/Property/BIC309304)**

Tenure: Freehold



1. MONEY LAUNDERING REGULATIONS Intending purchasers will be asked to produce identification documentation at a later stage and we would ask for your co-operation in order that there will be no delay in agreeing the sale. 2. These particulars do not constitute part or all of an offer or contract. 3. The measurements indicated are supplied for guidance only and as such must be considered incorrect. Potential buyers are advised to recheck measurements before committing to any expense. 4. We have not tested any apparatus, equipment, fixtures, fittings or services and it is in the buyers interest to check the working condition of any appliances.

Connells Residential is registered in England and Wales under company number 1489613, Registered Office is Cumbria House, 16-20 Hockliffe Street, Leighton Buzzard, Bedfordshire, LU7 1GN. VAT Registration Number is 500 2481 05.

**See all our properties at [www.connells.co.uk](http://www.connells.co.uk) | [www.rightmove.co.uk](http://www.rightmove.co.uk) | [www.zoopla.co.uk](http://www.zoopla.co.uk)**

Property Ref: BIC309304 - 0006

