

For Sale

£540,000



Fallowfields Bicester OX26 6QS

This well presented Five Bedroom family home, located well for Bicester Town Centre and Transport links, has a spacious flow featuring a Kitchen Diner and utility, living room and additional reception room, five bedrooms, bathroom, ensuite, driveway and garage, plus an extensive rear garden

Fallowfields Bicester OX26 6QS

Entrance Porch: Tiled Floor, Oak and Glazed Door access to Entrance Hall

Entrance Hall: Carpet, access to Cloakroom, Living room, Kitchen and stairs. Storage cupboard.

Cloakroom: Oak Door, Tiled Floor, Partially tiled walls, WC, Basin and Heater

Living Room: Double Oak and Glazed Doors, Window to front of property fitted with shutters. Carpet. Electric Fire place feature (original fire place behind) LED Wall Lights. Glazed Double Door access to Dining Area

Dining Area: Tiled Floor, Patio Doors for Garden access, Archway to Kitchen

Kitchen: Tiled Floor, wall and base units, Smeg range oven and Extractor, integral dishwasher, Oak door to pantry cupboard, window to garden, Oak and Glazed door to entrance hall, Oak and Glazed door access to utility room, additional reception room and side door access to garden

Utility Room: Oak Door, Laminate Flooring, Wall and Base units, space for Washing Machine and Freezer. Access to integral Garage

Additional Reception Room: Oak Door, Two Windows to Garden. Lift access point

Landing: Split landing, Carpet, access to all bedrooms and bathroom, Loft access point

Bedroom One: Oak Door, Double Bedroom, Carpet, Lift access point, Window to rear of property. Access to En-suite.

En-suite: Oak Door, Under Floor Heating, Aqualisa Shower in Shower Cubicle, WC, Basin, Window to side of property

Bedroom Two: Oak Door, Double Bedroom, Carpet, Built in Storage, Window to rear of property

Bedroom Three: Oak Door, Double Bedroom, Carpet, Double Built in Storage, Window to front of property

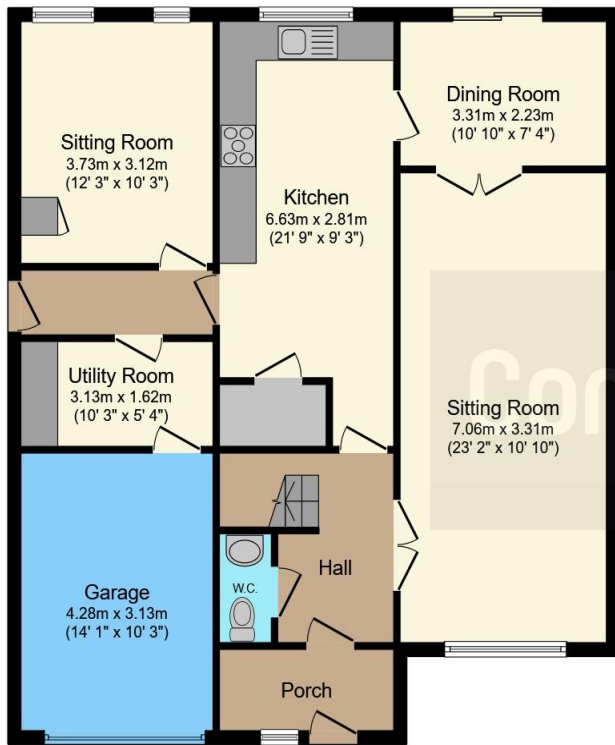
Bedroom Four: Oak Door, Double Bedroom, Carpet, Window to rear of property

Bedroom Five: Oak Door, Single Bedroom, Carpet, window to front of property

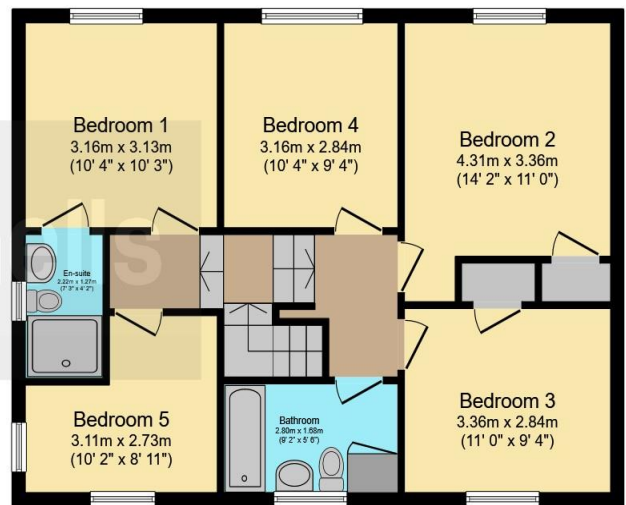
Family Bathroom: Oak Door, Tiled Floor and Partially Tiled Walls, Bath with Aqualisa Shower, WC, Basin, Towel Rail, Oak Door to Airing Cupboard







Ground Floor



First Floor

Total floor area 168.4 m² (1,813 sq.ft.) approx

This floor plan is for illustrative purposes only. It is not drawn to scale. Any measurements, floor areas (including any total floor area), openings and orientation are approximate. No details are guaranteed, they cannot be relied upon for any purpose and they do not form part of any agreement. No liability is taken for any error, omission or misstatement. A party must rely upon its own inspection(s). Powered by www.focalagent.com

To view this property please contact Connells on

T 01869 244761
E bicester@connells.co.uk

5 Market Square
BICESTER OX26 6AA

Property Ref: BIC309200 - 0012

Tenure: Freehold

EPC Rating: C

[check out more properties at connells.co.uk](http://www.connells.co.uk)



1. MONEY LAUNDERING REGULATIONS Intending purchasers will be asked to produce identification documentation at a later stage and we would ask for your co-operation in order that there will be no delay in agreeing the sale. 2. These particulars do not constitute part or all of an offer or contract. 3. The measurements indicated are supplied for guidance only and as such must be considered incorrect. Potential buyers are advised to recheck measurements before committing to any expense. 4. We have not tested any apparatus, equipment, fixtures, fittings or services and it is in the buyers interest to check the working condition of any appliances.

Connells Residential is registered in England and Wales under company number 1489613, Registered Office is Cumbria House, 16-20 Hockliffe Street, Leighton Buzzard, Bedfordshire, LU7 1GN. VAT Registration Number is 500 2481 05.

see all our properties at www.connells.co.uk | www.rightmove.co.uk | www.zoopla.co.uk