



Connells

Wentwood, Heathfield
Bletchington, Kidlington

Wentwood, Heathfield Bletchingdon, Kidlington OX5 3DX

for sale offers in excess of
£270,000



Property Description

The Wentwood is a spacious, well-designed two double bedroom 50ft x 22ft Luxury Lodge, located in an idyllic rural setting in Heathfield, just outside the picturesque village of Bletchingdon.

When entering the property, you have the open plan living dining area, designed with a vaulted ceiling, full height windows to the lounge and dining room sides allow a light and spacious feeling throughout, with the potential to have a bespoke design, along with modern integrated appliances in the kitchen and with the added utility area, you can ensure the luxury lodge is complete to your taste.

The master bedroom boasts a walk-in wardrobe and en-suite, along with the second bedroom incorporating built-in storage, still a good size double bedroom. The Wentwood also the capacity for a study next to the family bathroom.

There is a wide range of packages to choose from to help you make your home unique to you.

Heathfield Park provides a great opportunity to

own your property on this newly development. Situated in rural surroundings and offering you the perfect location to relax in your very own luxury lodge.

****Cash Buyers Only****

Living And Dining Area

21' 2" extending to 10' 6" x 19' 2" (6.45m extending to 3.20m x 5.84m)

Kitchen

12' 2" x 10' 3" (3.71m x 3.12m)

Utility Room

Bedroom One

10' 3" x 12' 2" (3.12m x 3.71m)

Plus En-suite and Walk in Dressing Room

Bedroom Two

11' 9" x 10' 6" (3.58m x 3.20m)

Family Bathroom

Study

Location

Distance from Heathfield to:

Bicester - 6.7 miles

Oxford - 8.9 miles

Blenheim Palace - 7.1 miles

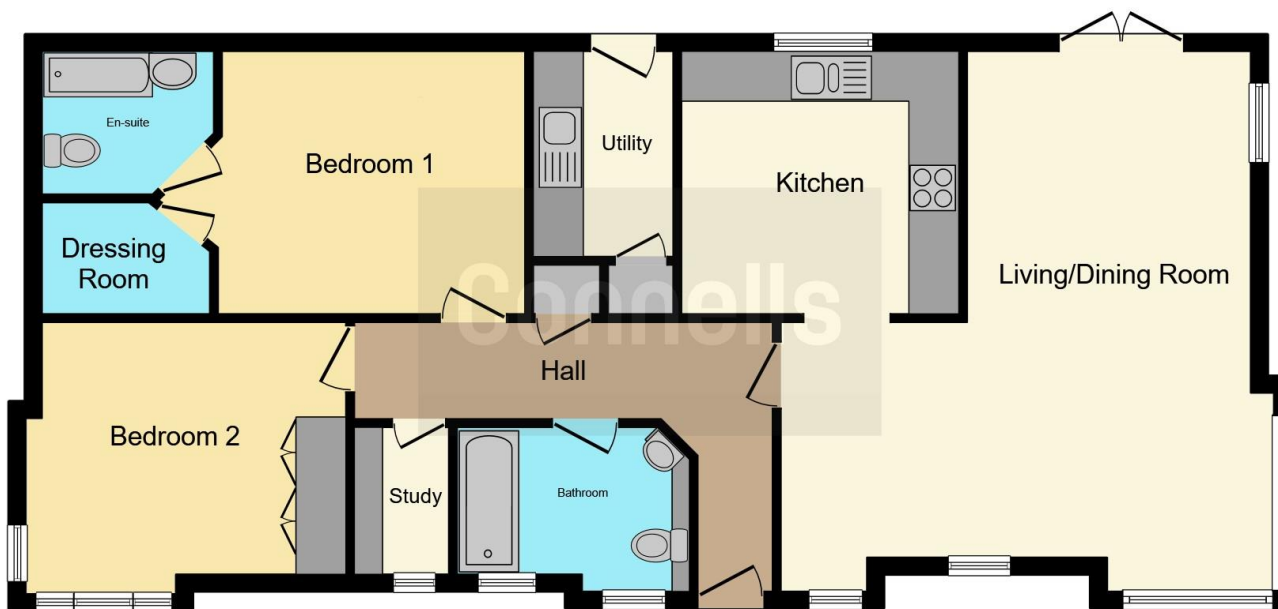
Islip Train Station - 2.0 miles

Other Key Features

****No Council Tax****

****No Stamp Duty****





This floor plan is for illustrative purposes only. It is not drawn to scale. Any measurements, floor areas (including any total floor area), openings and orientation are approximate. No details are guaranteed, they cannot be relied upon for any purpose and they do not form part of any agreement. No liability is taken for any error, omission or misstatement. A party must rely upon its own inspection(s). Powered by www.focalagent.com

To view this property please contact Connells on

T 01869 244761
E bicester@connells.co.uk

5 Market Square
 BICESTER OX26 6AA

EPC Rating: Exempt

view this property online connells.co.uk/Property/BIC308711

Tenure: Freehold



1. MONEY LAUNDERING REGULATIONS Intending purchasers will be asked to produce identification documentation at a later stage and we would ask for your co-operation in order that there will be no delay in agreeing the sale. 2. These particulars do not constitute part or all of an offer or contract. 3. The measurements indicated are supplied for guidance only and as such must be considered incorrect. Potential buyers are advised to recheck measurements before committing to any expense. 4. We have not tested any apparatus, equipment, fixtures, fittings or services and it is in the buyers interest to check the working condition of any appliances.

Connells Residential is registered in England and Wales under company number 1489613, Registered Office is Cumbria House, 16-20 Hockliffe Street, Leighton Buzzard, Bedfordshire, LU7 1GN. VAT Registration Number is 500 2481 05.

See all our properties at www.connells.co.uk | www.rightmove.co.uk | www.zoopla.co.uk

Property Ref: BIC308711 - 0004