



Connells

Parsons Piece
Banbury Banbury



Property Description

A stylish and beautiful home built three years ago by Morris Homes and forming part of the highly regarded Victoria Park development on the outskirts of Banbury town, close to Bloxham. The accommodation comprises an entrance hall, cloakroom, spacious sitting room, a superb open plan kitchen/dining room, three first floor bedrooms, Master Bedroom with en-suite and a further family bathroom, a double carport and lovely rear. The property benefits from a high build quality and the remainder of the NHBC Guarantee.

KEY FEATURES:

- KITCHEN AND DINING ROOM TO REAR
- SPACIOUS LOUNGE
- MASTER BEDROOM WITH EN-SUITE
- DOWNSTAIRS CLOAKROOM
- BEAUTIFUL ENCLOSED GARDEN
- ROCA SANITRYWARE
- FULLY FITTED KITCHEN WITH NEFF APPLIANCES
- THE PLACE TO LIVE IN BANBURY



Entrance Hall

Door to front aspect. Vinyl wood flooring. Radiator. Door to all ground floor accommodation.

Cloakroom

White fitted suite. Wash Hand Basin. WC. Partially tiled. Vinyl wood flooring. Radiator. Extractor Fan.

Lounge

19' 2" x 15' 10" max (5.84m x 4.83m max)
Window to front aspect. Stairs rising to first floor accommodation. Semi open plan access to Kitchen/Dining Room. Built in storage cupboard. Radiator.

Kitchen/dining Room

15' 9" x 9' 2" (4.80m x 2.79m)
Double glazed window to the rear aspect. French double doors opening to the garden. Fitted kitchen units with marble effect surfaces and risers. Gas fitted five ring hobs and oven. Fitted microwave, fridge/freezer, washing machine and dish washer. Recessed lighting. Ceramic floor tiles. Radiator. Boiler.

First Floor Landing

Built in storage cupboard. Radiator. Hatch to loft. Radiator. Doors to first floor accommodation.

Master Bedroom

11' 1" x 9' 1" (3.38m x 2.77m)
Double glazed window to the rear aspect. Built in double wardrobe. Radiator.

En-Suite

WC. Wash Hand Basin. Generous sized, built in shower cubicle. Wood effect vinyl flooring. Partially tiled. Recessed lighting. Extractor Fan. Finished white suite.

Bedroom Two

13' 1" x 9' 1" (3.99m x 2.77m)
Double glazed window to front aspect. Fitted triple wardrobe. Radiator.

Bedroom Three

10' 4" x 7' 7" (3.15m x 2.31m)
Double glazed window to front aspect. Single sized bedroom. Radiator.

Bathroom

Double glazed window to rear aspect. Wash Hand Basin. WC. Bath. Partially tiled. Vinyl wood effect flooring. Recessed lighting. Radiator. Finished white suite.

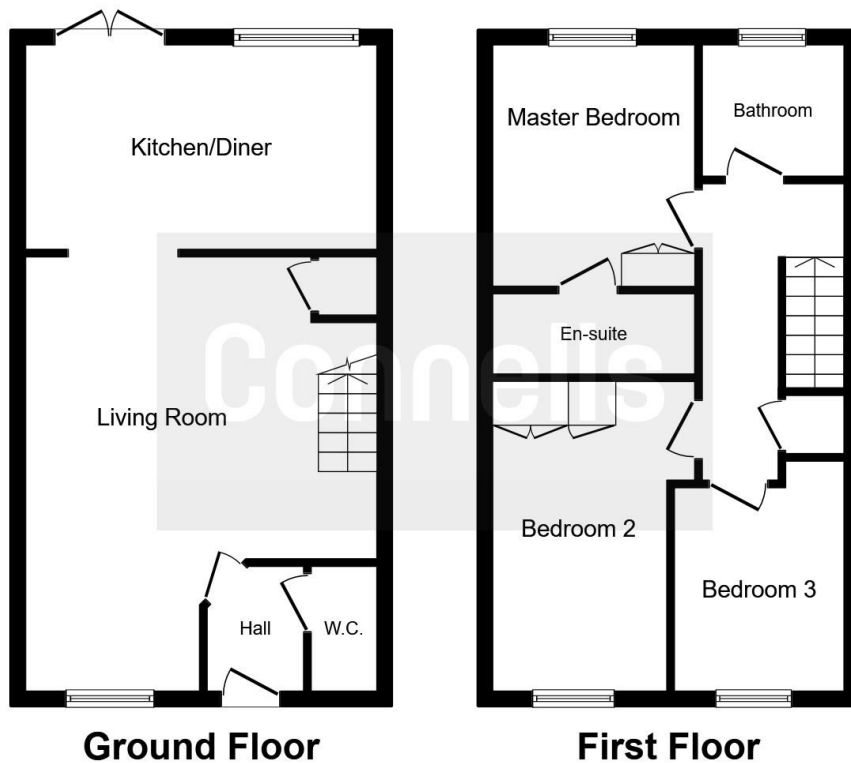
Front Garden

Two small trees. Cotswold stone wall.

Garden

Patio area. Lawn area. Shrubs. Gate access to the side aspect.





This floor plan is for illustrative purposes only. It is not drawn to scale. Any measurements, floor areas (including any total floor area), openings and orientation are approximate. No details are guaranteed, they cannot be relied upon for any purpose and they do not form part of any agreement. No liability is taken for any error, omission or misstatement. A party must rely upon its own inspection(s).
Plan produced for Connells. Powered by www.focalagent.com

To view this property please contact Connells on

T 01295 268 101
E banbury@connells.co.uk

33 Bridge Street
BANBURY OX16 5PN

EPC Rating: B

view this property online [connells.co.uk/Property/ref-BAN306806](https://www.connells.co.uk/Property/ref-BAN306806)



Tenure: Freehold



1. MONEY LAUNDERING REGULATIONS Intending purchasers will be asked to produce identification documentation at a later stage and we would ask for your co-operation in order that there will be no delay in agreeing the sale. 2. These particulars do not constitute part or all of an offer or contract. 3. The measurements indicated are supplied for guidance only and as such must be considered incorrect. Potential buyers are advised to recheck measurements before committing to any expense. 4. We have not tested any apparatus, equipment, fixtures, fittings or services and it is in the buyers interest to check the working condition of any appliances.

See all our properties at www.connells.co.uk | www.rightmove.co.uk | www.zoopla.co.uk

Property Ref: BAN306806 - 0005