



Connells

Kingerlee Road
Banbury



Property Description

Connells Estate Agents are delighted to present this spacious and immaculately presented two bedroom coach house located within a sought after development in the North of Banbury.

Accommodation comprises; entrance hall, a spacious open plan lounge/dining area/kitchen, two generous sized bedrooms and a family bathroom.

Outside; there is off street parking as well as a single garage. Additionally, there is an electric car charger point.

Connells Estate Agents are delighted to present this spacious and immaculately presented two bedroom coach house located within a sought after development in the North of Banbury.

Accommodation comprises; entrance hall, a spacious open plan lounge/dining area/kitchen, two generous sized bedrooms and a family bathroom.

Outside; there is off street parking as well as a single garage. Additionally, there is an electric car charger point.

Connells Estate Agents are delighted to present this spacious and immaculately presented two bedroom coach house located within a sought after development in the North of Banbury.

Accommodation comprises; entrance hall, a spacious open plan lounge/dining area/kitchen, two generous sized

bedrooms and a family bathroom.

Outside; there is off street parking as well as a single garage. Additionally, there is an electric car charger point.

Connells Estate Agents are delighted to present this spacious and immaculately presented two bedroom coach house located within a sought after development in the North of Banbury.

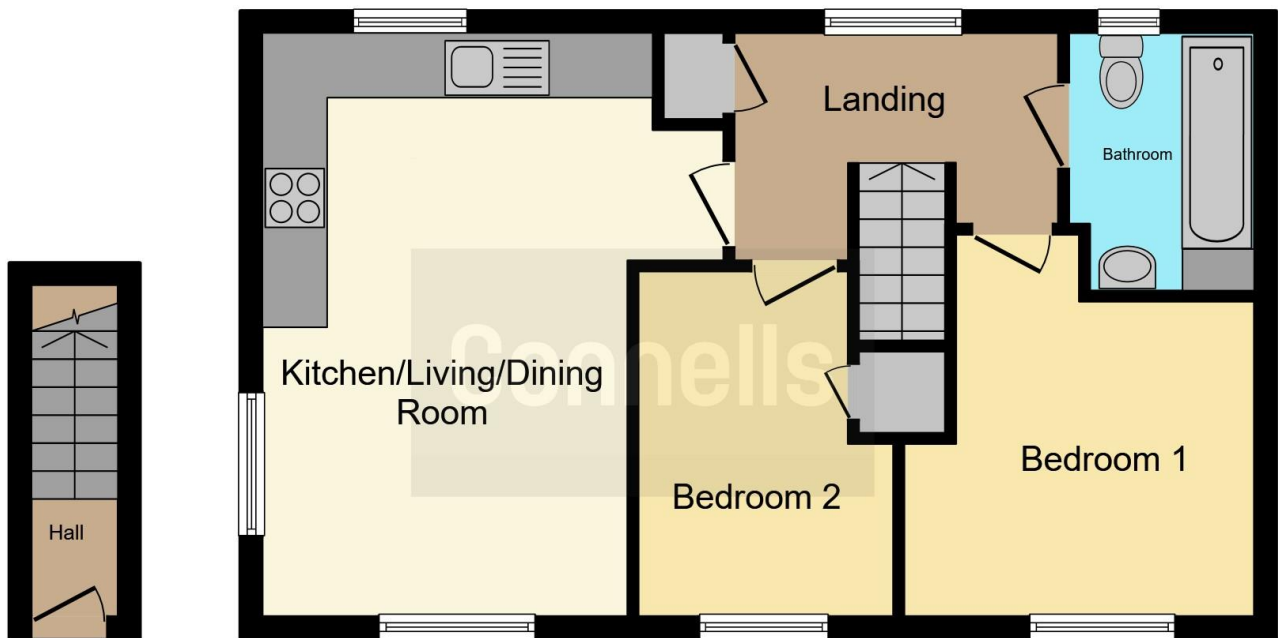
Accommodation comprises; entrance hall, a spacious open plan lounge/dining area/kitchen, two generous sized bedrooms and a family bathroom.

Outside; there is off street parking as well as a single garage. Additionally, there is an electric car charger point

KEY FEATURES.

- Immaculately presented
- Two generous sized bedrooms
- Open plan living
- Off street parking
- Garage
- Electric Car Charger Point
- Ideal for first time buyers
- Viewings highly recommended





**Ground
Floor**

First Floor

This floor plan is for illustrative purposes only. It is not drawn to scale. Any measurements, floor areas (including any total floor area), openings and orientation are approximate. No details are guaranteed, they cannot be relied upon for any purpose and they do not form part of any agreement. No liability is taken for any error, omission or misstatement. A party must rely upon its own inspection(s). Powered by www.focalagent.com

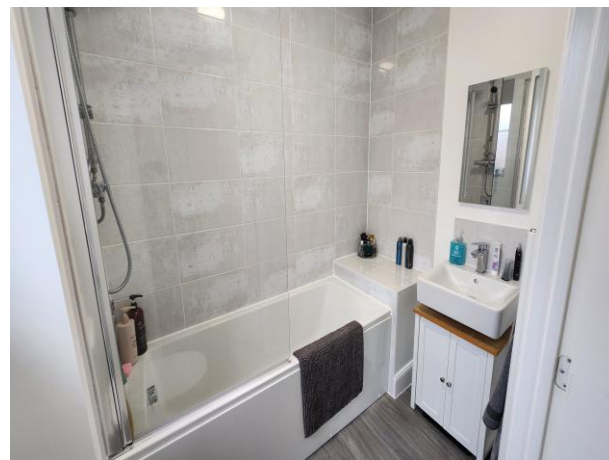
To view this property please contact Connells on

T 01295 268 101
E banbury@connells.co.uk

33 Bridge Street
BANBURY OX16 5PN

EPC Rating: B Council Tax
Band: B

view this property online connells.co.uk/Property/BAN309581



Tenure: Freehold



1. MONEY LAUNDERING REGULATIONS Intending purchasers will be asked to produce identification documentation at a later stage and we would ask for your co-operation in order that there will be no delay in agreeing the sale. 2. These particulars do not constitute part or all of an offer or contract. 3. The measurements indicated are supplied for guidance only and as such must be considered incorrect. Potential buyers are advised to recheck measurements before committing to any expense. 4. We have not tested any apparatus, equipment, fixtures, fittings or services and it is in the buyers interest to check the working condition of any appliances.

Connells Residential is registered in England and Wales under company number 1489613, Registered Office is Cumbria House, 16-20 Hockliffe Street, Leighton Buzzard, Bedfordshire, LU7 1GN. VAT Registration Number is 500 2481 05.

See all our properties at www.connells.co.uk | www.rightmove.co.uk | www.zoopla.co.uk

Property Ref: BAN309581 - 0003