



Connells

Wychwood Bloxham Road
Banbury

Wychwood Bloxham Road Banbury OX16 9UN

for sale from
£565,000



Property Description

Welcome to The Wychwood, a beautifully designed five-bedroom detached home offering spacious and versatile accommodation across three floors. Perfectly positioned in the thriving Wykham Park development on the edge of Banbury, this home is ideal for growing families or those seeking extra space to work from home.

The ground floor features a bright front-aspect living room, a stylish open-plan kitchen/dining area with integrated appliances, and French doors opening onto the rear garden. A utility room and cloakroom complete the ground floor.

On the first floor, you'll find four well-proportioned bedrooms, including a second bedroom with en suite, and a modern family bathroom. The top floor is dedicated to the master suite, boasting a private en suite, walk-in wardrobe, and generous storage – a peaceful retreat from the rest of the home.

Outside, the property benefits from a private garden, garage, and driveway parking.

Wykham Park is a thoughtfully planned new community on the edge of Banbury, offering future amenities including a school, community centre, and green spaces. With easy access to the M40, Banbury train station, and nearby towns like Oxford and Stratford-upon-Avon, this location is ideal for commuters and families alike.

Entrance Hall

Living Room

10' 5" x 14' 1" (3.17m x 4.29m)

Dining Room

10' 8" x 11' 6" (3.25m x 3.51m)

Kitchen

9' 8" x 11' 6" (2.95m x 3.51m)

Utility Room

Hallway

Cupboard

Cloakroom

Low level wc; wash hand basin

Stairs Leading To First Floor

Bedroom Two

12' 11" x 10' 2" (3.94m x 3.10m)

Ensuite

Bedroom Three

9' 11" x 8' 2" (3.02m x 2.49m)

Bedroom Four

10' 1" x 8' 2" (3.07m x 2.49m)

Bedroom Five

7' 2" x 11' 5" (2.18m x 3.48m)

Bathroom

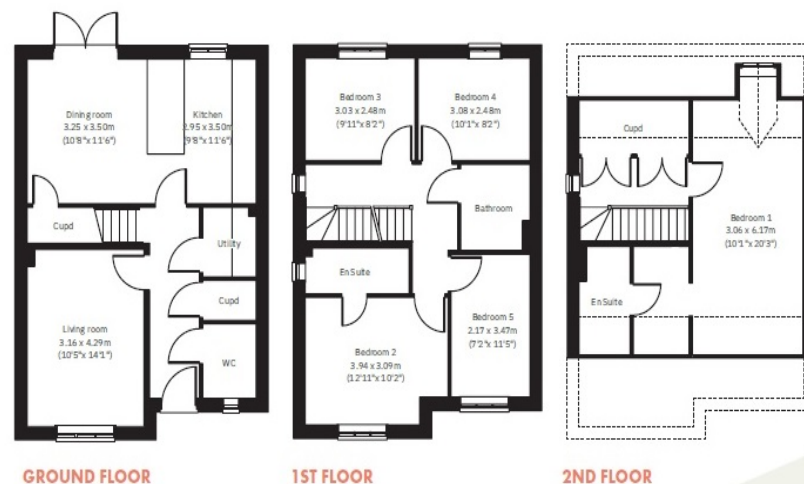
Stairs Leading To Second Floor

Bedroom One

10' 1" x 20' 3" (3.07m x 6.17m)

Ensuite





To view this property please contact Connells on

T 01295 268 101
E banbury@connells.co.uk

33 Bridge Street
 BANBURY OX16 5PN

EPC Rating:
 Exempt

view this property online connells.co.uk/Property/BAN309530

Tenure: Freehold



1. MONEY LAUNDERING REGULATIONS Intending purchasers will be asked to produce identification documentation at a later stage and we would ask for your co-operation in order that there will be no delay in agreeing the sale. 2. These particulars do not constitute part or all of an offer or contract. 3. The measurements indicated are supplied for guidance only and as such must be considered incorrect. Potential buyers are advised to recheck measurements before committing to any expense. 4. We have not tested any apparatus, equipment, fixtures, fittings or services and it is in the buyers interest to check the working condition of any appliances.

Connells Residential is registered in England and Wales under company number 1489613, Registered Office is Cumbria House, 16-20 Hockliffe Street, Leighton Buzzard, Bedfordshire, LU7 1GN. VAT Registration Number is 500 2481 05.

See all our properties at www.connells.co.uk | www.rightmove.co.uk | www.zoopla.co.uk

Property Ref: BAN309530 - 0002