



Wyke

Connells

Himbleton Bloxham Road
Banbury

Himbleton Bloxham Road Banbury OX16 9UN

for sale from
£480,000



Property Description

Plot 202 - The Himbleton

Welcome to The Himbleton, a beautifully designed four-bedroom detached home nestled in the sought-after Wykham Park development on Bloxham Road, Banbury. Perfectly tailored for modern family living, this spacious and energy-efficient property offers a harmonious blend of comfort, style, and practicality.

Wykham Park is a thoughtfully planned new community on the edge of Banbury, offering future amenities including a school, community centre, and green spaces. With easy access to the M40, Banbury train station, and nearby towns like Oxford and Stratford-upon-Avon, this location is ideal for commuters and families alike.

Plot 202 - The Himbleton

Welcome to The Himbleton, a beautifully designed four-bedroom detached home nestled in the sought-after Wykham Park development on Bloxham Road, Banbury. Perfectly tailored for modern family living, this spacious and energy-efficient property offers a harmonious blend of comfort, style, and practicality.

Wykham Park is a thoughtfully planned new community on the edge of Banbury, offering future amenities including a school, community centre, and green spaces. With easy access to the M40, Banbury train station, and nearby towns like Oxford and Stratford-upon-Avon, this location is ideal for commuters and families alike.

Plot 202 - The Himbleton

Welcome to The Himbleton, a beautifully designed four-bedroom detached home nestled in the sought-after Wykham Park development on Bloxham Road, Banbury. Perfectly tailored for modern family living, this spacious and energy-efficient property offers a harmonious blend of comfort, style, and practicality.

Wykham Park is a thoughtfully planned new community on the edge of Banbury, offering future amenities including a school, community centre, and green spaces. With easy access to the M40, Banbury train station, and nearby towns like Oxford and Stratford-upon-Avon, this location is ideal for commuters and families alike.

Plot 202 - The Himbleton

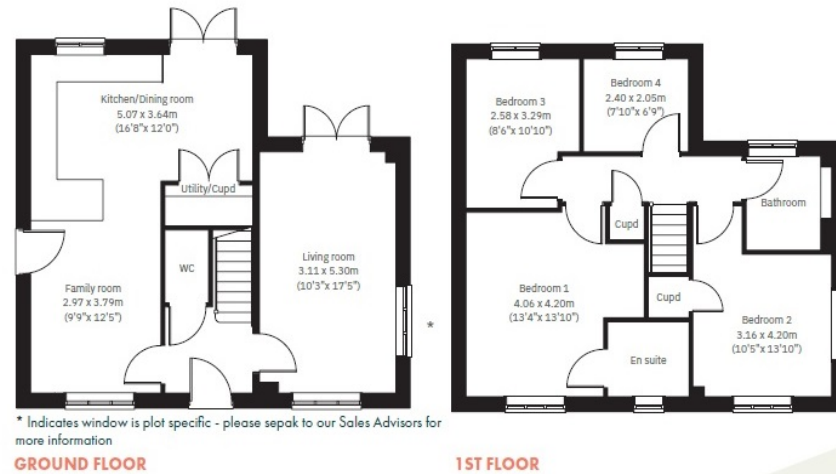
Welcome to The Himbleton, a beautifully designed four-bedroom detached home nestled in the sought-after Wykham Park development on Bloxham Road, Banbury. Perfectly tailored for modern family living, this spacious and energy-efficient property offers a harmonious blend of comfort, style, and practicality.

Wykham Park is a thoughtfully planned new community on the edge of Banbury, offering future amenities including a school, community centre, and green spaces. With easy access to the M40, Banbury train station, and nearby towns like Oxford and Stratford-upon-Avon, this location is ideal for commuters and families alike.









To view this property please contact Connells on

T 01295 268 101
E banbury@connells.co.uk

33 Bridge Street
 BANBURY OX16 5PN

EPC Rating:
 Exempt

view this property online [connells.co.uk/Property/BAN309533](https://www.connells.co.uk/Property/BAN309533)

Tenure: Freehold



1. MONEY LAUNDERING REGULATIONS Intending purchasers will be asked to produce identification documentation at a later stage and we would ask for your co-operation in order that there will be no delay in agreeing the sale. 2. These particulars do not constitute part or all of an offer or contract. 3. The measurements indicated are supplied for guidance only and as such must be considered incorrect. Potential buyers are advised to recheck measurements before committing to any expense. 4. We have not tested any apparatus, equipment, fixtures, fittings or services and it is in the buyers interest to check the working condition of any appliances.

Connells Residential is registered in England and Wales under company number 1489613, Registered Office is Cumbria House, 16-20 Hockliffe Street, Leighton Buzzard, Bedfordshire, LU7 1GN. VAT Registration Number is 500 2481 05.

See all our properties at www.connells.co.uk | www.rightmove.co.uk | www.zoopla.co.uk

Property Ref: BAN309533 - 0002