





Property Description

A three bedroom end of terrace property which boasts a large rear garden. The accommodation includes a lounge, kitchen, three bedrooms, bathroom, separate WC, garage and parking. The property also has gas central heating and double glazing.

Entrance Porch

Double glazed sliding patio doors, timber and glazed door into the entrance hall.

Entrance Hall

Door to lounge, stairs rising to the first floor.

Lounge/Dining Room

18' 6" x 10' 5" (5.64m x 3.17m)

Double glazed window to the front aspect, patio doors into the rear garden room, gas fire with stone surround,

Kitchen/Dining Room

13' 6" x 12' 9" (4.11m x 3.89m)

Double glazed window to the side and rear aspect. Fitted with a range of wall and base level storage units with work surface over incorporating a stainless steel sink and drainer, space and plumbing for washing machine, space for fridge, two storage cupboards, one housing boiler. space for cooker, radiator.

Garden Room

23' x 6' (7.01m x 1.83m)

Timber and glazed construction, door to side aspect, radiator.

First Floor

Landing

Double glazed window to the side aspect, gas wall mounted heater, doors to bedrooms and bathroom.

Bedroom One

14' 1" x 9' 5" (4.29m x 2.87m)

Double glazed window to rear aspect, radiator.

Bedroom Two

11' 9" x 8' 4" (3.58m x 2.54m)

Double glazed window to the rear aspect, built in cupboard, radiator.

Bedroom Three

9' 5" x 6' 1" (2.87m x 1.85m)

Double glazed window to the front aspect, built in cupboard, radiator.

Bathroom

Double glazed window to the rear aspect, vanity wash hand basin, enclosed panel bath, radiator.

Seperate Wc

Double glazed window to the rear aspect,
Low level WC

Outside

Front Garden

Mainly laid to lawn with flower and shrub
borders, path to front door.

Rear Garden

Mainly laid to lawn with flower and shrub
borders, path leading to rear.

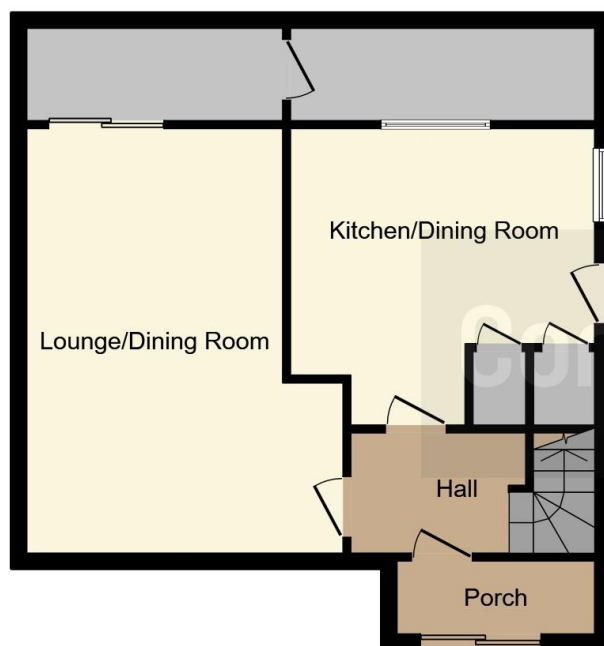
Garage

A prefabricated garage with up and over door,
personal door into garden.









Ground Floor



First Floor

This floor plan is for illustrative purposes only. It is not drawn to scale. Any measurements, floor areas (including any total floor area), openings and orientation are approximate. No details are guaranteed, they cannot be relied upon for any purpose and they do not form part of any agreement. No liability is taken for any error, omission or misstatement. A party must rely upon its own inspection(s). Powered by www.focalagent.com

To view this property please contact Connells on

T 01295 268 101
E banbury@connells.co.uk

33 Bridge Street
 BANBURY OX16 5PN

EPC Rating: Awaited

Tenure: Freehold

view this property online connells.co.uk/Property/BAN309385



1. MONEY LAUNDERING REGULATIONS Intending purchasers will be asked to produce identification documentation at a later stage and we would ask for your co-operation in order that there will be no delay in agreeing the sale. 2. These particulars do not constitute part or all of an offer or contract. 3. The measurements indicated are supplied for guidance only and as such must be considered incorrect. Potential buyers are advised to recheck measurements before committing to any expense. 4. We have not tested any apparatus, equipment, fixtures, fittings or services and it is in the buyers interest to check the working condition of any appliances.

Connells Residential is registered in England and Wales under company number 1489613, Registered Office is Cumbria House, 16-20 Hockliffe Street, Leighton Buzzard, Bedfordshire, LU7 1GN. VAT Registration Number is 500 2481 05.

See all our properties at www.connells.co.uk | www.rightmove.co.uk | www.zoopla.co.uk

Property Ref: BAN309385 - 0003