



Connells

Bailey Road
BANBURY



Property Description

Connells Estate Agents are delighted to present this spacious and well presented four bedroom semi detached home located within the sought after Banbury Rise development.

Accommodation comprises; entrance hall, spacious lounge, generous sized kitchen diner leading to a utility room and cloakroom.

On the first floor; two spacious double bedrooms, en suite to master bedroom and a family bathroom.

On the second floor; two further double bedrooms and a family bathroom.

Entrance Hall

Wall mounted radiator.

Lounge

17' 8" x 11' 9" (5.38m x 3.58m)

TV point. Double glazed window to the front aspect. Wall mounted radiator.

Kitchen

15' 11" x 15' 4" (4.85m x 4.67m)

Wall and base units. Worksurfaces. Gas hobs with hood over. Oven. Space for fridge freezer. Space for dishwasher. Sink and drainer unit. Door leading to rear garden.

Utility Room

4' 8" x 5' 8" (1.42m x 1.73m)

Worksurfaces. Wall united. Space for washing machine and tumble dryer.

Cloakroom

Low Level WC and wash hand basin. Wall mounted radiator.

First Floor Landing

Storage cupboard.

Bedroom One

10' 5" x 9' 9" (3.17m x 2.97m)

Double glazed window to the front aspect. Built in wardrobes. Television point. Wall mounted radiator.

Ensuite

Double glazed to front aspect. Low level WC and wash hand basin. Shower cubicle. Wall mounted radiator.

Bedroom Four

9' 8" x 8' 1" (2.95m x 2.46m)

Double glazed window to the rear aspect. Wall mounted radiator.

Bathroom

Low level WC and wash hand basin. Bath with shower over. Airing cupboard. Double

glazed window to rear aspect.

Second Floor

Bedroom Two

11' 5" x 9' 7" (3.48m x 2.92m)

Double glazed window to the rear aspect.
Wall mounted radiator.

Bedroom Three

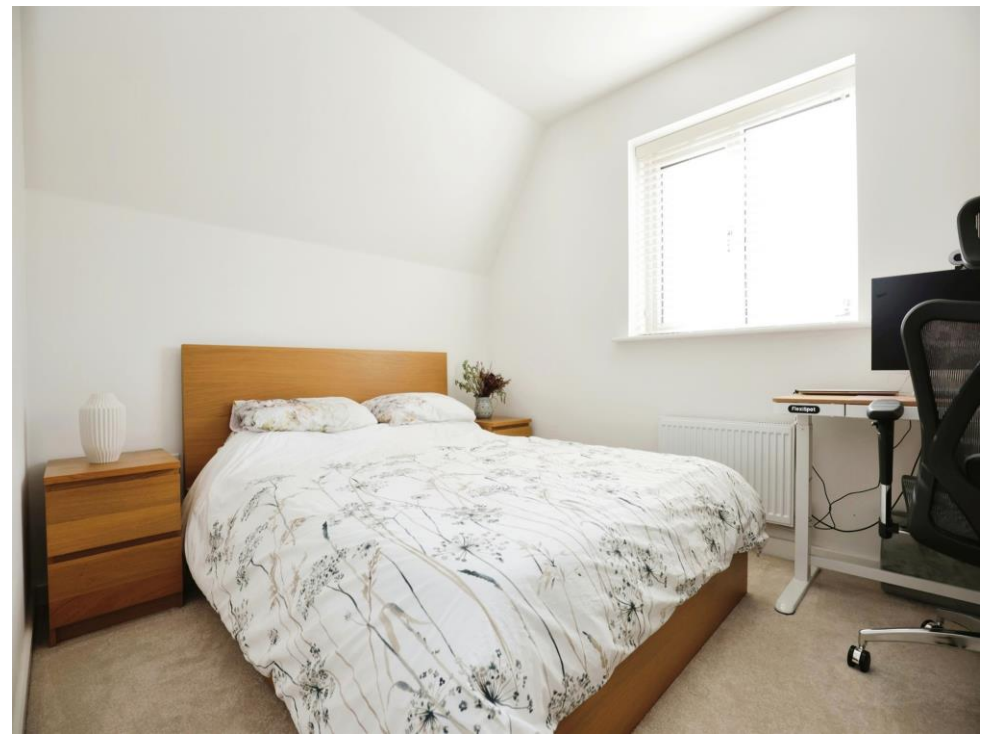
10' 4" x 11' 6" (3.15m x 3.51m)

Double glazed window to the front aspect.
Wall mounted radiator.

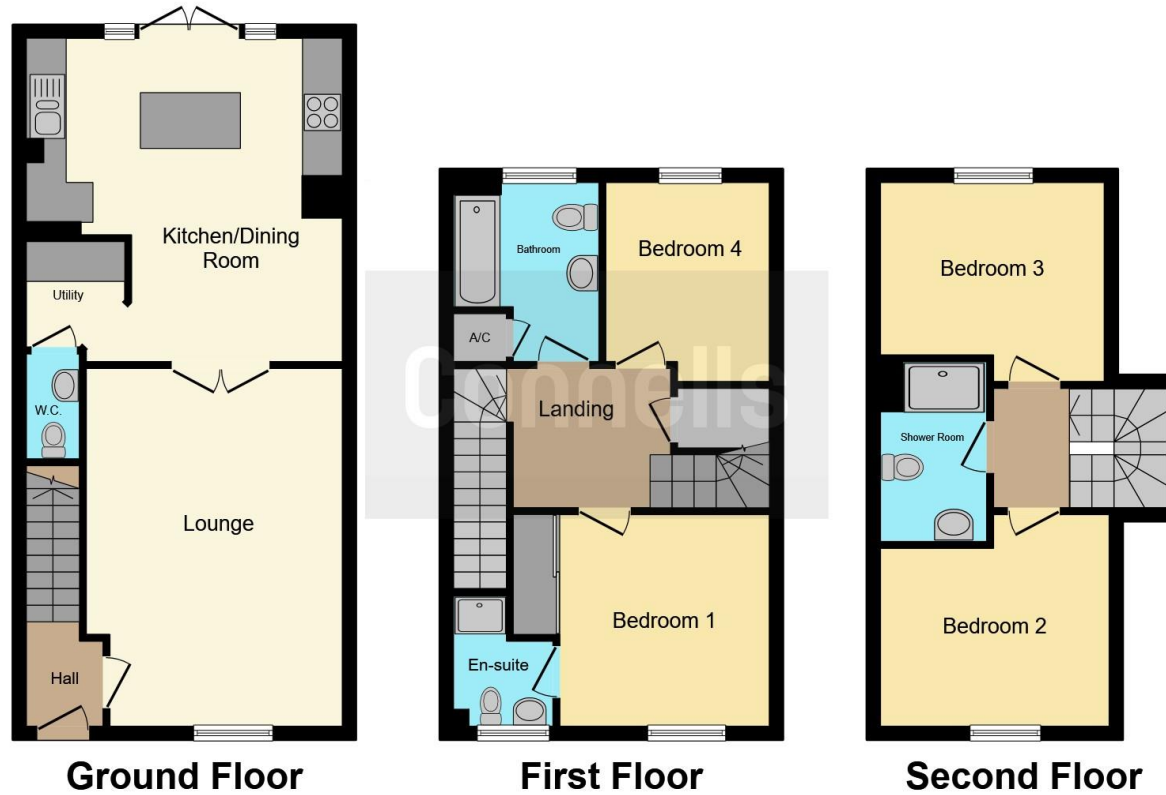
Bathroom

Shower cubicle. Low level WC and wash hand basin. Extractor fan. Wall mounted radiator.









This floor plan is for illustrative purposes only. It is not drawn to scale. Any measurements, floor areas (including any total floor area), openings and orientation are approximate. No details are guaranteed, they cannot be relied upon for any purpose and they do not form part of any agreement. No liability is taken for any error, omission or misstatement. A party must rely upon its own inspection(s). Powered by www.focalagent.com

To view this property please contact Connells on

T 01295 268 101
E banbury@connells.co.uk

33 Bridge Street
 BANBURY OX16 5PN

EPC Rating: B

Tenure: Freehold

view this property online connells.co.uk/Property/BAN309036



1. MONEY LAUNDERING REGULATIONS Intending purchasers will be asked to produce identification documentation at a later stage and we would ask for your co-operation in order that there will be no delay in agreeing the sale. 2. These particulars do not constitute part or all of an offer or contract. 3. The measurements indicated are supplied for guidance only and as such must be considered incorrect. Potential buyers are advised to recheck measurements before committing to any expense. 4. We have not tested any apparatus, equipment, fixtures, fittings or services and it is in the buyers interest to check the working condition of any appliances.

Connells Residential is registered in England and Wales under company number 1489613, Registered Office is Cumbria House, 16-20 Hockliffe Street, Leighton Buzzard, Bedfordshire, LU7 1GN. VAT Registration Number is 500 2481 05.

See all our properties at www.connells.co.uk | www.rightmove.co.uk | www.zoopla.co.uk

Property Ref: BAN309036 - 0004