



Connells

Horton Close
Middleton Cheney Banbury



Property Description

A well presented three bedroom that has been modernised to a high standard with a timber office in the garden located in a cul-de-sac position in the popular and sought after village of Middleton Cheney.

Accommodation includes -: Entrance Porch, Large open plan Lounge/Dining and Kitchen area leading out to the rear garden. To the first floor we have three good size bedrooms and family bathroom.

Outside the driveway leads to the garage and the rear garden has a great timber office/studio, great patio area with a cover then mainly laid to lawn.

Entrance Porch

8' 9" x 9' 7" (2.67m x 2.92m)

Good size leading through to open plan Lounge/Diner/Kitchen areas

Lounge/Dining Room

22' 1" x 11' 11" (6.73m x 3.63m)

Double glazed windows to both front and rear aspects plus stairs rising to the first floor landing.

Kitchen

9' 5" x 7' 5" (2.87m x 2.26m)

The kitchen is at the rear of the house with a newly fitted range of cabinets and appliances, an understairs cupboard, double glazed window to the rear aspect and double glazed door to the rear garden.

First Floor

10' 8" x 7' 6" (3.25m x 2.29m)

Bedroom One

10' 2" x 11' 1" (3.10m x 3.38m)

Double glazed window to the rear aspect, radiator.

Bedroom Two

10' 2" x 9' 10" (3.10m x 3.00m)

Double glazed window to the front aspect, radiator.

Bedroom Three

7' 6" x 8' 6" (2.29m x 2.59m)

Double glazed window to the rear aspect, radiator.

Bathroom

Double glazed window to the front aspect; Suite comprises of a paneled bath; wash hand basin; low level wc

Outside

Front Garden

Driveway to Garage and steps leading to front entrance door.

Rear Garden

The garden is west facing and enclosed by

timber fencing with a timber gate at the rear. It is laid mainly to lawn with flower and shrub borders plus a covered patio attached to the rear of the house. At the rear of the garden is a timber built home office which enjoys insulation to the floor and roof, a power supply with armoured power cable, windows and French doors.

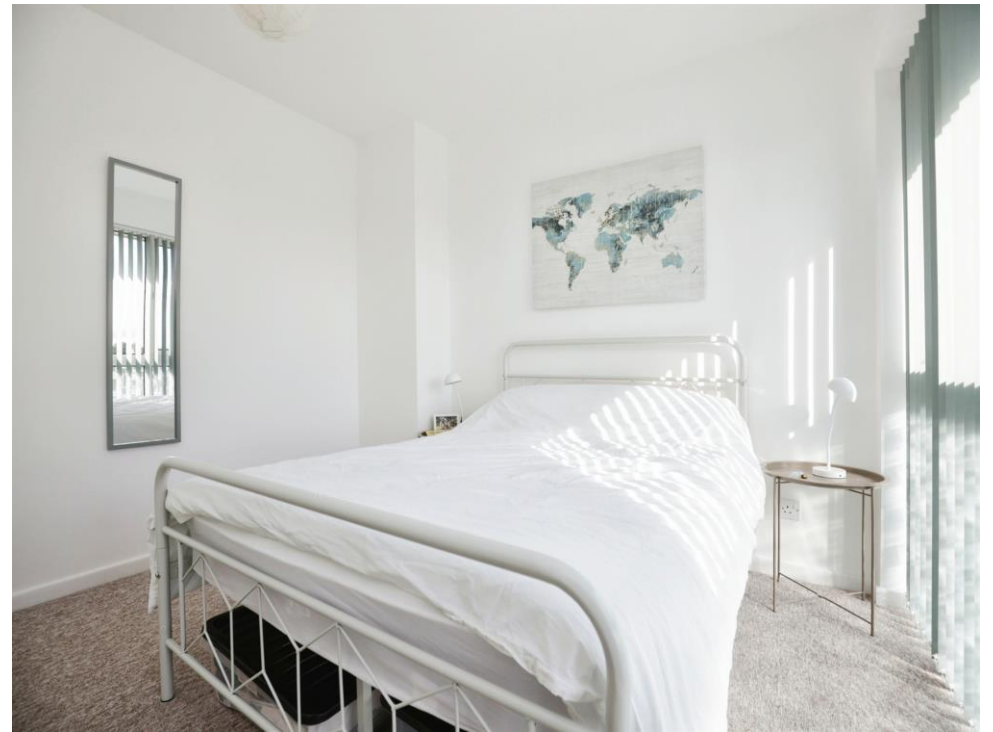
Middleton Cheney

Middleton Cheney has a set of parish meeting rooms, public library, sub-post office, veterinary surgery, pharmacy, supermarket and cookery school. The village has two 18th-century pubs: The Dolphin Inn and The New Inn, plus a sports and social club.

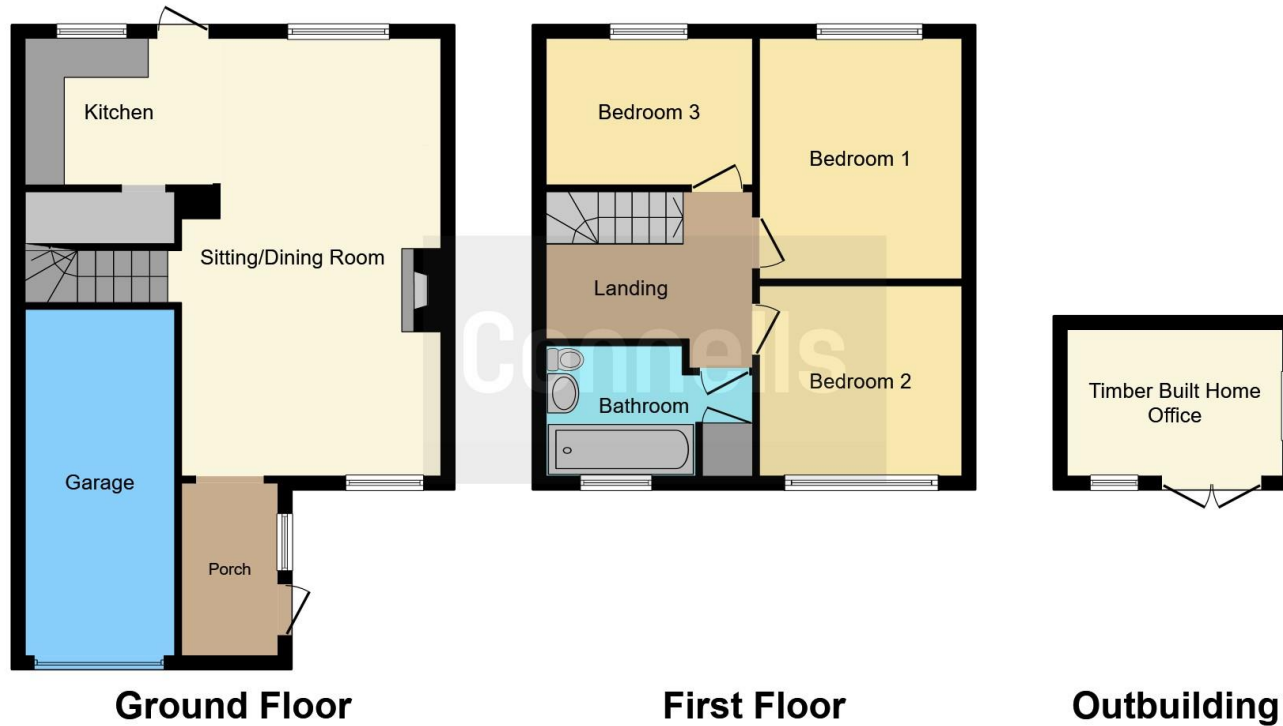
Middleton has a pre-school as well as Middleton Cheney Primary Academy, a primary school for children between the ages of 4 and 11. Chenderit School is a secondary school that includes a sixth form.

Middleton Cheney has a set of playing fields. The village has clubs for cricket, football, karate and tennis. The football club's home ground is in Astrop Road and the first team play in the Oxfordshire Senior Football League. It has a junior section that plays in the Witney and District Youth Football League.









This floor plan is for illustrative purposes only. It is not drawn to scale. Any measurements, floor areas (including any total floor area), openings and orientation are approximate. No details are guaranteed, they cannot be relied upon for any purpose and they do not form part of any agreement. No liability is taken for any error, omission or misstatement. A party must rely upon its own inspection(s). Powered by www.focalagent.com

To view this property please contact Connells on

T 01295 268 101
E banbury@connells.co.uk

33 Bridge Street
 BANBURY OX16 5PN

EPC Rating: C

view this property online connells.co.uk/Property/BAN309044

Tenure: Freehold



1. MONEY LAUNDERING REGULATIONS Intending purchasers will be asked to produce identification documentation at a later stage and we would ask for your co-operation in order that there will be no delay in agreeing the sale. 2. These particulars do not constitute part or all of an offer or contract. 3. The measurements indicated are supplied for guidance only and as such must be considered incorrect. Potential buyers are advised to recheck measurements before committing to any expense. 4. We have not tested any apparatus, equipment, fixtures, fittings or services and it is in the buyers interest to check the working condition of any appliances.

Connells Residential is registered in England and Wales under company number 1489613, Registered Office is Cumbria House, 16-20 Hockliffe Street, Leighton Buzzard, Bedfordshire, LU7 1GN. VAT Registration Number is 500 2481 05.

See all our properties at www.connells.co.uk | www.rightmove.co.uk | www.zoopla.co.uk

Property Ref: BAN309044 - 0003