



Connells

Bailey Road
Banbury



Property Description

Connells Estate Agents are delighted to present this spacious and immaculately presented four bedroom detached home situated within the sought after Banbury Rise development.

Accommodation comprises; entrance hall, generous sized lounge, spacious kitchen diner, study, utility room and cloakroom.

On the first floor; four bedrooms, en suite to master bedroom and family bathroom.

Outside; a stunning rear garden with seating area below a pergola. Additionally, there is a garage and off street parking.

Entrance Hall

Enter via front door to front aspect.

Lounge

16' 2" x 16' 1" (4.93m x 4.90m)

Double glazed window to side aspect. Wall mounted radiator. Television point.

Office

10' 4" x 6' 7" (3.15m x 2.01m)

Double glazed window to front aspect. Wall mounted radiator.

Kitchen Diner

26' 2" x 10' 4" (7.98m x 3.15m)

Double glazed window to side and rear aspect. Wall and base units. Worksurfaces. Induction hobs with hood over. Oven. Integrated fridge freezer. Television point. Door leading to rear garden.

Utility Room

7' x 5' 10" (2.13m x 1.78m)

Door leading to side access.

Cloakroom

Double glazed window to side aspect. Low level WC and wash hand basin.

First Floor

Storage cupboard.

Bedroom One

11' 3" x 10' 4" (3.43m x 3.15m)

Double glazed window to front aspect. Wall mounted radiator. Built in wardrobes.

Bedroom Two

11' 10" x 8' 3" (3.61m x 2.51m)

Double glazed window to front aspect. Wall mounted radiator. Built in wardrobes.

Bedroom Three

10' 8" x 6' 5" (3.25m x 1.96m)

Double glazed window to rear aspect. Wall mounted radiator.

Bedroom Four

10' 8" x 6' 11" (3.25m x 2.11m)

Double glazed window to rear aspect. Wall mounted radiator.

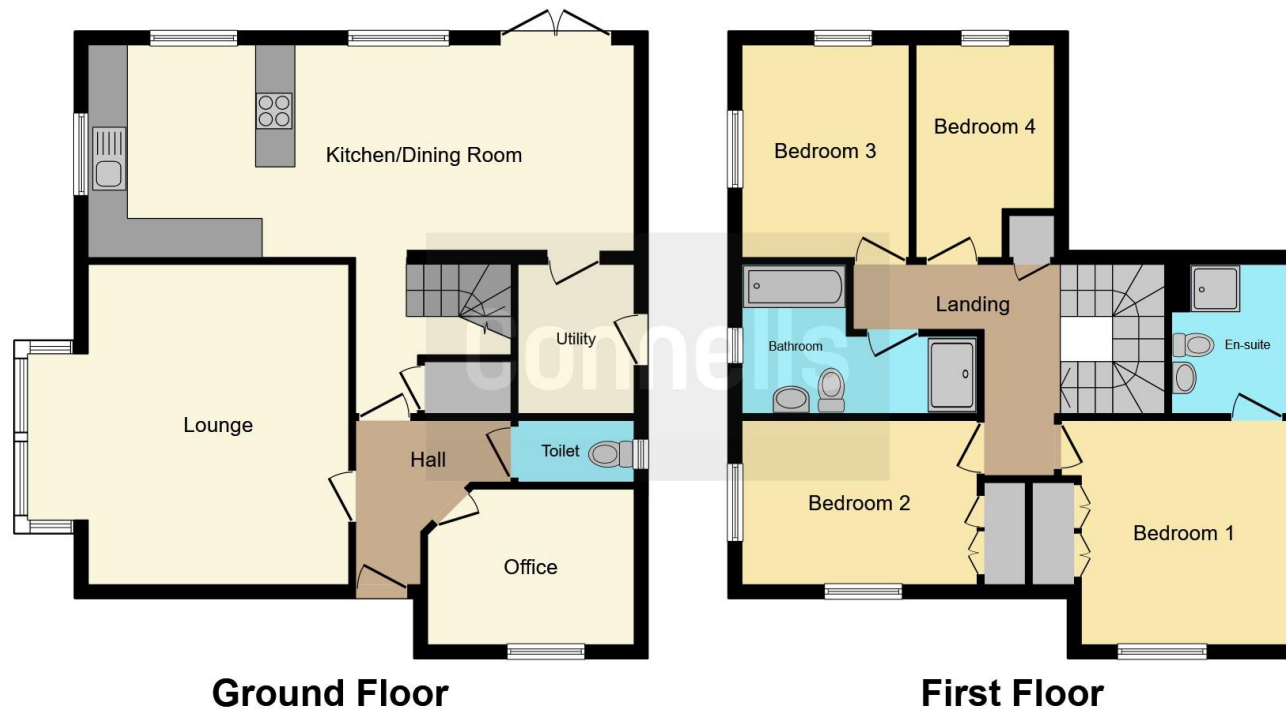
En Suite

Shower cubicle. Low level WC and wash hand basin. Wall mounted radiator. Extractor fan.









This floor plan is for illustrative purposes only. It is not drawn to scale. Any measurements, floor areas (including any total floor area), openings and orientation are approximate. No details are guaranteed, they cannot be relied upon for any purpose and they do not form part of any agreement. No liability is taken for any error, omission or misstatement. A party must rely upon its own inspection(s). Powered by www.focalagent.com

To view this property please contact Connells on

T 01295 268 101
E banbury@connells.co.uk

33 Bridge Street
 BANBURY OX16 5PN

EPC Rating: B

Tenure: Freehold

view this property online connells.co.uk/Property/BAN309020



1. MONEY LAUNDERING REGULATIONS Intending purchasers will be asked to produce identification documentation at a later stage and we would ask for your co-operation in order that there will be no delay in agreeing the sale. 2. These particulars do not constitute part or all of an offer or contract. 3. The measurements indicated are supplied for guidance only and as such must be considered incorrect. Potential buyers are advised to recheck measurements before committing to any expense. 4. We have not tested any apparatus, equipment, fixtures, fittings or services and it is in the buyers interest to check the working condition of any appliances.

Connells Residential is registered in England and Wales under company number 1489613, Registered Office is Cumbria House, 16-20 Hockliffe Street, Leighton Buzzard, Bedfordshire, LU7 1GN. VAT Registration Number is 500 2481 05.

See all our properties at www.connells.co.uk | www.rightmove.co.uk | www.zoopla.co.uk

Property Ref: BAN309020 - 0003