



Connells

North Street
Banbury



Property Description

Connells Estate Agents are delighted to present this spacious and unique two bedroom DETACHED home located within the popular location of Grimsbury. This home is conveniently situated for local amenities and transport links include Banbury Train Station, Banbury Town Centre and M40.

Accommodation comprises; generous sized lounge, dining room leading to a spacious kitchen with ample amounts of wall and base units. Additionally, there is a door leading to the garden.

On the first floor; two spacious bedrooms and a generous sized bathroom with a four piece suite.

Lounge

Enter via door to front aspect. Double glazed window to side aspect. Television point. Wall mounted radiator. Electric fireplace.

Dining Room

7' 8" x 12' 3" (2.34m x 3.73m)

Double glazed window to rear aspect. Wall mounted radiator.

Kitchen

7' 8" x 12' 3" (2.34m x 3.73m)

Double glazed window to side aspect. Wall and base units. Worksurfaces. Space for washing machine and fridge freezer. Gas cooker with hood over. Sink and drainer unit.

Door leading to garden.

First Floor

Bedroom One

15' 9" x 11' 1" (4.80m x 3.38m)

Double glazed window to front aspect. Wall mounted radiator.

Bedroom Two

7' 8" x 12' 9" (2.34m x 3.89m)

Double glazed window to side aspect. Wall mounted radiator.

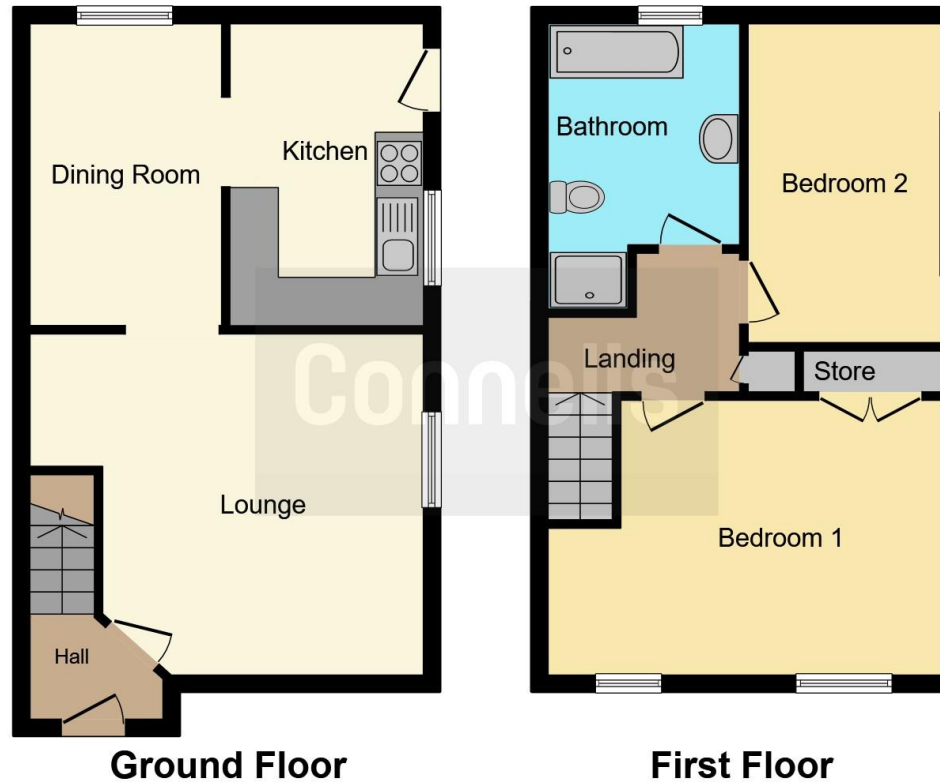
Bathroom

Low level WC and wash hand basin. Bath. Shower cubicle. Wall mounted radiator. Double glazed window to rear aspect.









This floor plan is for illustrative purposes only. It is not drawn to scale. Any measurements, floor areas (including any total floor area), openings and orientation are approximate. No details are guaranteed, they cannot be relied upon for any purpose and they do not form part of any agreement. No liability is taken for any error, omission or misstatement. A party must rely upon its own inspection(s). Powered by www.focalagent.com

To view this property please contact Connells on

T 01295 268 101
E banbury@connells.co.uk

33 Bridge Street
 BANBURY OX16 5PN

EPC Rating: D

view this property online connells.co.uk/Property/BAN308853

Tenure: Freehold



1. MONEY LAUNDERING REGULATIONS Intending purchasers will be asked to produce identification documentation at a later stage and we would ask for your co-operation in order that there will be no delay in agreeing the sale. 2. These particulars do not constitute part or all of an offer or contract. 3. The measurements indicated are supplied for guidance only and as such must be considered incorrect. Potential buyers are advised to recheck measurements before committing to any expense. 4. We have not tested any apparatus, equipment, fixtures, fittings or services and it is in the buyers interest to check the working condition of any appliances.

Connells Residential is registered in England and Wales under company number 1489613, Registered Office is Cumbria House, 16-20 Hockliffe Street, Leighton Buzzard, Bedfordshire, LU7 1GN. VAT Registration Number is 500 2481 05.

See all our properties at www.connells.co.uk | www.rightmove.co.uk | www.zoopla.co.uk

Property Ref: BAN308853 - 0006