



Connells

Crawley Road
WITNEY



Property Description

This is a wonderful opportunity to purchase an exceptional house designed by an architect. Bathed in natural light, stunning views and open spaces, this house is not to be missed.

With 3 bedrooms and large living spaces, there are ample options to reconfigure the layout and arrange it to suit your own preferences. Once purchased, many finishes are left for you to decide, giving you the opportunity to fit your preferred internal finishes, landscape the garden and truly make this exceptional house yours.

Built in the last few years with high levels of insulation, underfloor heating, wood burners and a recently installed new boiler the energy efficiency of this house is very good.

The open plan nature of this house, with the views extending over the fields, beats any feeling of lockdown as it's a joy to be at home.

There is an exciting wild flower roof and an artist painted mural which speaks to the quality and joyfulness of this house and its wonderful setting in Witney.

There is planning permission for a carport and under room which can be further developed to improve the infrastructure and standing of this property.



Room Measurements

Entrance Hall

10' 3" x 7' 10" (3.12m x 2.39m)

Dining Room

10' 4" max x 10' 4" (3.15m max x 3.15m)

Kitchen

10' 4" max x 10' (3.15m max x 3.05m)

Bedroom One

22' 7" x 12' (6.88m x 3.66m)

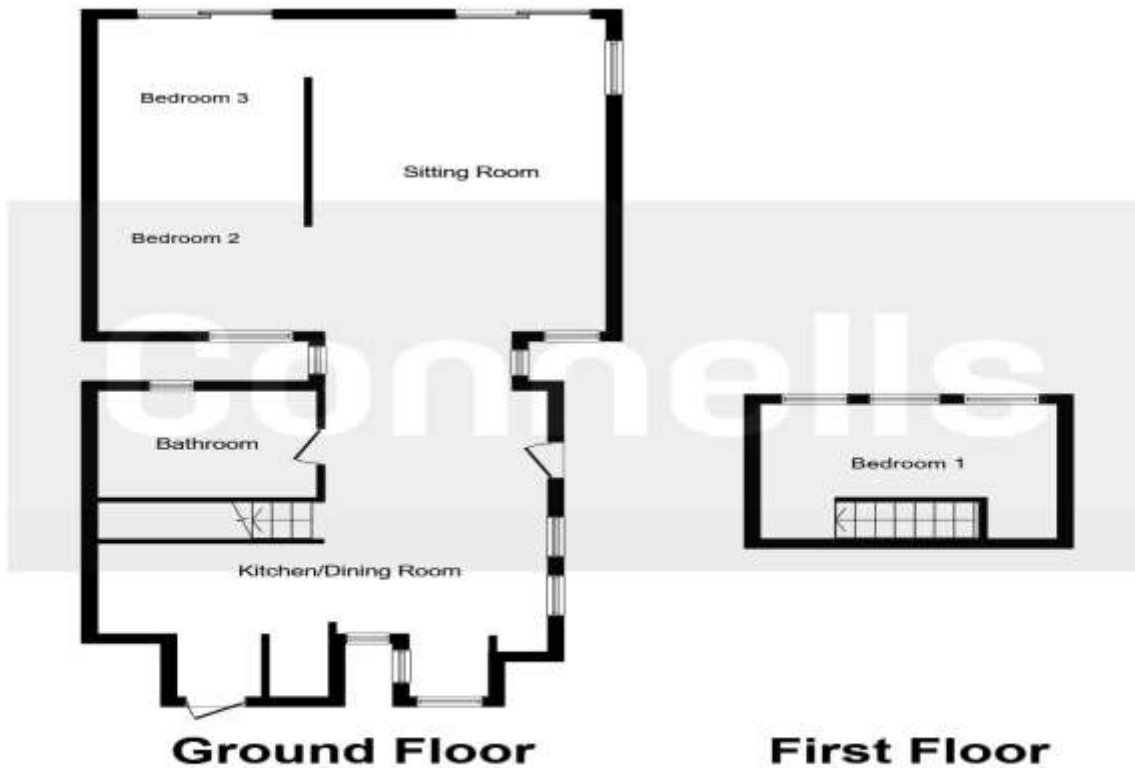
Bedroom Two

8' 10" x 12' 7" (2.69m x 3.84m)

Bedroom Three

8' 10" x 10' (2.69m x 3.05m)





This floor plan is for illustrative purposes only. It is not drawn to scale. Any measurements, floor areas (including any total floor area), openings and orientation are approximate. No details are guaranteed, they cannot be relied upon for any purpose and they do not form part of any agreement. No liability is taken for any error, omission or misstatement. A party must rely upon its own inspection(s). Plan produced for Connells. Powered by www.focalagent.com



To view this property please contact Connells on

T 01993 778 281
E witney@connells.co.uk

13 Corn Street
 WITNEY OX28 6DB

EPC Rating: E

view this property online connells.co.uk/Property/ref-WNY304402

Tenure: Freehold



1. MONEY LAUNDERING REGULATIONS Intending purchasers will be asked to produce identification documentation at a later stage and we would ask for your co-operation in order that there will be no delay in agreeing the sale. 2. These particulars do not constitute part or all of an offer or contract. 3. The measurements indicated are supplied for guidance only and as such must be considered incorrect. Potential buyers are advised to recheck measurements before committing to any expense. 4. We have not tested any apparatus, equipment, fixtures, fittings or services and it is in the buyers interest to check the working condition of any appliances.

See all our properties at www.connells.co.uk | www.rightmove.co.uk | www.zoopla.co.uk

Property Ref: WNY304402 - 0004