



Connells

Shipton Road
WOODSTOCK



Property Description

Spread over two floors, the house is set back from the road and offers generous provisions of off-street parking. On the ground floor there is an entrance hall, sitting room on the left featuring a fireplace for those cosy evenings in, there is an additional reception/dining room complete with wood burning stove, each space seamlessly connect, offering a wonderful sense of flow from one room to the next, a downstairs WC and a modern fitted kitchen which features plenty of storage space and room for appliances complete the accommodation downstairs.

As you walk upstairs you will find three bedrooms and a refitted modern three-piece shower room.

Externally, there is secure driveway parking to the front and to the rear a well-maintained courtyard style garden that is laid to block paving and a bike store/storage shed.

Woodstock is an attractive Georgian market town, home to Blenheim Palace, one of Britain's finest world heritage sites. The town has a wonderful community and offers a wide selection of hotels, restaurants, cafes, pubs, and shops. There is a tennis and bowling club, an open-air swimming pool, museum, churches, and a multitude of annual events. There is a Pre-school and Primary school with adjoining Nursery. Woodstock offers ease of access to Oxford with a regular bus service. There are nearby train services to London from Long Hanborough and Oxford Parkway.

Kitchen

8' 9" x 12' 5" (2.67m x 3.78m)

Dining Room

16' 9" x 13' 6" (5.11m x 4.11m)

Lounge

14' 1" x 10' 2" (4.29m x 3.10m)

Downstairs W.C

Bedroom One

8' 7" x 11' 1" (2.62m x 3.38m)

Bedroom Two

8' 9" x 10' 5" (2.67m x 3.17m)

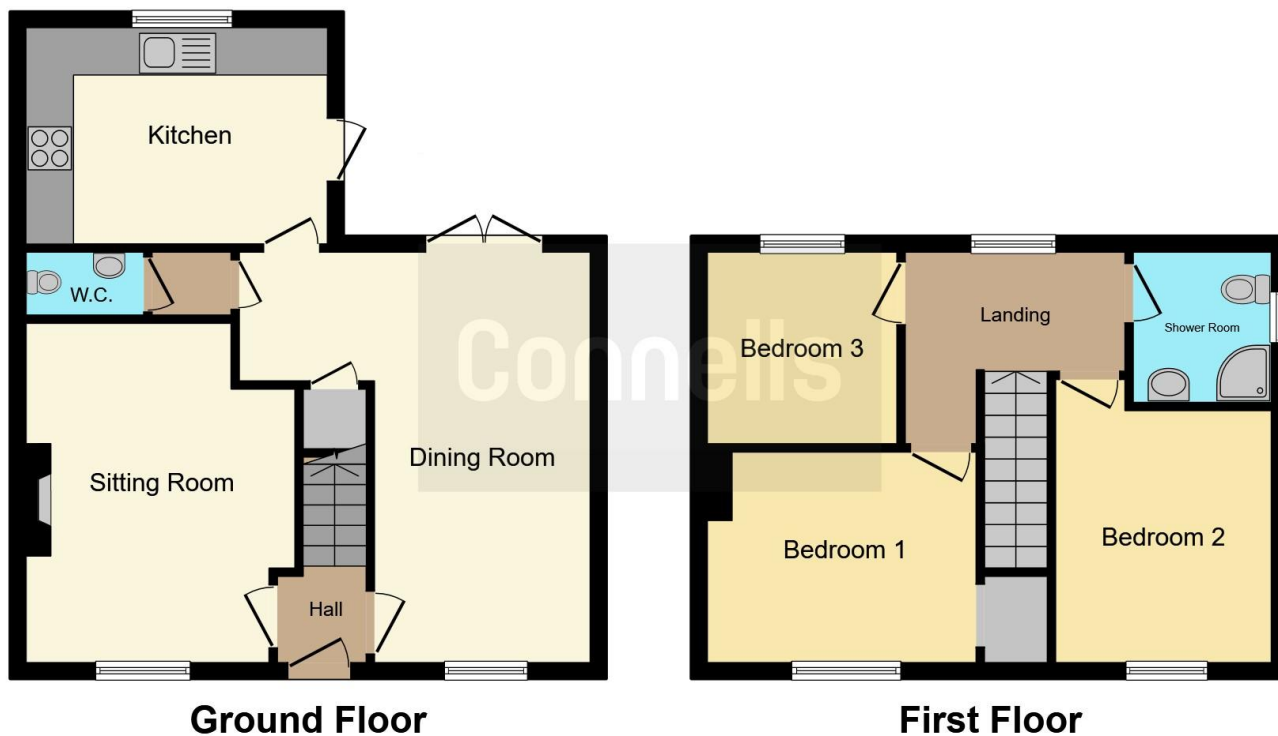
Bedroom Three

7' 9" x 7' 8" (2.36m x 2.34m)

Shower Room

6' 5" x 5' 9" (1.96m x 1.75m)





This floor plan is for illustrative purposes only. It is not drawn to scale. Any measurements, floor areas (including any total floor area), openings and orientation are approximate. No details are guaranteed, they cannot be relied upon for any purpose and they do not form part of any agreement. No liability is taken for any error, omission or misstatement. A party must rely upon its own inspection(s). Powered by www.focalagent.com

To view this property please contact Connells on

T 01993 778 281
E witney@connells.co.uk

13 Corn Street
 WITNEY OX28 6DB

EPC Rating: D Council Tax
 Band: C

view this property online connells.co.uk/Property/WNY305786



Tenure: Freehold



1. MONEY LAUNDERING REGULATIONS Intending purchasers will be asked to produce identification documentation at a later stage and we would ask for your co-operation in order that there will be no delay in agreeing the sale. 2. These particulars do not constitute part or all of an offer or contract. 3. The measurements indicated are supplied for guidance only and as such must be considered incorrect. Potential buyers are advised to recheck measurements before committing to any expense. 4. We have not tested any apparatus, equipment, fixtures, fittings or services and it is in the buyers interest to check the working condition of any appliances.

Connells Residential is registered in England and Wales under company number 1489613, Registered Office is Cumbria House, 16-20 Hockliffe Street, Leighton Buzzard, Bedfordshire, LU7 1GN. VAT Registration Number is 500 2481 05.

See all our properties at www.connells.co.uk | www.rightmove.co.uk | www.zoopla.co.uk

Property Ref: WNY305786 - 0005